

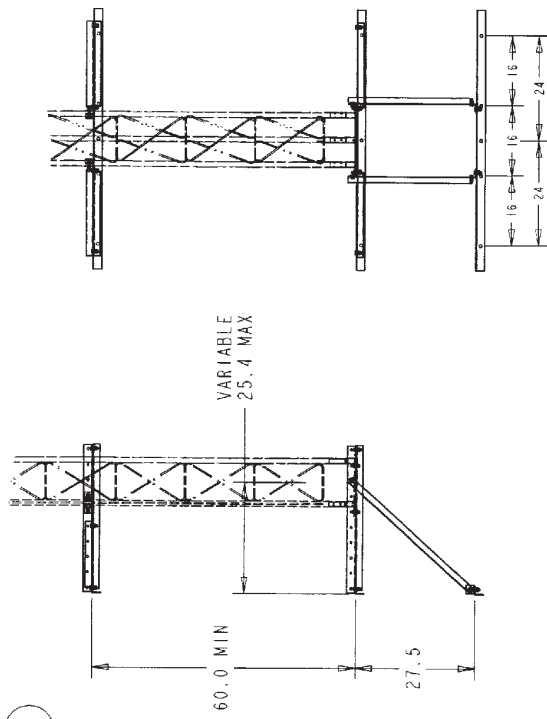
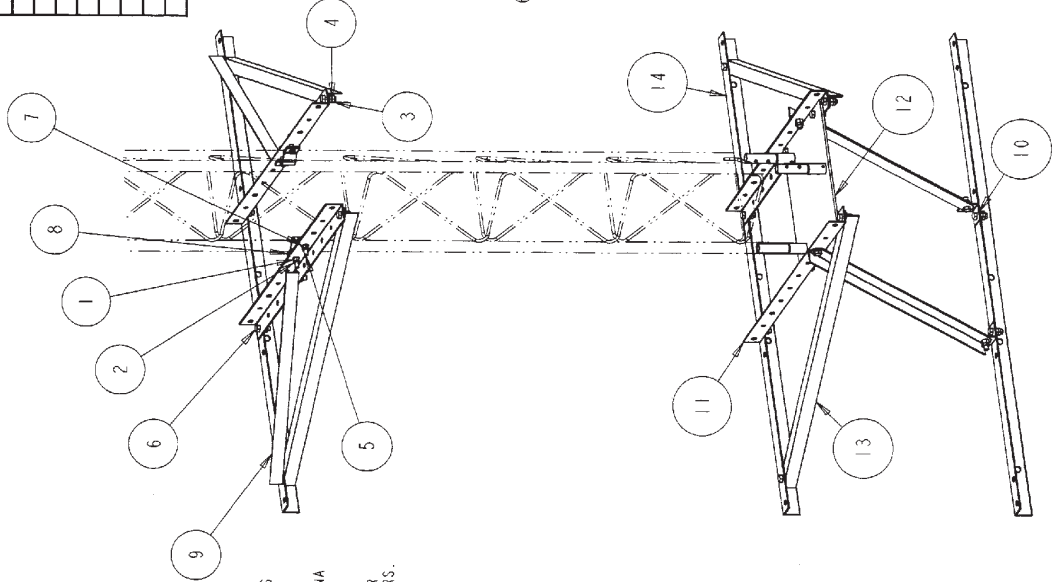


BILL OF MATERIALS

ITEM	QTY	PART NO	DESCRIPTION	DWG NO
1	4	230005	NUT 3/8 HVY HEX HDG	PURCHASED
2	4	230007	NUT 3/8 PAL HDG	PURCHASED
3	24	230011	NUT 1/2 PAL HDG	PURCHASED
4	24	240085	NUT 1/2 HEX HDG	PURCHASED
5	4	210096	BOLT 3/8 x 2 HCS G5 G0G	PURCHASED
6	24	2100176	BOLT 1/2 x 1-1/4 HSB A325 HDG	PURCHASED
7	5	2500086	WASHER 3/8 SAE FLAT HDG	PURCHASED
8	2	D114	CLAMP SADDLE 0.25" x 3.5" C TO C HDG	B170214
9	2	HB20100	ANGLE 24" x 7/4" x 1.5" x 0.125"	A990167
10	2	KH6772	ANGLE 2" x 2" x 0.13"	A990130
11	4	KH6773	ANGLE HOUSE BRKT 33.5" x 2" x 0.13"	B990916
12	1	KH6775	BASE PLATE FOR 25G WALL MOUNT	C990120
13	6	KY1201	ANGLE HOUSE BRKT 38.25" x 1.5" x 0.13"	B850392
14	3	KY1205	ANGLE HOUSE BRKT 59.5" x 2" x 0.13"	C850325

IMPORTANT INSTALLATION NOTES FOR THE 25G WALL MOUNT STRUCTURE

- IT IS THE PURCHASERS RESPONSIBILITY TO VERIFY THAT HIS INSTALLATION AND BUILDING STRUCTURE ARE ABLE TO WITHSTAND ALL LOADS IMPOSED BY HIS ANTENNA SYSTEM AND MOUNT.
- ANTENNA INSTALLATION SHOULD BE GROUNDED BY THE INSTALLER TO MEET ALL APPLICABLE CODES.
- PAL NUTS ARE INCLUDED WITH THE BOLT ASSEMBLIES AND ARE TO BE INSTALLED WITH THE CONCAVE SURFACE AGAINST THE NUT.
- ALL PARTS ARE HOT DIP GALVANIZED AFTER FABRICATION.
- ALL SEALANT, IF REQUIRED, TO BE SUPPLIED BY OTHERS.
- LOCAL ZONING AND OR BUILDING CODES AND INSURANCE COMPANIES MAY REQUIRE AN ARCHITECT OR STRUCTURAL ENGINEER APPROVAL PRIOR TO INSTALLATION.
- INSPECT MOUNT AND ANTENNA INSTALLATION EVERY 6 MONTHS OR AFTER EVERY STORM FOR TIGHTNESS.
- REFER TO ROHN DRAWING #A871302R1 FOR ALLOWABLE ANTENNA AND TOWER HEIGHT.
- HOLES PROVIDED IN MOUNTING ANGLES ARE 11/16" DIAMETER FOR USE WITH HDG 5/8" THREADED ROD, PROVIDED BY OTHERS.



DESCRIPTION  
25G WALL MOUNT  
PART NUMBER 25GWM

THIS DRAWING IS THE PROPERTY OF ROHN. IT IS NOT TO BE COPIED, TRACED, OR REPRODUCED IN ANY FORM WITHOUT OUR WRITTEN CONSENT.

ALL DIMENSIONS ARE GIVEN IN INCHES. TOLERANCES ARE AS GIVEN BELOW UNLESS NOTED OTHERWISE.  
ANGLES: 30.083° ANGLES: 32°

DATE: 1/20/99  
DRAWN BY: DJL  
CHECKED BY: [Signature]  
SCALE: 0.05  
SITE: [Blank]  
PART NO: [Blank]  
WEIGHT: [Blank]  
C: 25GWM  
C990121 0