



**TORQUE ARM BILL OF MATERIALS**

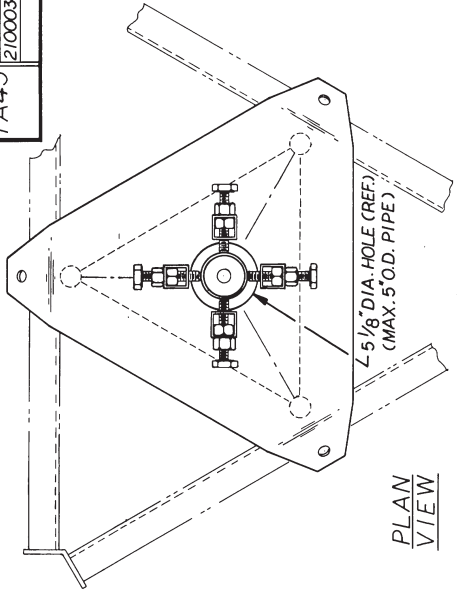
ASSY NO.	PART NO.	QUAN	DESCRIPTION	DRAWING NO.
TA45	TA45	1	TORQUE ARM	B760796
	210016GA	3 (REF)	7/16 X 2-1/2" BOLT ASSEMBLY	C770404
	2100036A	3 (REF)	5/16 X 2-3/8" BOLT ASSEMBLY	C770404

**DISH MOUNT BILL OF MATERIALS**

ASSY NO.	PART NO.	QUAN	DESCRIPTION	DRAWING NO.		
45TDM253KD	KH11617	1	MTG. PIPE 2" STD. X 7'-0" LG.	B770160		
	KY11181	1	TOP MOUNTING PLATE	C850312		
	KY11176	1	BOTTOM MOUNTING PLATE	C850325		
	JR66A	3	U-BOLT ASSEMBLY	B651028		
	2200496	8	5/8 X 4" BOLT (FULLY THREADED)	C770404		
	210016GA	3	7/16 X 2-1/2" BOLT ASSEMBLY	C770404		
	230018	16	5/8" HVY. HEX. NUT	N/A		
	2100036A	3	5/16 X 2-3/8" BOLT ASSEMBLY	C770404		
	45TDM2553KD	KH2582	1	MTG. PIPE 2-1/2" STD. X 7'-0" LG.	B770160	
		KY11181	1	TOP MOUNTING PLATE	C850312	
		KY11176	1	BOTTOM MOUNTING PLATE	C850325	
		JR66A	3	U-BOLT ASSEMBLY	B651028	
		2200496	8	5/8 X 4" BOLT (FULLY THREADED)	C770404	
		210016GA	3	7/16 X 2-1/2" BOLT ASSEMBLY	C770404	
		230018	16	5/8" HVY. HEX. NUT	N/A	
		2100036A	3	5/16 X 2-3/8" BOLT ASSEMBLY	C770404	
45TDM33KD		KH2583	1	MTG. PIPE 3" STD. X 7'-0" LG.	B770160	
		KY11181	1	TOP MOUNTING PLATE	C850312	
		KY11176	1	BOTTOM MOUNTING PLATE	C850325	
		JR66A	3	U-BOLT ASSEMBLY	B651028	
		2200496	8	5/8 X 4" BOLT (FULLY THREADED)	C770404	
		210016GA	3	7/16 X 2-1/2" BOLT ASSEMBLY	C770404	
		230018	16	5/8" HVY. HEX. NUT	N/A	
		2100036A	3	5/16 X 2-3/8" BOLT ASSEMBLY	C770404	
	45TDM353KD	KH2584	1	MTG. PIPE 3-1/2" STD. X 7'-0" LG.	B770160	
		KY11181	1	TOP MOUNTING PLATE	C850312	
		KY11176	1	BOTTOM MOUNTING PLATE	C850325	
		JR66A	3	U-BOLT ASSEMBLY	B651028	
		2200496	8	5/8 X 4" BOLT (FULLY THREADED)	C770404	
		210016GA	3	7/16 X 2-1/2" BOLT ASSEMBLY	C770404	
		230018	16	5/8" HVY. HEX. NUT	N/A	
		2100036A	3	5/16 X 2-3/8" BOLT ASSEMBLY	C770404	
45TDM433KD		KY11181	1	TOP MOUNTING PLATE	C850312	
		KY11176	1	BOTTOM MOUNTING PLATE	C850325	
		JR66A	3	U-BOLT ASSEMBLY	B651028	
		2200496	8	5/8 X 4" BOLT (FULLY THREADED)	C770404	
		210016GA	3	7/16 X 2-1/2" BOLT ASSEMBLY	C770404	
		230018	16	5/8" HVY. HEX. NUT	N/A	
		2100036A	3	5/16 X 2-3/8" BOLT ASSEMBLY	C770404	
		45TDM453KD	KY11181	1	TOP MOUNTING PLATE	C850312
	KY11176		1	BOTTOM MOUNTING PLATE	C850325	
	JR66A		3	U-BOLT ASSEMBLY	B651028	
	2200496		8	5/8 X 4" BOLT (FULLY THREADED)	C770404	
	210016GA		3	7/16 X 2-1/2" BOLT ASSEMBLY	C770404	
	230018		16	5/8" HVY. HEX. NUT	N/A	
	2100036A		3	5/16 X 2-3/8" BOLT ASSEMBLY	C770404	
	45TDM453KD		KH2653	1	MTG. PIPE 4" STD. X 7'-0" LG.	B770160

**DESIGN NOTE**

THESE TOP DISH MOUNT ASSEMBLIES ARE DESIGNED TO BE MOUNTED ON 45G SINGLE BRACED SECTIONS ONLY.



**GENERAL NOTES**

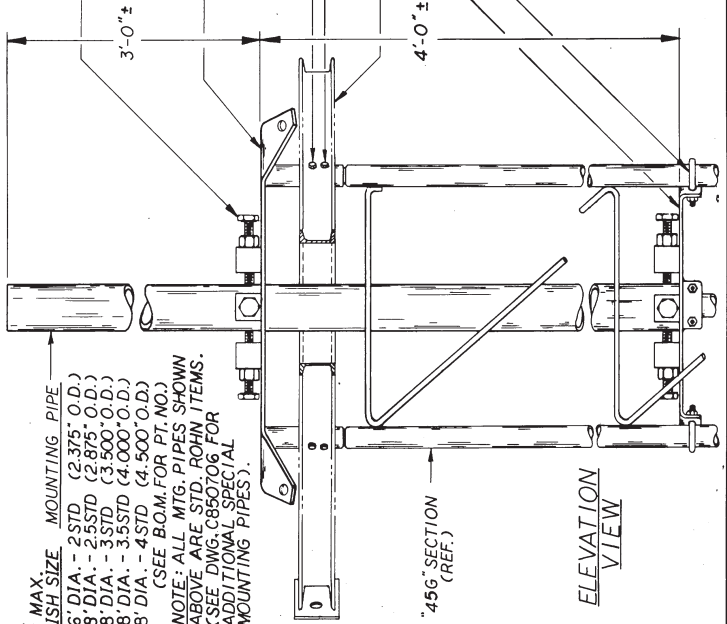
1. THE TOP DISH MOUNTS AND THE TORQUE ARMS ARE SEPARATE UNITS, AND MAY BE USED IN CONJUNCTION WITH EACH OTHER, AS SHOWN, OR AS SEPARATE UNITS. THE TORQUE ARM MAY BE INSTALLED AT THE LEVEL OF ANY TOWER JOINT. WHEN THE TORQUE ARM IS INSTALLED AS SHOWN, THE GUYS ARE TO BE ATTACHED TO THE TORQUE ARM ONLY. ALL FABRICATION DRAWINGS REFERENCED, ARE FOR SHOP USE ONLY.
2. PAL NUTS, ARE PROVIDED WITH ALL U-BOLT AND BOLT ASSEMBLIES.

**\* DESIGN NOTE**

THIS ANTENNA MOUNT IS DESIGNED IN ACCORDANCE WITH A.N.S.I. A58.1 "MIN. DESIGN LOADS FOR BUILDINGS & OTHER STRUCTURES. EXPOSURE B, 70 MPH. WIND AT A MAX. 8' DIA. SOLID, GRID OR MESH DISH (MAX. PROJ. AREA = 60 SQ. FT.)

\* MAX. DISH SIZE, MOUNTING PIPE  
 6' DIA. - 2 STD (2.375" O.D.)  
 8' DIA. - 2 STD (2.875" O.D.)  
 8' DIA. - 3 STD (3.500" O.D.)  
 8' DIA. - 3.5 STD (4.000" O.D.)  
 8' DIA. - 4 STD (4.500" O.D.)  
 (SEE BOM FOR PT. NO.)

NOTE: ALL MTG. PIPES SHOWN ABOVE ARE STD. ROHN ITEMS. (SEE DWG. C850706 FOR ADDITIONAL SPECIAL MOUNTING PIPES).



PT. NO.	QUAN	DESCRIPTION	DWG. NO.
KY11181	1	TOP MOUNTING PLATE	C850312
KY11176	1	BOTTOM MOUNTING PLATE	C850325
JR66A	3	U-BOLT ASSEMBLY	B651028
2200496	8	5/8 X 4" BOLT (FULLY THREADED)	C770404
210016GA	3	7/16 X 2-1/2" BOLT ASSEMBLY	C770404
230018	16	5/8" HVY. HEX. NUT	N/A
2100036A	3	5/16 X 2-3/8" BOLT ASSEMBLY	C770404

**RI ADDED 45TDM453KD & REV'D BOLTS 4-24-85 GPW**

No. Revision Description Date By

**UNR-Rohn**  
 Division of UNR, Inc.

**MOUNT DISH ASSY TOP 45G, KD**  
**TOP DISH MOUNT & TORQUE ARM**  
**ASSY FOR TOWER MODEL NO. 45G**

Scale NONE  
 Tolerances Decimals Fractions Angles  
 Drawn by GPW 01-14-85  
 Checked by WML 1-18-85  
 Approved by Engineering Date  
 Approved by Production Date  
 Approved by Sales Date

Unless otherwise specified, dimensions are given in inches.

This drawing is the property of UNR-Rohn. It is not to be reproduced or traced in whole or in part without our written consent.

File Number  
 Drawing Number

**C850315 R1**