



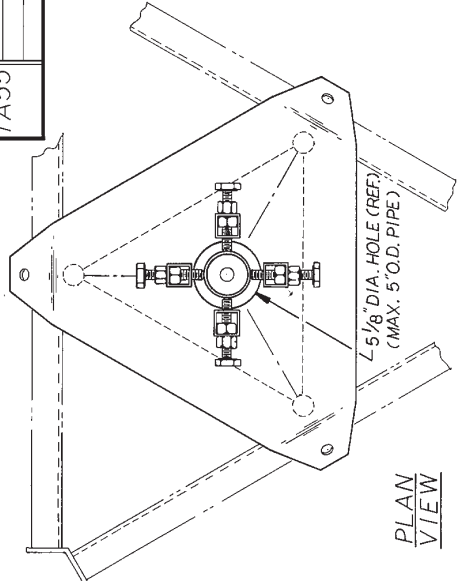
**TORQUE ARM BILL OF MATERIALS**

ASSY NO.	PART NO.	QUAN	DESCRIPTION	DRAWING NO.
TA55	TA55	1	TORQUE ARM	B760797
	210016GA.6 (REF)		7/16 X 2-1/2" BOLT ASSEMBLY	C770404

**DISH MOUNT BILL OF MATERIALS**

ASSY NO.	PART NO.	QUAN	DESCRIPTION	DRAWING NO.	
55TDM253KD	KH1617	1	MTG. PIPE 2" STD. X 7'-0" LG.	B770160	
	KY1182	1	TOP MOUNTING PLATE	C850312	
	KY1176	1	BOTTOM MOUNTING PLATE	C850325	
	JR65A	3	U-BOLT ASSEMBLY	B651028	
	2200496	8	5/8 X 4" BOLT (FULLY THREADED)	C770404	
	210016GA	6	7/16 X 2-1/2" BOLT ASSEMBLY	C770404	
	230018	16	5/8" HVY. HEX. NUT	N/A	
	55TDM253KD	KH2582	1	MTG. PIPE 2-1/2" STD. X 7'-0" LG.	B770160
		KY1182	1	TOP MOUNTING PLATE	C850312
		KY1176	1	BOTTOM MOUNTING PLATE	C850325
JR65A		3	U-BOLT ASSEMBLY	B651028	
2200496		8	5/8 X 4" BOLT (FULLY THREADED)	C770404	
210016GA		6	7/16 X 2-1/2" BOLT ASSEMBLY	C770404	
230018		16	5/8" HVY. HEX. NUT	N/A	
55TDM353KD		KH2583	1	MTG. PIPE 3" STD. X 7'-0" LG.	B770160
		KY1182	1	TOP MOUNTING PLATE	C850312
		KY1176	1	BOTTOM MOUNTING PLATE	C850325
	JR65A	3	U-BOLT ASSEMBLY	B651028	
	2200496	8	5/8 X 4" BOLT (FULLY THREADED)	C770404	
	210016GA	6	7/16 X 2-1/2" BOLT ASSEMBLY	C770404	
	230018	16	5/8" HVY. HEX. NUT	N/A	
	55TDM453KD	KH2584	1	MTG. PIPE 3-1/2" STD. X 7'-0" LG.	B770160
		KY1182	1	TOP MOUNTING PLATE	C850312
		KY1176	1	BOTTOM MOUNTING PLATE	C850325
JR65A		3	U-BOLT ASSEMBLY	B651028	
2200496		8	5/8 X 4" BOLT (FULLY THREADED)	C770404	
210016GA		6	7/16 X 2-1/2" BOLT ASSEMBLY	C770404	
230018		16	5/8" HVY. HEX. NUT	N/A	
55TDM453KD		KY1182	1	TOP MOUNTING PLATE	C850312
		KY1176	1	BOTTOM MOUNTING PLATE	C850325
		JR65A	3	U-BOLT ASSEMBLY	B651028
	2200496	8	5/8 X 4" BOLT (FULLY THREADED)	C770404	
	210016GA	6	7/16 X 2-1/2" BOLT ASSEMBLY	C770404	
	230018	16	5/8" HVY. HEX. NUT	N/A	
	55TDM453KD	KH2653	1	MTG. PIPE 4" STD. X 7'-0" LG.	B770160

**DESIGN NOTE**  
THESE TOP DISH MOUNT ASSEMBLIES ARE DESIGNED TO BE MOUNTED ON 55G SINGLE BRACED SECTIONS ONLY.



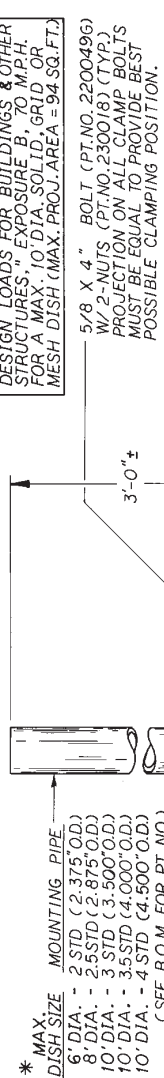
PLAN VIEW

**GENERAL NOTES**

- THE TOP DISH MOUNTS AND THE TORQUE ARMS ARE SEPARATE UNITS, AND MAY BE USED IN CONJUNCTION WITH EACH OTHER, AS SHOWN OR AS SEPARATE UNITS. THE TORQUE ARM MAY BE INSTALLED AT THE LEVEL OF ANY TOWER JOINT, WHEN THE TORQUE ARM IS INSTALLED AS SHOWN. THE GUYS ARE TO BE ATTACHED TO THE TORQUE ARM ONLY. ALL FABRICATION DRAWINGS REFERENCED, ARE FOR SHOP USE ONLY.
- PAL NUTS ARE PROVIDED WITH ALL U-BOLT AND BOLT ASSEMBLIES.

**\* DESIGN NOTE**

THIS ANTENNA MOUNT IS DESIGNED IN ACCORDANCE WITH ANS1 A58.1 "MIN. DESIGN LOADS FOR BUILDINGS & OTHER STRUCTURES," EXPOSURE B, TO MPH. FOR A MAX. 10' DIA. SOLID, GRID OR MESH DISH (MAX. PROJ. AREA = 94 SQ. FT.)



ELEVATION VIEW

NOTE: ALL MTG. PIPES SHOWN ABOVE ARE STD.-ROHN ITEMS. (SEE DWG. C850706 FOR ADDITIONAL SPECIAL MOUNTING PIPES).

PT. NO.	QUAN.	DESCRIPTION	DWG. NO.
KY1182	1	TOP MOUNTING PLATE	C850312
KY1176	1	BOTTOM MOUNTING PLATE	C850325
JR65A	3	U-BOLT ASSEMBLY	B651028
2200496	8	5/8 X 4" BOLT (FULLY THREADED)	C770404
210016GA	6	7/16 X 2-1/2" BOLT ASSEMBLY	C770404
230018	16	5/8 HVY. HEX. NUT	N/A

**UNR-Rohn**  
Division of UNR, Inc.

**MOUNT DISH ASSY TOP 55G RD**  
**TOP DISH MOUNT & TORQUE ARM ASSY FOR TOWER MODEL NO. 55G**

Scale: NONE  
Tolerances: Unless otherwise specified, dimensions are given in inches.  
Drawn by: GPW 01-14-85  
Checked by: JPH 01-14-85  
Approved by: JPH 01-14-85  
Approved by Production: JPH 01-14-85  
Approved by Sales: JPH 01-14-85

Revision Description: R1 ADDED 55TDM453KD & REV'D BOLTS 14-26-85 GPW

Drawing Number: C850316 R1