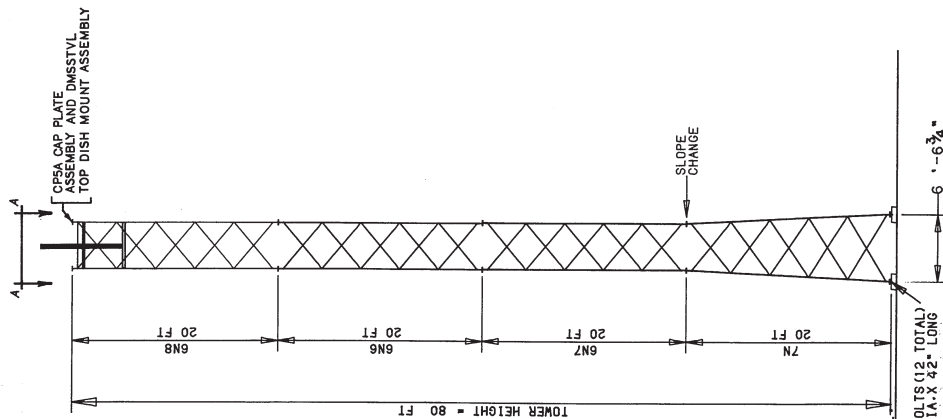




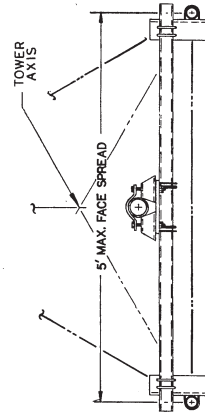
**NOTE: 60' (SS80TV6) TOWER ASSY SHOWN AS EXAMPLE. FOR DETAILS OF 20', 40' & 60' TOWERS SEE REF. TABLE IN UPPER RIGHT CORNER.**



TOWER DESIGN LOADING	
DESIGN WIND LOAD PER ANSI, A58.1-1962, IMPORTANCE SPEED (NO. 1) EXPOSURE B, 70 MPH BASIC WIND SPEED (NO. 1) (ICE)	50
THIS TOWER IS DESIGNED TO SUPPORT THE FOLLOWING LOADS:	
ELEVATION (FT)	PROJ. AREA (SF)
3'-6" ABOVE THE TOP MAX	48.9
ANTENNA TYPE	
6' DIA. TVRO DISH	

**REFERENCE DRAWINGS**  
 (DRAWINGS SUBMITTED ARE LATEST REVISIONS)

GROUTING AND DRAINAGE DETAIL-----SK720305  
 STEP BOLT DETAIL-----B651264  
 FOUNDATION DETAIL (BGKES)-----C731105  
 FOUNDATION & ANCHOR TOLERANCE-----AB10214  
 TVRO DISH MOUNT ASSY (DMSSTVL)-----B660279  
 ANCHOR BOLT TEMPLATE INSTALLATION-----CU730104  
 CAP PLATE ASSY (CPSA)-----B760739  
 BOLT ASSY INSTALLATION-----A790135  
 GENERAL FOUNDATION NOTES-----B641300



20' SSV TVRO TOWER ASSY	
SECTION ASSEMBLY DETAILS	
SECTION NUMBER	ASSEMBLY DRAWING
6N8	A780209
FOUNDATION DWG. NO.	DB 70480 (GN)

40' SSV TVRO TOWER ASSY	
SECTION ASSEMBLY DETAILS	
SECTION NUMBER	ASSEMBLY DRAWING
6N5T 7N	A780201
FOUNDATION DWG. NO.	DB70480

60' SSV TVRO TOWER ASSY	
SECTION ASSEMBLY DETAILS	
SECTION NUMBER	ASSEMBLY DRAWING
6N8 6N7 7N	A780209
FOUNDATION DWG. NO.	DB70480

80' SSV TVRO TOWER ASSY	
SECTION ASSEMBLY DETAILS	
SECTION NUMBER	ASSEMBLY DRAWING
6N8 6N7 6N6 6N5 6N4 6N3 6N2 6N1 7N	A780209
FOUNDATION DWG. NO.	DB70480

**GENERAL NOTES**

- SEE INDIVIDUAL SECTION ASSEMBLY DRAWINGS FOR PART NUMBERS AND SECTION ASSEMBLY DETAILS. FABRICATION DRAWINGS, IF REFERENCED, ARE FOR SHOP USE ONLY.
- ALL DIMENSIONS ARE PROVIDED ON ONE LEG ONLY FOR SECTIONS 1/2 THROUGH 16 AND ALL THREE LEGS FOR SECTIONS 17 THROUGH 79.
- ALL DIMENSIONS ARE PROVIDED FOR ALL TOWER AND ANCHOR BOLTS LEGS OF EACH SECTION.
- THE LEG PART NUMBER IS STAMPED AT THE BOTTOM OF EACH LEG OF EACH SECTION.
- TOWER DESIGN ASSUMES LEVEL GRADE AT TOWER SITE.
- TOWERS ARE GROUNDED PER E.T.A. STANDARDS TWO (2) TOWER LEGS PER SECTION ON BASE SECTIONS AND THREE (3) FOR 7N BASE AND LARGER.
- THE PURCHASER SHALL VERIFY THAT ACTUAL SITE SOIL PARAMETERS MEET OR EXCEED E.T.A. "NORMAL" SOIL PARAMETERS.
- DISH MOUNT PIPE IS TO BE ORDERED AS A SEPARATE ITEM. SEE APPROPRIATE DWG. NO. FOR ORDERING INFORMATION.

REVISED DRAWING	4-13-89	RJB	RK9
UNR-ROHN			
THIS DRAWING IS THE PROPERTY OF UNR-ROHN. IT IS NOT TO BE REPRODUCED, COPIED OR TRACED, IN WHOLE OR IN PART, WITHOUT OUR WRITTEN CONSENT.			
SELF-SUPPORTING TVRO TOWERS FOR 6' DIA. TVRO DISH			
SCALE 1" = 8'-0"	DATE	MATERIAL	FINISH WEIGHT
DRAWN BY: GJJ	12/27/85		
CHECKED BY: JPM	1-15-86	FILE NUMBER	
APPD. ENG: JS	1-31-86	DRAWING NUMBER	C851551 RI
APPD. SALES: JF	2-7-86		
APPD. PROD: JF			