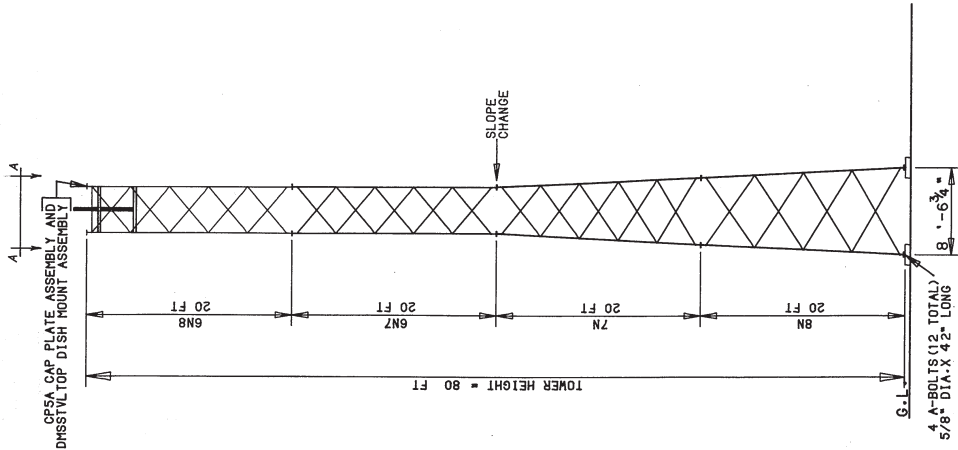




**NOTE:** 80' (SS80TV10) TOWER ASSY SHOWN AS EXAMPLE FOR DETAILS OF 20', 40' & 60' TOWERS SEE REF. TABLE IN UPPER RIGHT CORNER.



TOWER DESIGN LOADING	
DESIGN WIND LOAD PER ANSI ASS-1-1982, IMPORTANCE FACTOR $P_1 = 1.0$ , EXPOSURE B, 70 MPH BASIC WIND SPEED $V_B = 70$ MPH. THIS TOWER IS DESIGNED TO SUPPORT THE FOLLOWING LOADS:	
ELEV. - 10 FT	PROJ. AREA (SF)
ANTENNA TYPE	
8' DIA. TVRO DISH	87.0
3' ABOVE THE TOP MAX	

- REFERENCE DRAWINGS**  
DRAWINGS SUBMITTED ARE LATEST REVISIONS)
- GROUTING AND DRAINAGE DETAIL-----SK720305
  - STEP BOLT DETAIL-----B651264
  - GROUNDING DETAIL (BGKE5)-----C731105
  - TVRO DISH MOUNT ASSY (DMSSTVL)(2-JRB3AW4)-----BB60279
  - ANCHOR BOLT TEMPLATE INSTALLATION(GNABD)-----CU730104
  - CAP PLATE ASSY (CP5A)-----B760739
  - BOLT ASSY INSTALLATION-----B790139
  - GENERAL FOUNDATION NOTES-----BB41300

20' SSV TVRO TOWER ASSY		
ASSY NO.	SECTION ASSEMBLY DETAILS	
SS20TV10	DRAWING NUMBER	FOUNDATION DWG. NO.
	A780209	D670480 (6N)
40' SSV TVRO TOWER ASSY		
ASSY NO.	SECTION ASSEMBLY DETAILS	
SS40TV10	DRAWING NUMBER	FOUNDATION DWG. NO.
	A780201	D670480
60' SSV TVRO TOWER ASSY		
ASSY NO.	SECTION ASSEMBLY DETAILS	
SS60TV10	DRAWING NUMBER	FOUNDATION DWG. NO.
	A780208	D670480
80' SSV TVRO TOWER ASSY		
ASSY NO.	SECTION ASSEMBLY DETAILS	
SS80TV10	DRAWING NUMBER	FOUNDATION DWG. NO.
	A780209	D670480

**GENERAL NOTES**

1. SEE INDIVIDUAL SECTION ASSEMBLY DRAWINGS FOR PART NUMBERS AND SECTION ASSEMBLY DETAILS.
2. SHOP USE ONLY.
3. STEP BOLTS ARE PROVIDED ON ONE LEG ONLY FOR SECTIONS 6" THROUGH 11" AND ALL THREE LEGS FOR SECTIONS 12" THROUGH 15".
4. PAL NUTS ARE PROVIDED FOR ALL TOWER AND ANCHOR BOLTS (SEE DWG. A790135).
5. THE LEG PART NUMBER IS STAMPED AT THE BOTTOM OF EACH TOWER DESIGN ASSUMES LEVEL GRADE AT TOWER SITE.
6. TOWERS ARE GROUNDED PER E. I. A. STANDARDS TMD (2).
7. GROUNDING KITS ARE PROVIDED FOR 6N BASE SECTIONS AND THREE (3) FOR 7N BASE AND LARGER. ACTUAL SITE SOIL PARAMETERS MEET OR EXCEED E. I. A. "NORMAL" SOIL PARAMETERS. SITE IS TO BE ORDERED AS A SEPARATE ITEM. SEE APPROPRIATE DWG. NO. FOR ORDERING INFORMATION.

REVISED DWG.	4-13-89	PJB	RES./JS
UNR-ROHN			
THIS DRAWING IS THE PROPERTY OF UNR-ROHN. IT IS NOT TO BE REPRODUCED, COPIED OR TRACED, IN WHOLE OR IN PART, WITHOUT OUR WRITTEN CONSENT.			
SELF SUPPORTING TVRO TOWERS FOR 8' DIA. TVRO DISH			
SCALE 1" = 8'-0"	DATE	MATERIAL	FINISH
DRAWN BY: GLJ	1/6/86		
CHECKED BY: APJ	1-15-86	FILE NUMBER	
APPD. SALES: JS	2-31-86	DRAWING NUMBER	C860156 RI
APPD. PROD: JS	2-7-86		

