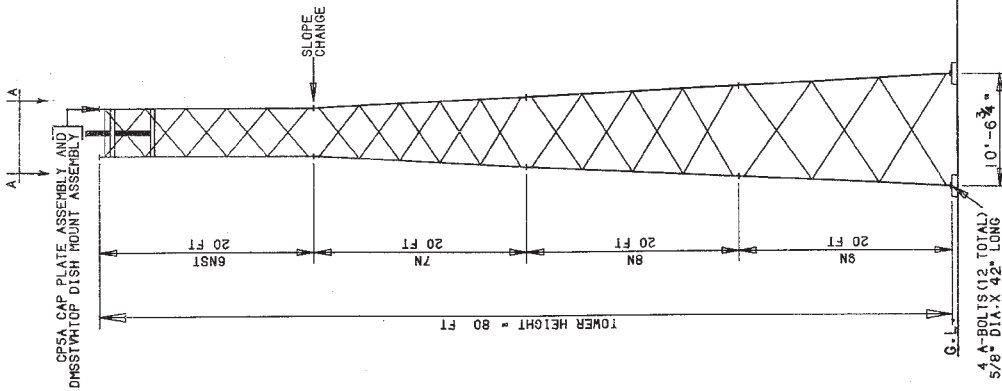




NOTE: 80' (SS80TV12) TOWER ASSY SHOWN AS EXAMPLE.
FOR DETAILS OF 20', 40' & 60' TOWERS SEE REF.
TABLE IN UPPER RIGHT CORNER.



TOWER DESIGN LOADING	
DESIGN WIND LOAD PER UNIT AREA (PSF) (BASE MOMENTANCE FACTOR (NO. ICE) EXPOSURE B, 70 MPH BASIC WIND SPEED (NO. ICE))	
THIS TOWER IS DESIGNED TO SUPPORT THE FOLLOWING LOADS:	
ELEVATION (FT)	PROJ. AREA (SF)
4' ABOVE THE TOP MAX	12' DIA. TVRO DISH
	195.7

REFERENCE DRAWINGS
(DRAWINGS SUBMITTED ARE LATEST REVISIONS)

- GROUNTING AND DRAINAGE DETAIL-----SK720305
- STEP BOLT DETAIL (BGKES)-----B651264
- FOUNDING DETAIL (BQKES)-----C731105
- FOUNDATION & ANCHOR TOLERANCE-----AB10214
- TVRO DISH MOUNT ASSY (DMSSTVL)(12-JRB3AW4)-----BB60279
- ANCHOR BOLT TEMPLATE INSTALLATION(GNABD)-----CUT30104
- CAP PLATE ASSY (CP5A)-----B760739
- BOLT ASSY INSTALLATION-----A790135
- GENERAL FOUNDATION NOTES-----BB41300

20' SSV TVRO TOWER ASSY	
SECTION ASSEMBLY DETAILS	
DRAWINGS SUBMITTED ARE LATEST REVISIONS	
SECTION NUMBER	FOUNDATION DWG. NO.
6N	D870480 (GN)
ASSEMBLY DRAWING	BASE SPREAD
AT80209	4'-6 3/4"

40' SSV TVRO TOWER ASSY	
SECTION ASSEMBLY DETAILS	
DRAWINGS SUBMITTED ARE LATEST REVISIONS	
SECTION NUMBER	FOUNDATION DWG. NO.
6N	D870480
ASSEMBLY DRAWING	BASE SPREAD
AT80201	6'-6 3/4"
AT80139	

60' SSV TVRO TOWER ASSY	
SECTION ASSEMBLY DETAILS	
DRAWINGS SUBMITTED ARE LATEST REVISIONS	
SECTION NUMBER	FOUNDATION DWG. NO.
6N	D870480
ASSEMBLY DRAWING	BASE SPREAD
AT80201	6'-6 3/4"
AT80139	
AT80252	

80' SSV TVRO TOWER ASSY	
SECTION ASSEMBLY DETAILS	
DRAWINGS SUBMITTED ARE LATEST REVISIONS	
SECTION NUMBER	FOUNDATION DWG. NO.
6N	D870480
ASSEMBLY DRAWING	BASE SPREAD
AT80201	10'-6 3/4"
AT80139	
AT80252	
AT80316	

GENERAL NOTES

1. SEE INDIVIDUAL SECTION ASSEMBLY DRAWINGS FOR PART DETAILS.
2. FABRICATION DRAWINGS, IF REFERENCED, ARE FOR SHOP USE ONLY.
3. STEP BOLTS ARE PROVIDED ON ONE LEG ONLY FOR SECTIONS 6 THROUGH 11, AND ALL THREE LEGS FOR SECTIONS 12 THROUGH 15.
4. PAL NUTS ARE PROVIDED FOR ALL TOWER AND ANCHOR BOLTS (SEE DWG. A790135).
5. THE LEG PART NUMBER IS STAMPED AT THE BOTTOM OF EACH TOWER DESIGN SECTION.
6. TOWER DESIGN SECTIONS LEVEL GRADE AT TOWER SITE.
7. TOWERS ARE GROUNDED PER E.I.A. STANDARDS, TMO (2) THREE (3) FOR 7N BASE AND LARGER.
8. FOUNDING NOTES SHALL VERIFY THAT ACTUAL SITE SOIL PARAMETERS MEET OR EXCEED E.I.A. "NORMAL" SOIL PARAMETERS.
9. DISH MOUNT PIPE IS TO BE ORDERED AS A SEPARATE ITEM. SEE APPROPRIATE DWG. NO. FOR ORDERING INFORMATION.

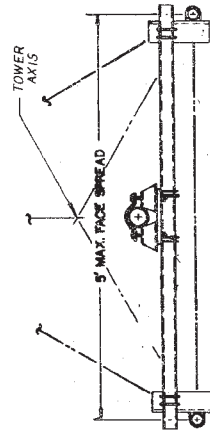
REVISED DRAWING: 4-13-89 | P.28

UNR-ROHN

THIS DRAWING IS THE PROPERTY OF UNR-ROHN. IT IS NOT TO BE REPRODUCED, COPIED OR TRACED, IN WHOLE OR IN PART, WITHOUT OUR WRITTEN CONSENT.

SELF SUPPORTING TVRO TOWERS FOR 12' DIA. TVRO DISH

SCALE	1" = 8.0'	DATE	MATERIAL	FINISH	WEIGHT
DRAWN BY	61J	1/6/86			
CHECKED BY	APM	1-15-86		FILE	
APPD. ENG.	JS	1-31-86		NUMBER	
APPD. SALES	VS	2-7-86		DRAWING NUMBER	C860158 RI
APPD. PROD.					



VIEW A-A