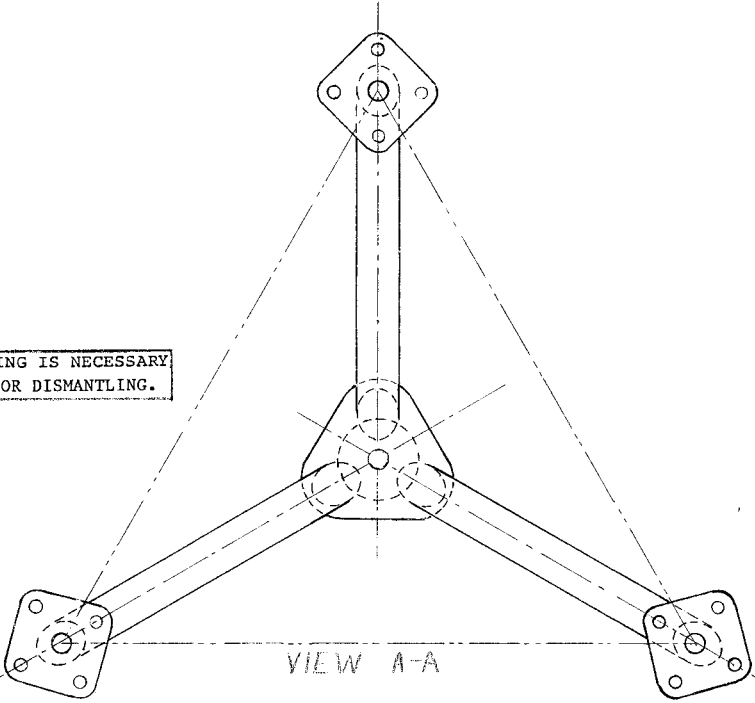


TEMPORARY STEEL GUYING IS NECESSARY DURING INSTALLATION OR DISMANTLING.

4'-10" APPROX.

ASSY. NO. 80TB (2 1/2" X STR LEG)
 ASSY. NO. 80TB (3" X STR LEG)
 (FOR FAB. SEE DWG. C 660107R11)

15/16" ϕ x 16" LG. PIER PIN
 BEARING PLATE
 CONCRETE PIER



RF	CHG BRNLS ECN# 660E - 6658	2-16-87	CCV
RA	ADDED TEMP GUYING NOTE	11-4-86	PJBV
R3	UPDATED DWG.	12-14-78	KTL
R2	ADD ASSY. NOS. & FAB. DWG. NO.	5/24/77	GLS
R1	CHANGED HEIGHT & PIER PIN SIZE	11-21-73	JER

NO.	DESCRIPTION	DATE	BY
REVISIONS			
R O H N			
TITLE TAPERED BASE SECTION FOR MODEL 80 TOWER			
THIS DRAWING IS THE PROPERTY OF ROHN. IT IS NOT TO BE REPRODUCED, COPIED, OR TRACED IN WHOLE OR IN PART WITHOUT OUR WRITTEN CONSENT.			FILE NO.
SCALE NONE	MATERIAL	FINISH	WT.
DWN BY H. ARCHANG	DATE MAR. 13, 1969	UNLESS OTHERWISE SPECIFIED DIMENSIONS ARE GIVEN IN INCHES	
CK'D BY A. JOHNSON	DATE 3-13-69	TOLERANCES DEC. FRAC. ANGLES	DWG. NO. B 690343 R
APP'D [Signature]	DATE 3-13-69	± ± ±	