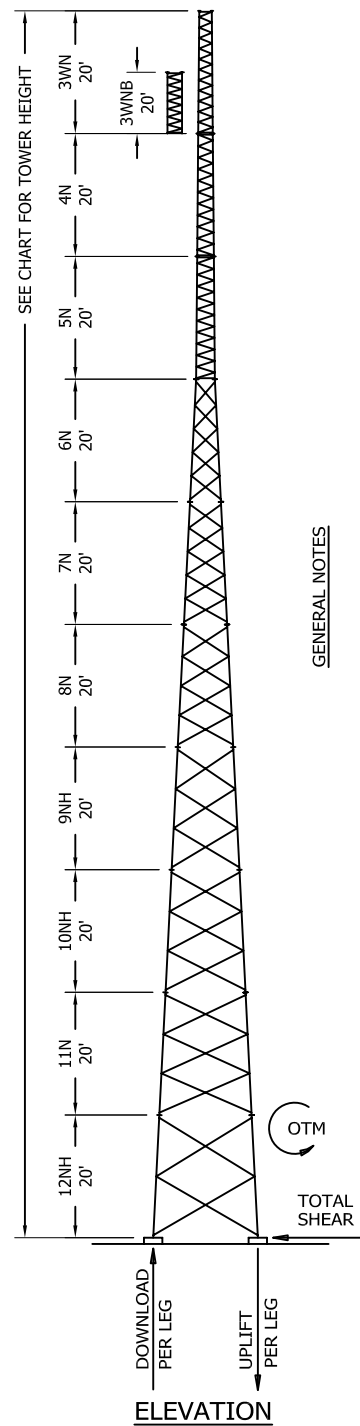


FILE NO. Standard-SSV

REV.	DESCRIPTION	DWGN	CHK	APP
2	REDRAW DATE: 10/20/2006	MF	JDM	HA
3	CHANGED NOTATIONS DATE: 5/9/07/2007	JK	JDM	HA
4	DATE: 5/9/07/2007	JDM	KTL	HA

TOWER ASSEMBLY NUMBER	TOWER HEIGHT (FEET)	TOP SECTION	BASE SECTION		ALLOWABLE PROJECTED AREA (SQ. FT.)				BASE REACTIONS				
			PART NO.	* A-BOLTS 12 REQ'D	FACE SPREAD	ROUNDS	FLATS	30 FEET BELOW TOP	DOWNLOAD (POUNDS)	UPLIFT (POUNDS)	TOTAL SHEAR (POUNDS)	OTM (FOOT-POUNDS)	
SS040D90	40	3WN	4N	SB4	2' 2	16.7	10.0	20.0	12.0	20,800	19,800	1,700	38,100
SS050D90	50	3WNB	5N	SB5	2' 6	16.7	10.0	20.0	12.0	27,900	26,600	1,950	58,900
SS060D90	60	3WN	5N	SB5	2' 6	14.2	8.5	17.5	10.5	33,700	32,400	1,930	71,400
SS070D90	70	3WNB	6N2	5/8X42	4' 6 1/4	14.2	8.5	17.5	10.5	27,100	25,500	2,760	103,100
SS080D90	80	3WN	6N2	5/8X42	4' 6 1/4	12.5	7.5	15.8	9.5	31,300	29,600	2,820	119,300
SS090D90	90	3WNB	7N165	5/8X42	6' 6 3/4	12.5	7.5	15.8	9.5	31,100	29,100	3,850	169,900
SS100D90	100	3WN	7N165	5/8X42	6' 6 3/4	10.0	6.0	13.3	8.0	33,100	30,900	3,830	180,600
SS110D90	110	3WNB	8N106	5/8X42	8' 6 3/4	10.0	6.0	13.3	8.0	36,000	33,400	5,070	255,500
SS120D90	120	3WN	8N106	5/8X42	8' 6 3/4	8.3	5.0	11.7	7.0	38,100	35,400	5,100	270,300
SS130D90	130	3WNB	9N82	5/8X42	10' 6 3/4	8.3	5.0	11.7	7.0	42,900	39,700	6,520	375,800
SS140D90	140	3WN	9N82	5/8X42	10' 6 3/4	6.7	4.0	10.0	6.0	44,500	41,200	6,540	389,800
SS150D90	150	3WNB	10N183	3/4X48	12' 7 1/4	6.7	4.0	10.0	6.0	50,900	47,000	8,280	532,100
SS160D90	160	3WN	10N183	3/4X48	12' 7 1/4	5.8	3.5	8.3	5.0	52,700	48,700	8,330	550,900
SS170D90	170	3WNB	11N332	7/8X60	14' 7 7/8	5.8	3.5	8.3	5.0	60,900	56,000	10,570	739,500
SS180D90	180	3WN	11N332	7/8X60	14' 7 7/8	5.0	3.0	7.5	4.5	62,900	57,900	10,650	763,700
SS190D90	190	3WNB	12N18	7/8X60	16' 8 3/8	5.0	3.0	7.5	4.5	73,000	66,900	13,060	1,007,000

* ANCHOR BOLTS OR SHORT BASE PART NO.



SEE CHART FOR TOWER HEIGHT

GENERAL NOTES

1. TOWER DESIGNS ARE IN ACCORDANCE WITH APPROVED NATIONAL STANDARD ANSI/EIA-222-F-1996 (NO ICE).
2. EQUIVALENT FLAT-PLATE ANTENNA AREAS, BASED ON EIA RS-222-C, MUST NOT EXCEED THE AREAS SHOWN FOR FLAT MEMBER ANTENNAS.
3. TOWER DESIGNS ASSUME ALLOWABLE PROJECTED AREAS ARE SYMMETRICALLY PLACED ON THE TOWER.
4. DESIGNS ASSUME ONE 7/8 LINE TO TOP AND TWO 7/8 LINES TO 30 FEET BELOW TOP, ONE PER FACE.
5. DO NOT INSTALL OR DISMANTLE TOWERS WITHIN FALLING DISTANCE OF ELECTRICAL AND/OR TELEPHONE LINES.
6. TOWER ERECTION AND DISMANTLING MUST BE DONE BY QUALIFIED AND EXPERIENCED PERSONNEL.
7. INSTALL WARNING PLATE (P/N ACWS) IN A HIGHLY VISIBLE LOCATION.
8. ALL ANTENNA INSTALLATIONS MUST BE GROUNDED IN ACCORDANCE WITH LOCAL AND NATIONAL CODES.
9. FOR ADDITIONAL BRACING, GROUTING AND DRAINAGE DETAILS SEE DRAWING SK720305.
10. FOR TAPERED TOP DETAILS SEE DRAWING SK670407.
11. ALL TOWERS WITH 3WN TOP SECTION PROVIDED WITH (P/N 3TT) TAPERED TOP.
12. ALL TOWERS WITH 3WNB TOP SECTION PROVIDED WITH (P/N 4TTN) TAPERED TOP.
13. FOR STEP BOLT DETAILS SEE DRAWING B651264.
14. FOR FOUNDATION DETAILS SEE DRAWING D870483 & 841300.

ROHN PRODUCTS
 6718 WEST PLANK ROAD
 PEORIA, IL 61604
 TOLL FREE 800-727-ROHN

THESE DRAWINGS ARE THE PROPERTY OF ROHN PRODUCTS. REPRODUCED, COPIED OR TRACED IN WHOLE OR IN PART WITHOUT OUR WRITTEN CONSENT.

ERECTOR PROFILE
 SSV/90 MPH FASTEST MILE/NO ICE

DWGN:	WDU	CHK'D:	CW	DATE:	5/9/02/1987
ENGR:	RAM	DRAWING NO: C870699			

REV: 4