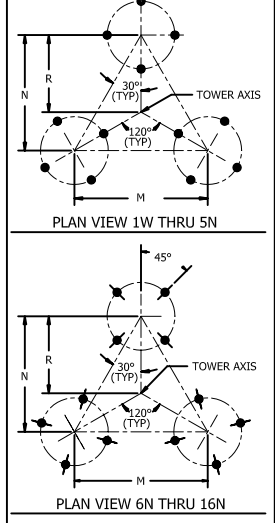
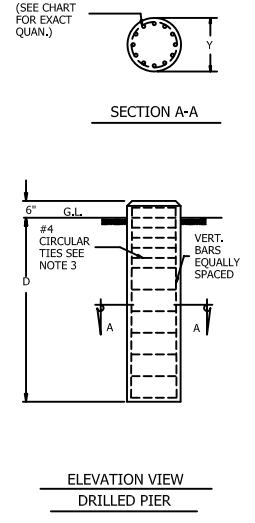
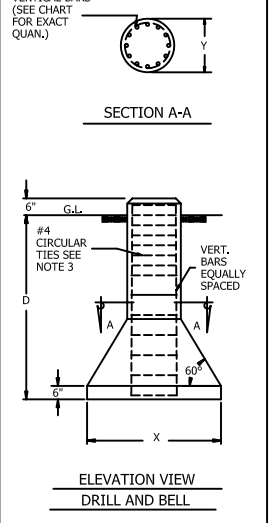
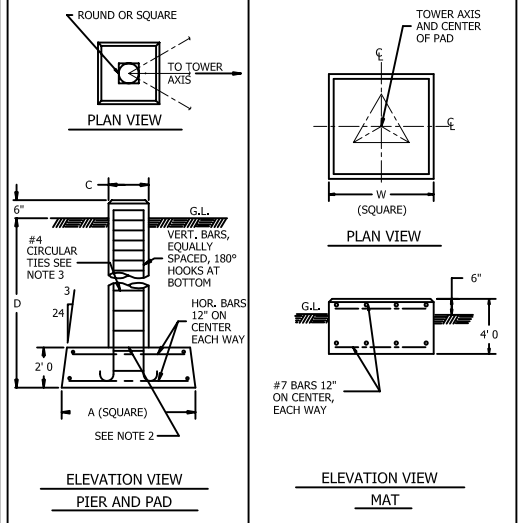


REVISIONS				
REV.	DESCRIPTION	DWN	CHK	APP
	UPDATED			
2	DATE: Jul/20/2006 REPLACED 1X78 WITH 1X70 IN ANCHOR BOLT DATA COLUMN	JDM	M.F	HA
3	DATE: Sep/13/2006 ADDED B050439 TO GENERAL NOTE #4	JWS	KTL	HA
4	DATE: Feb/28/2007	JWS	JDM	H.A

TOWER BASE SECT. NO.	ALLOW. LEG LOAD (POUNDS)	ALLOW. SHEAR (POUNDS PER LEG)	ANCHOR BOLT DATA					PIER AND PAD					MAT		DRILL AND BELL					DRILLED PIER											
			LAYOUT DIMENSIONS			SIZE 12 REQ'D OR SHORT BASE	BOLT CIRC. DIA. INCHES	PROJ. INCHES	D	A	C	VERT. BARS	HOR. BARS	REQ'D CONC. (CU. YDS. 3 FDNS)		W	REQ'D CONC. (CU. YDS.)	D	X	Y	VERT. BARS	REQ'D CONC. (CU. YDS. 3 FDNS)	D	Y	VERT. BARS	REQ'D CONC. (CU. YDS. 3 PIERS)					
			M	N	R									ROUND	SQUARE																
1W	4,530		1' 2	1' 0 1/8	0' 8 1/16	—	2 21/32							4' 0	2.4																
2W	11,200		1' 6	1' 3 9/16	0' 10 3/8	SB2	2 21/32							5' 6	4.5																
3WN	19,600		1' 10	1' 7 1/16	1' 0 11/16	SB3	3 1/2							6' 9	6.8																
4N	28,000		2' 2	1' 10 1/2	1' 3	SB4	4 1/4							8' 0	9.5																
5N	36,000		2' 6	2' 2	1' 5 5/16	SB5	4 1/4							8' 9	11.3																
6N	33,730		4' 6 1/4	3' 11	2' 7 5/16	5/8X42	4 15/16	3 1/2						10' 3	15.6																
7N	33,730	4,000	6' 6 3/4	5' 8 3/16	3' 9 1/2	5/8X42	4 15/16	3 1/2	8' 0	4' 6	2' 0	8 #6	#6	6.3	6.9	11' 6	19.6														
8N	52,530	6,000	8' 6 3/4	7' 5	4' 11 5/16	5/8X42	4 15/16	3 1/2	8' 9	5' 6	2' 0	8 #7	#6	8.7	9.4	14' 3	30.1	11' 0	4' 6	2' 6	10 #6	7.8	18' 6	2' 6	10 #6	10.4					
9N	43,600	7,500	10' 6 3/4	9' 1 3/4	6' 1 3/16	5/8X42	4 15/16	3 1/2	8' 9	5' 6	2' 0	8 #7	#6	8.7	9.4	16' 0	37.9	11' 0	4' 6	2' 6	10 #6	7.8	16' 0	2' 6	10 #6	9.0					
10N	43,600	10,000	12' 7 1/4	10' 11	7' 3 5/16	3/4X48	5 21/32	4	8' 9	5' 6	2' 0	8 #7	#6	8.7	9.4	18' 3	49.3	11' 0	4' 6	2' 6	10 #6	7.8	16' 0	2' 6	10 #6	9.0					
11N	64,930	10,000	14' 7 7/8	12' 8 5/16	8' 5 9/16	7/8X60	7 1/16	5	10' 0	5' 6	2' 6	8 #8	#6	10.8	12.0			12' 0	5' 0	2' 6	10 #6	9.2	21' 9	2' 6	10 #6	12.2					
12N	63,600	10,000	16' 8 3/8	14' 5 1/2	9' 7 11/16	7/8X60	7 1/16	5	10' 0	5' 6	2' 6	8 #8	#6	10.8	12.0			12' 0	5' 0	2' 6	10 #6	9.2	21' 6	2' 6	10 #6	12.0					
13N	82,930	10,000	18' 8 3/8	16' 2 5/16	10' 9 9/16	7/8X60	7 1/16	5	11' 0	5' 6	2' 6	10 #8	#6	11.3	12.7			12' 6	5' 6	2' 6	10 #6	10.5	22' 0	3' 0	12 #6	17.7					
14N	82,930	10,000	20' 9 3/8	17' 11 15/16	12' 0	1X70	9 1/2	5 1/2	11' 0	5' 6	2' 6	10 #8	#6	11.3	12.7			12' 6	5' 6	2' 6	10 #6	10.5	22' 0	3' 0	12 #6	17.7					
15N	129,330	15,000	22' 9 3/8	19' 8 3/4	13' 1 13/16	1X70	9 1/2	5 1/2	12' 6	6' 6	3' 0	12 #8	#6	17.3	19.7			14' 0	7' 0	3' 0	12 #7	18.4	27' 6	3' 6	12 #7	30.0					
16N	129,330	15,000	24' 9 3/8	21' 5 9/16	14' 3 11/16	1X70	9 1/2	5 1/2	12' 6	6' 6	3' 0	12 #8	#6	17.3	19.7			14' 0	7' 0	3' 0	12 #7	18.4	27' 6	3' 6	12 #7	30.0					

DWG REFERENCE


- GENERAL NOTES**
- FOR REQUIRED MATERIAL SPECIFICATIONS, INTALLATION NOTES, AND TOLERANCES SEE DRAWING NUMBER B841300
  - ROUGHEN CONSTRUCTION JOINT TO A FULL AMPLITUDE OF 1/4 INCH.
  - CIRCULAR TIES TO BE PLACED ON 3 INCH CENTERS FOR TOP 4 FEET AND 12 INCH CENTERS FROM 4 FEE TO MOTTOM, WITH 22 INCH LAPS.
  - FOR ANCHOR BOLT SETTING TEMPLATE INFORMATION AND BASE DETAILS SEE DRAWINGS NUMBERS CU730104 & B050439.



**ROHN** PRODUCTS  
6718 WEST PLANK ROAD  
PEORIA, IL 61604  
TOLL FREE 800-727-ROHN

THIS DRAWING IS THE PROPERTY OF ROHN, IT IS NOT TO BE REPRODUCED, COPIED OR TRACED IN WHOLE OR IN PART WITHOUT OUR WRITTEN CONSENT.

**FOUNDATION MODEL SSV TOWER N SERIES**

DWN: WDU	CHK'D: CW	DATE: Sep/11/1987
ENGR:	XK	
DRAWING NO: D870480	REV: 4	

Apr/23/2007 13:07:54 PM

E:\action