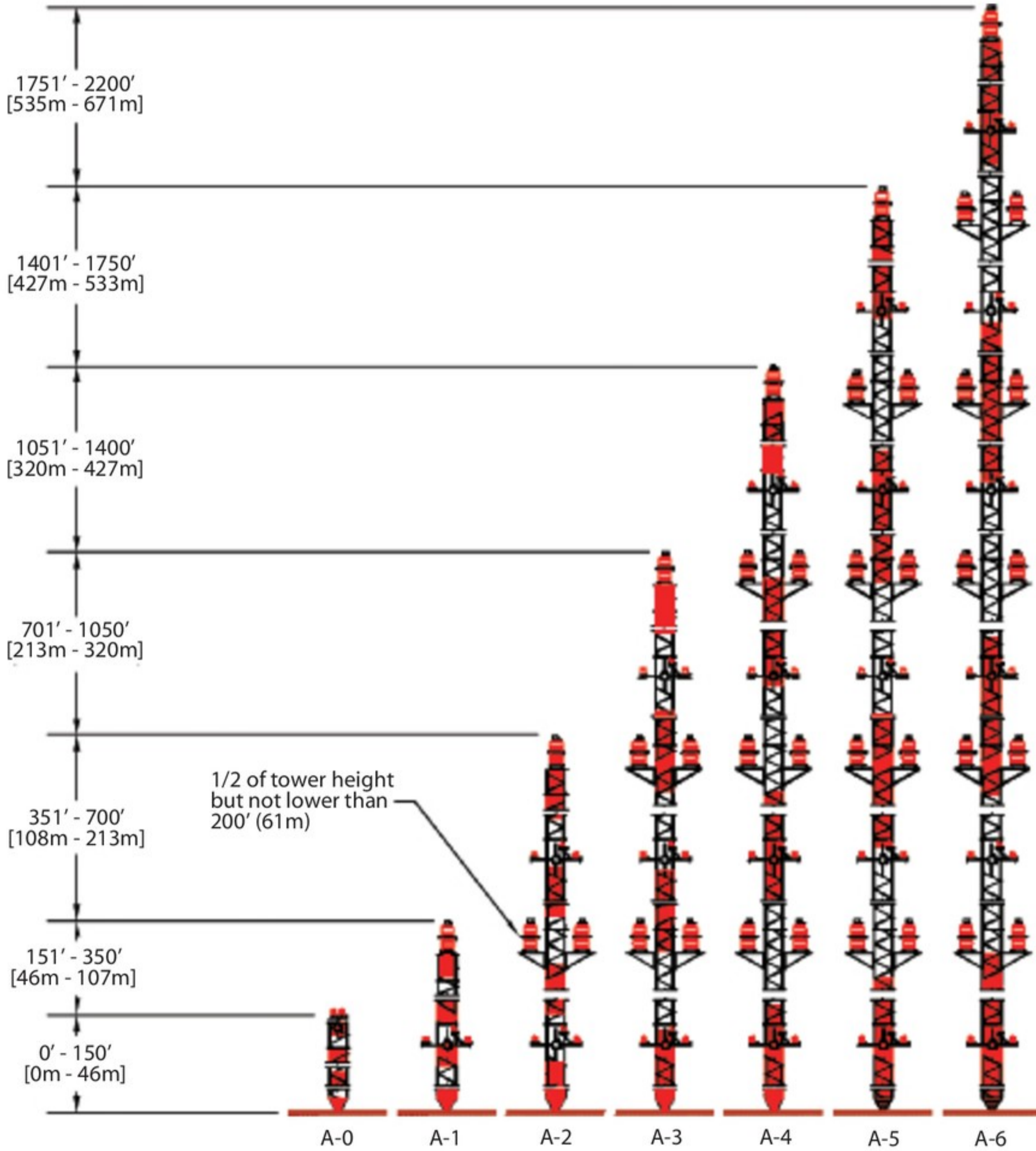


TOWER LIGHTING GUIDELINES





FAA STYLE "A" SERIES RED OBSTRUCTION



L-864 (Red Beacon)

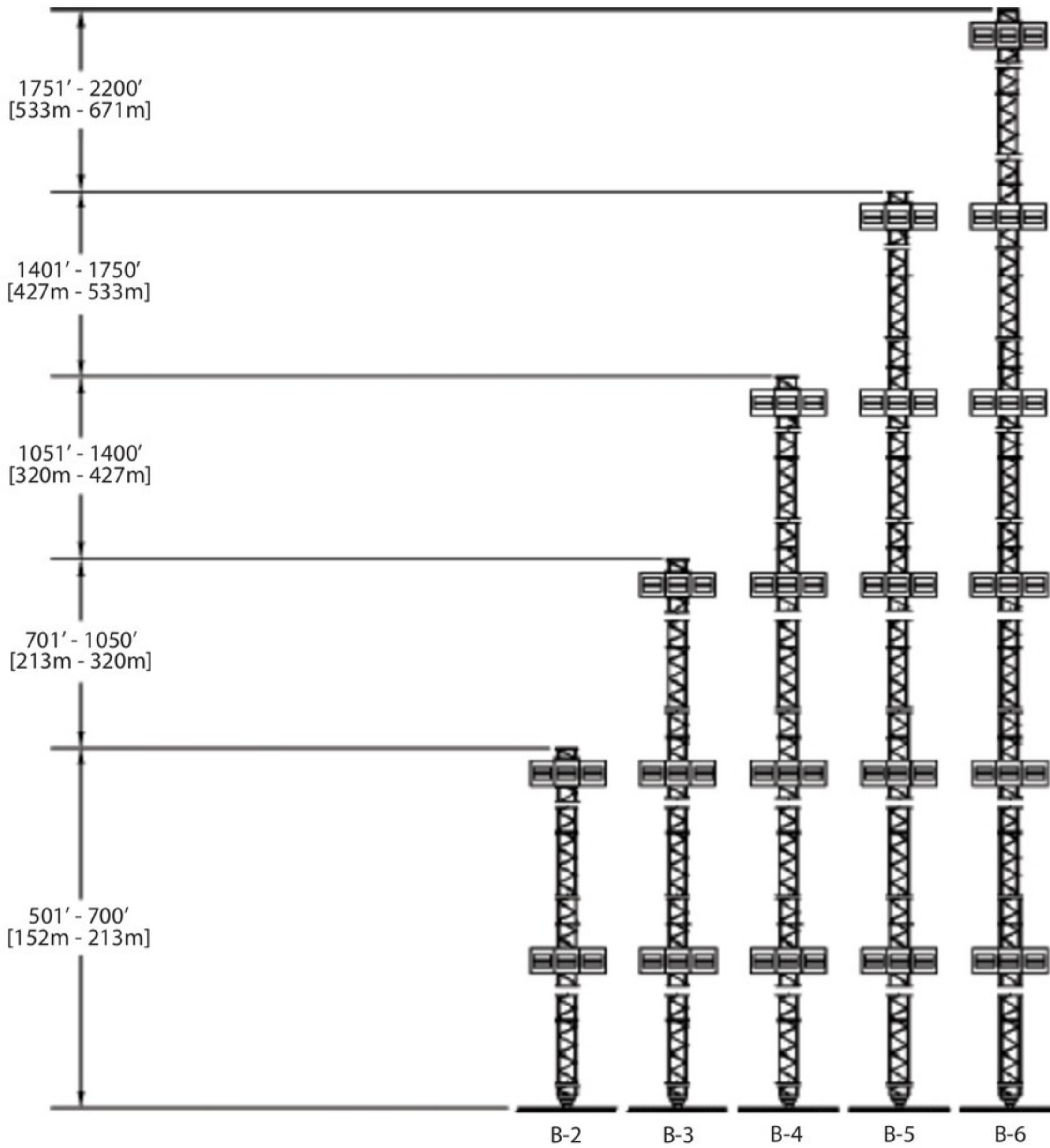


L-810 (Obstruction Light)

Day Protection = Aviation Orange/White Paint
 Night Protection = 2,000cd Red Beacon and Sidelights



FAA STYLE "B" SERIES HIGH INTENSITY

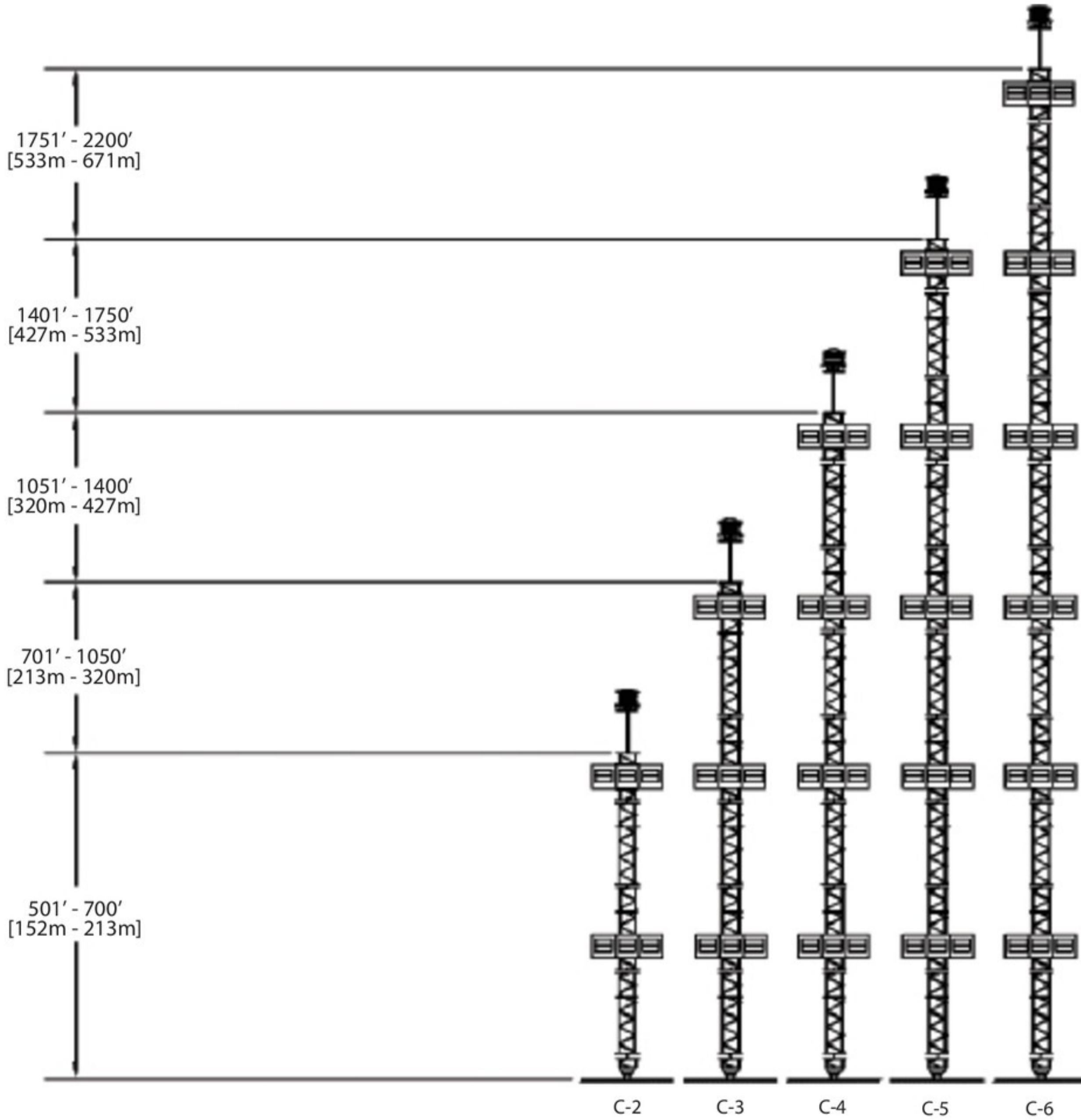


 L-856 (High Intensity Strobe)
3 Flashheads required per
level for 360° coverage

Day Protection = 200,000cd White Strobe
Twilight Protection = 20,000cd White Strobe
Night Protection = 2,000cd White Strobe



FAA STYLE "C" SERIES HIGH INTENSITY



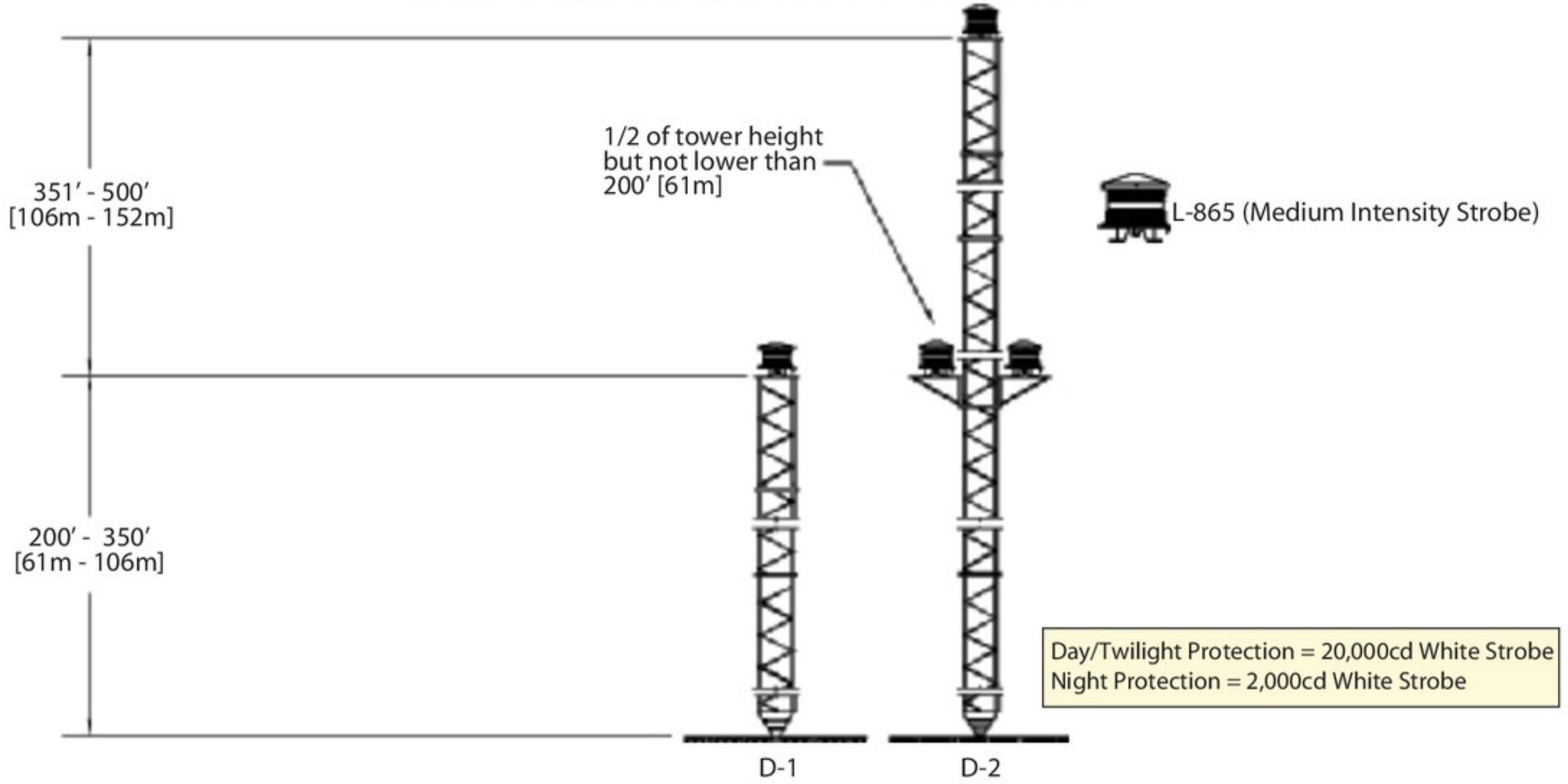
L-865 (Medium Intensity Strobe)
Required for appurtenances of 40'
or greater



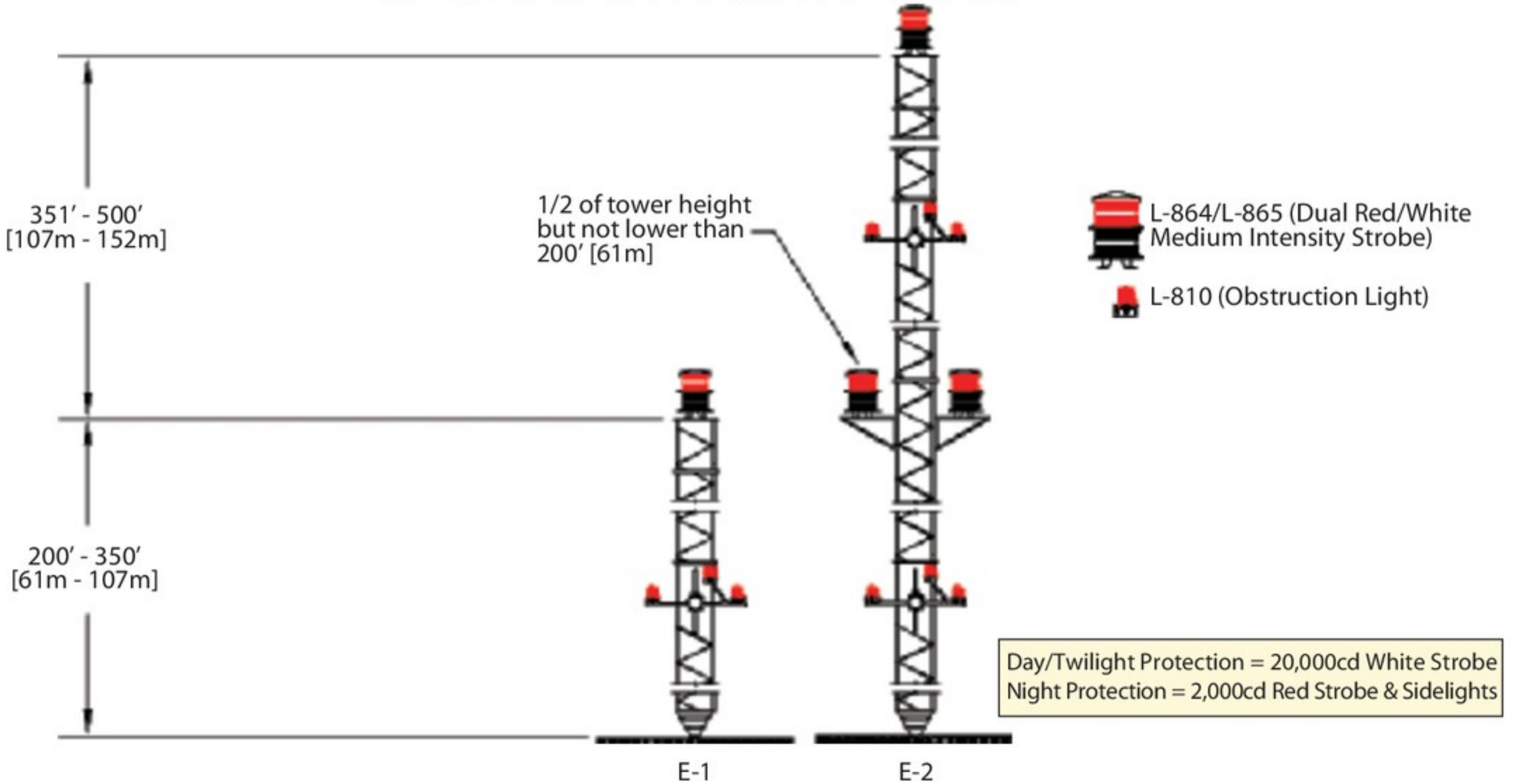
L-856 (High Intensity Strobe)
3 Flashheads required per level
for 360° coverage

Day Protection = 200,000cd White Strobe
Twilight Protection = 20,000cd White Strobe
Night Protection = 2,000cd White Strobe

FAA STYLE "D" SERIES MEDIUM INTENSITY WHITE

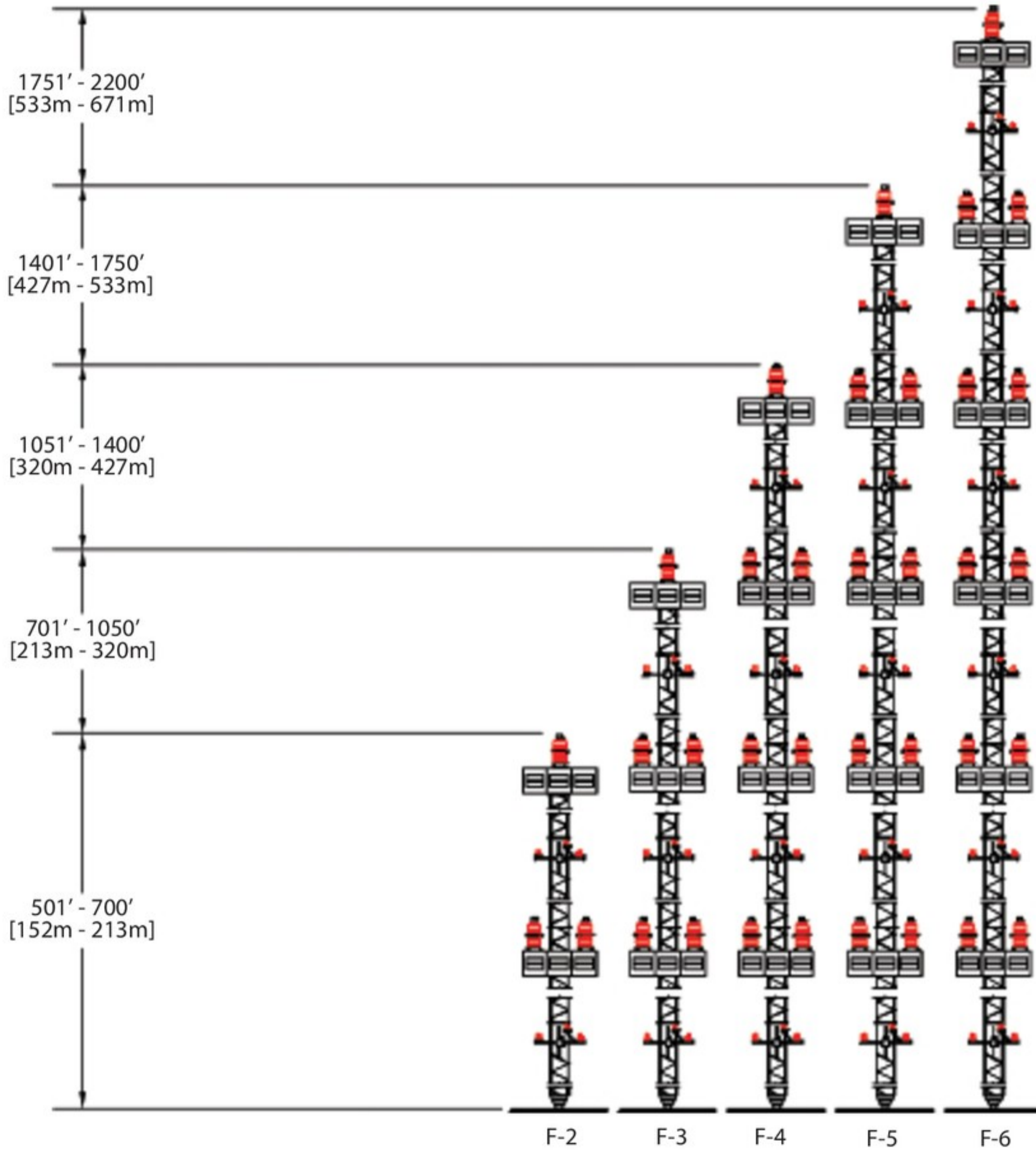





FAA STYLE "E" SERIES MEDIUM INTENSITY DUAL





FAA STYLE "F" SERIES DUAL HIGH INTENSITY



-  L-864 (Red Beacon)
-  L-810 (Obstruction Light)
-  L-856 (High Intensity Strobe)
3 Flashheads required per level
for 360° coverage

Day Protection = 200,000cd White Strobe
 Twilight Protection = 20,000cd White Strobe
 Night Protection = 2,000cd Red Beacon and Sidelights