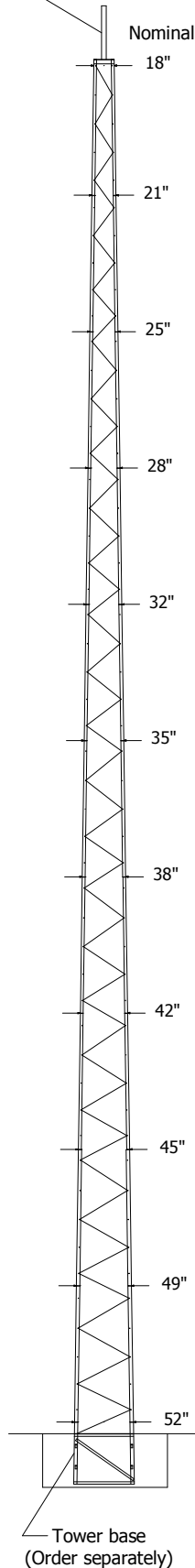


Top mount and plate
(Order separately)

SECTION	LENGTH	LEGS	BRACES
RSL1	10'-0"	(1) SLE01 (2) SLE02	(15) SLDG01
RSL2	10'-0"	(1) SLE03 (2) SLE04	(15) SLDG02
RSL3	10'-0"	(1) SLE05 (2) SLE06	(15) SLDG03
RSL4	10'-0"	(1) SLE07 (2) SLE08	(15) SLDG04
RSL5	10'-0"	(1) SLE09 (2) SLE10	(15) SLDG05
RSL6	10'-0"	(1) SLE11 (2) SLE12	(15) SLDG06
RSL7	10'-0"	(1) SLE13 (2) SLE14	(15) SLDG07
RSL8	10'-0"	(1) SLE15 (2) SLE16	(15) SLDG08
RSL9	10'-0"	(1) SLE17 (2) SLE18	(15) SLDG09
RSL10	10'-0"	(1) SLE19 (2) SLE20	(15) SLDG10





General Notes:

- 1) ASSEMBLY (OR DISMANTLING) SHALL BE DONE BY COMPETENT AND QUALIFIED PERSONNEL.
- 2) SECTIONS ARE AVAILABLE AS KNOCKDOWN COMPONENTS OR AS ASSEMBLED SECTIONS. ASSEMBLED SECTION KITS ARE IDENTIFIED WITH AN "A" LETTER ADDED TO THE END SECTION PART NUMBER.
- 3) TOWER LOADING SHALL NOT EXCEED THE LOADING INDICATED ON DRAWING No. ES-RSL-D01.
- 4) TOWER SHALL NOT BE INSTALLED WITHIN FALLING DISTANCE OF ELECTRICAL OR TELEPHONE WIRES.
- 5) PART NUMBERS ARE STAMPED ON ALL LEGS AND BRACE MEMBERS. REFER TO FOLLOWING PAGES FOR THE ASSEMBLY DETAILS.
- 6) FIELD CONNECTIONS SHALL BE BOLTED WITH LOCK WASHERS. NO FIELD WELDING SHALL BE ALLOWED.
- 7) TOWER OBSTRUCTION MARKING, IF REQUIRED SHALL BE IN CONFORMANCE WITH LOCAL, STATE AND FEDERAL REQUIREMENTS.
- 8) GROUNDING SHALL BE IN ACCORDANCE WITH LOCAL AND NATIONAL CODES. STANDARD GROUNDING KITS ARE AVAILABLE AS AN OPTION.
- 9) STEP BOLTS ARE AVAILABLE AS AN OPTION FOR CLIMBING THE ENTIRE HEIGHT OF THE TOWER. REFER TO PAGE No. 5 FOR DETAILS.
- 10) A RAM SAFETY DEVICE ASSEMBLY IS AVAILABLE AS AN OPTION FOR CLIMBING THE LEG OF THE TOWER. REFER TO PAGE No. 5 FOR DETAILS.
- 11) SEE DRAWING No. ES-RSL-F01 FOR SHORT BASE DETAILS, REACTIONS AND STANDARD MAT FOUNDATION DESIGNS BASED ON ANSI/TIA/EIA "NORMAL" SOIL. PRIOR TO INSTALLING STANDARD FOUNDATIONS, IT SHALL BE VERIFIED THAT ACTUAL SITE SOIL PARAMETERS EQUAL OR EXCEED "NORMAL" SOIL PARAMETERS.
- 12) TOWER TOP MOUNT KITS ARE AVAILABLE AS AN OPTION. REFER TO PAGE No. 5 FOR DETAILS.

Assembly Notes:

- 1) ALIGN LEG WITH STEP BOLT HOLES (LEGS WITH ODD PART NUMBERS) TO ONE SIDE OF THE TOWER FOR ALL SECTIONS.
- 2) ALL BRACES OF A GIVEN SECTION ARE OF SAME LENGTH.
- 3) THE BRACING AND SPLICE CONNECTION MATERIALS ARE INCLUDED IN THE BILL OF MATERIALS FOR THE UPPER SECTION AT THE SPLICE LEVEL.


 RADIAN www.radiancorp.com PEORIA, IL, USA +1 800 727 ROHN  ROHN OAKVILLE, ON, CANADA +1 866 4RADIAN					RSL TOWER ASSEMBLY DETAILS	
Copyright-Duplication, recording, disclosure and use is prohibited					JOB No: STANDARD	
REV	DESCRIPTION	DWN	CHK	APP	DWN: CG	CHK'D: JW
					ENG'R: CG	DATE: 6/28/05
					DRAWING No: ES-RSL-E01 1 OF 5	REV: 0
0		CG				

BILL OF MATERIALS



TOWER HEIGHT	RSL SECTIONS	TOWER KIT	TOWER TOP KIT *	TOTAL WEIGHT (LBS)**	OPTIONAL ITEMS (Order Separately)			
					TOP MOUNT KIT	BASE KIT	STEP BOLT KIT	SAFETY CABLE KIT
100	1 - 10	RSL100S110	RSLTA01	1808	RSLTM12	RSLBA10	RSLSB100	RSLSC100
90	2 - 10	RSL090H210	RSLTA02	1642	RSLTM12	RSLBA10	RSLSB90	RSLSC100
	1 - 9	RSL090L109	RSLTA01	1563	RSLTM12	RSLBA09	RSLSB90	RSLSC100
80	3 - 10	RSL080H310	RSLTA03	1527	RSLTM34	RSLBA10	RSLSB80	RSLSC80
	2 - 9	RSL080M209	RSLTA02	1422	RSLTM12	RSLBA09	RSLSB80	RSLSC80
	1 - 8	RSL080L108	RSLTA01	1322	RSLTM12	RSLBA08	RSLSB80	RSLSC80
70	4 - 10	RSL070H410	RSLTA04	1386	RSLTM34	RSLBA10	RSLSB70	RSLSC80
	3 - 9	RSL070M309	RSLTA03	1282	RSLTM34	RSLBA09	RSLSB70	RSLSC80
	1 - 7	RSL070L107	RSLTA01	1107	RSLTM12	RSLBA07	RSLSB70	RSLSC80
60	5 - 10	RSL060H510	RSLTA05	1243	RSLTM56	RSLBA10	RSLSB60	RSLSC80
	3 - 8	RSL060M308	RSLTA03	1041	RSLTM34	RSLBA08	RSLSB60	RSLSC80
	1 - 6	RSL060L106	RSLTA01	914	RSLTM12	RSLBA06	RSLSB60	RSLSC80
50	5 - 9	RSL050H509	RSLTA05	998	RSLTM56	RSLBA09	RSLSB50	RSLSC50
	3 - 7	RSL050M307	RSLTA03	826	RSLTM34	RSLBA07	RSLSB50	RSLSC50
	1 - 5	RSL050L105	RSLTA01	762	RSLTM12	RSLBA05	RSLSB50	RSLSC50
40	3 - 6	RSL040M306	RSLTA03	633	RSLTM34	RSLBA06	RSLSB40	RSLSC50
	1 - 4	RSL040L104	RSLTA01	612	RSLTM12	RSLBA04	RSLSB40	RSLSC50
30	3 - 5	RSL030M305	RSLTA03	481	RSLTM34	RSLBA05	RSLSB30	RSLSC30
	1 - 3	RSL030L103	RSLTA01	464	RSLTM12	RSLBA03	RSLSB30	RSLSC30
20	3 - 4	RSL020M304	RSLTA03	331	RSLTM34	RSLBA04	RSLSB20	RSLSC30
	1 - 2	RSL020L102	RSLTA01	317	RSLTM12	RSLBA02	RSLSB20	RSLSC30

* Tower Top Kit is included in the tower kit.



** Total weight does not include optional or accessory items.

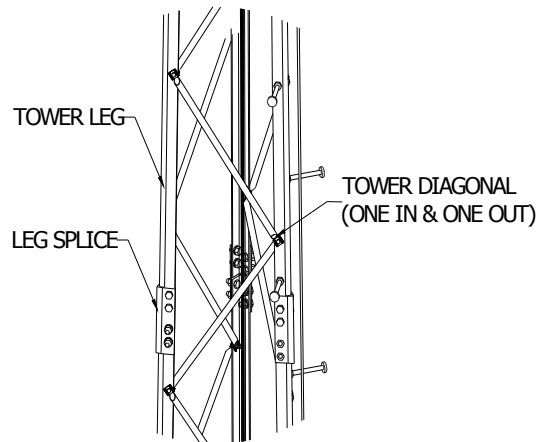
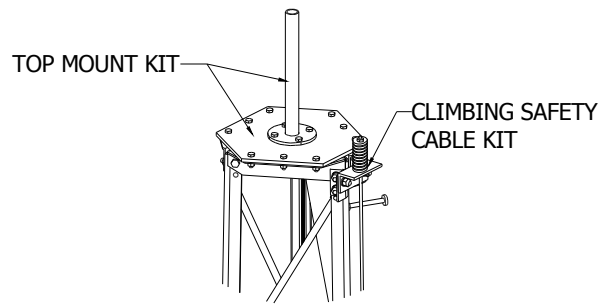
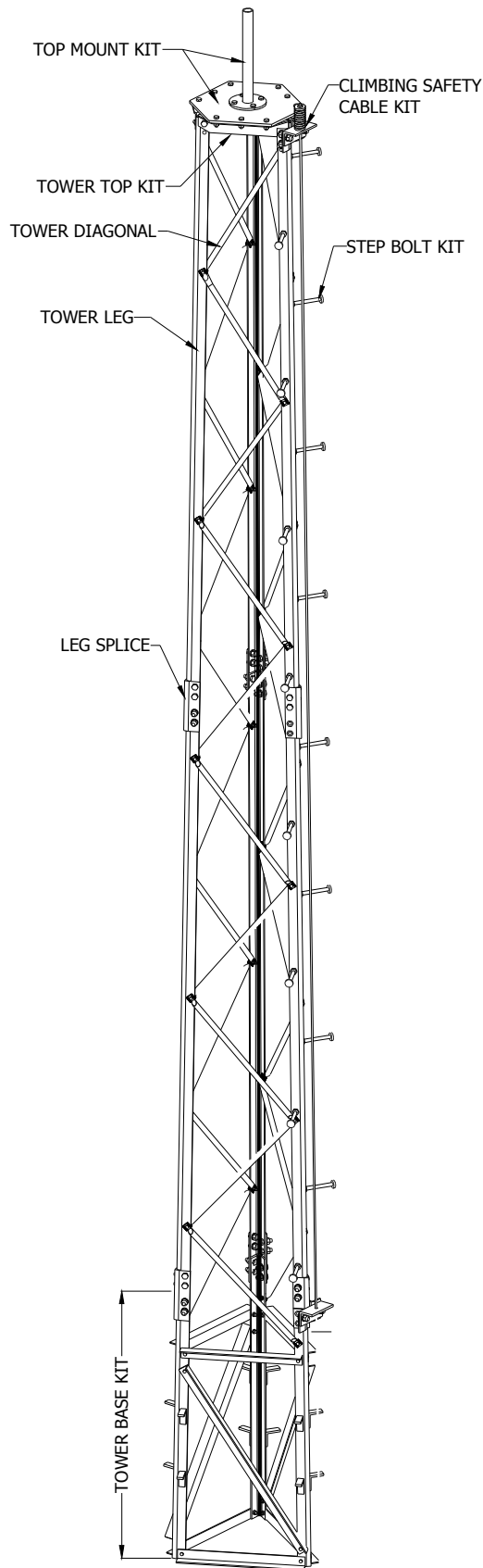
 RADIAN www.radiancorp.com PEORIA, IL, USA +1 800 727 ROHN OAKVILLE, ON, CANADA +1 866 4RADIAN Copyright-Duplication, recording, disclosure and use is prohibited					RSL TOWER ASSEMBLY DETAILS			
					JOB No: STANDARD			
REV	DESCRIPTION	DWN	CHK	APP	DWN: CG	CHK'D: JW		
					ENG'R: CG	DATE: 6/28/05		
					DRAWING No: ES-RSL-E01 2 OF 5	REV: 0		
0		CG	CG	TW				


SECTION BILL OF MATERIALS							
Section	Part No.	Description	Steel	Length	Qty	Weight	Total
RSL1	SLLE01	V 2 1/2 x 2 1/2 x 3/16"	350W	9'-11 11/16"	1	33.5	145
	SLLE02	V 2 1/2 x 2 1/2 x 3/16"	350W	9'-11 11/16"	2	67.0	
	SLDG01	1" OD Tubing x 18GA	Gr. 50	2'-7 3/16"	15	19.9	
	110090	Assy. 3/8" Bolt & Hex Nut	Gr. 5	1 1/2"	18	1.4	
	110197	3/8" lock washer			18	0.2	
	SLSC01	V 3 x 3 x 1/4"	350W	10 3/16"	3	12.6	
	110010	Assy. 5/8" Bolt & Heavy Hex Nut	A325	1 3/4"	24	9.4	
	110206	5/8" lock washer	B27.1		24	0.5	
RSL2	SLLE03	V 2 1/2 x 2 1/2 x 3/16"	350W	9'-11 11/16"	1	33.5	145
	SLLE04	V 2 1/2 x 2 1/2 x 3/16"	350W	9'-11 11/16"	2	67.0	
	SLDG02	1" OD Tubing x 18GA	Gr. 50	2'-8 1/16"	15	20.4	
	110090	Assy. 3/8" Bolt & Hex Nut	Gr. 5	1 1/2"	15	1.2	
	110197	3/8" lock washer			15	0.2	
	SLSC01	V 3 x 3 x 1/4"	350W	10 3/16"	3	12.6	
	110010	Assy. 5/8" Bolt & Heavy Hex Nut	A325	1 3/4"	24	9.4	
	110206	5/8" lock washer	B27.1		24	0.5	
RSL3	SLLE05	V 2 1/2 x 2 1/2 x 3/16"	350W	9'-11 11/16"	1	33.5	147
	SLLE06	V 2 1/2 x 2 1/2 x 3/16"	350W	9'-11 11/16"	2	67.0	
	SLDG03	1" OD Tubing x 18GA	Gr. 50	2'-10 15/16"	15	22.3	
	110090	Assy. 3/8" Bolt & Hex Nut	Gr. 5	1 1/2"	15	1.2	
	110197	3/8" lock washer			15	0.2	
	SLSC01	V 3 x 3 x 1/4"	350W	10 3/16"	3	12.6	
	110010	Assy. 5/8" Bolt & Heavy Hex Nut	A325	1 3/4"	24	9.4	
	110206	5/8" lock washer	B27.1		24	0.5	
RSL4	SLLE07	V 2 1/2 x 2 1/2 x 3/16"	350W	9'-11 11/16"	1	33.5	148
	SLLE08	V 2 1/2 x 2 1/2 x 3/16"	350W	9'-11 11/16"	2	67.0	
	SLDG04	1" OD Tubing x 18GA	Gr. 50	3'-1"	15	23.6	
	110090	Assy. 3/8" Bolt & Hex Nut	Gr. 5	1 1/2"	15	1.2	
	110197	3/8" lock washer			15	0.2	
	SLSC01	V 3 x 3 x 1/4"	350W	10 3/16"	3	12.6	
	110010	Assy. 5/8" Bolt & Heavy Hex Nut	A325	1 3/4"	24	9.4	
	110206	5/8" lock washer	B27.1		24	0.5	
RSL5	SLLE09	V 2 1/2 x 2 1/2 x 3/16"	350W	9'-11 11/16"	1	33.5	150
	SLLE10	V 2 1/2 x 2 1/2 x 3/16"	350W	9'-11 11/16"	2	67.0	
	SLDG05	1" OD Tubing x 18GA	Gr. 50	3'-3 3/4"	15	25.3	
	110090	Assy. 3/8" Bolt & Hex Nut	Gr. 5	1 1/2"	15	1.2	
	110197	3/8" lock washer			15	0.2	
	SLSC01	V 3 x 3 x 1/4"	350W	10 3/16"	3	12.6	
	110010	Assy. 5/8" Bolt & Heavy Hex Nut	A325	1 3/4"	24	9.4	
	110206	5/8" lock washer	B27.1		24	0.5	

 RADIAN www.radiancorp.com PEORIA, IL, USA +1 800 727 ROHN  OAKVILLE, ON, CANADA +1 866 4RADIAN					RSL TOWER ASSEMBLY DETAILS		
					JOB No: STANDARD		
REV	DESCRIPTION	DWN	CHK	APP	DWN:	CHK'D:	
					CG	JW	
					ENG'R:	DATE:	
					CG	6/28/05	
					DRAWING No:	REV:	
					ES-RSL-E01 3 OF 5	0	
0		CG	CG	JW			

SECTION BILL OF MATERIALS							
Section	Part No.	Description	Steel	Length	Qty	Weight	Total
RSL6	SLLE11	V 2 1/2 x 2 1/2 x 3/16"	350W	9'-11 11/16"	1	33.5	152
	SLLE12	V 2 1/2 x 2 1/2 x 3/16"	350W	9'-11 11/16"	2	67.0	
	SLDG06	1" OD Tubing x 18GA	Gr. 50	3'-6 1/2"	15	27.1	
	110090	Assy. 3/8" Bolt & Hex Nut	Gr. 5	1 1/2"	15	1.2	
	110197	3/8" lock washer			15	0.2	
	SLSC01	V 3 x 3 x 1/4"	350W	10 3/16"	3	12.6	
	110010	Assy. 5/8" Bolt & Heavy Hex Nut	A325	1 3/4"	24	9.4	
	110206	5/8" lock washer	B27.1		24	0.5	
RSL7	SLLE13	V 2 1/2 x 2 1/2 x 1/4"	350W	9'-11 11/16"	1	43.4	193
	SLLE14	V 2 1/2 x 2 1/2 x 1/4"	350W	9'-11 11/16"	2	86.8	
	SLDG07	1" OD Tubing x 18GA	Gr. 50	3'-9 7/16"	15	28.9	
	110090	Assy. 3/8" Bolt & Hex Nut	Gr. 5	1 1/2"	15	1.2	
	110197	3/8" lock washer			15	0.2	
	SLSC02	V 3 x 3 x 1/4"	350W	1'- 2 1/8"	3	18.0	
	110010	Assy. 5/8" Bolt & Heavy Hex Nut	A325	1 3/4"	36	14	
	110206	5/8" lock washer	B27.1		36	0.7	
RSL8	SLLE15	V 2 1/2 x 2 1/2 x 1/4"	350W	9'-11 11/16"	1	43.4	215
	SLLE16	V 2 1/2 x 2 1/2 x 1/4"	350W	9'-11 11/16"	2	86.8	
	SLDG08	1 1/4" OD Tubing x 16GA	Gr. 50	4' - 0"	15	51.4	
	110090	Assy. 3/8" Bolt & Hex Nut	Gr. 5	1 1/2"	15	1.2	
	110197	3/8" lock washer			15	0.2	
	SLSC02	V 3 x 3 x 1/4"	350W	1'- 2 1/8"	3	18.0	
	110010	Assy. 5/8" Bolt & Heavy Hex Nut	A325	1 3/4"	36	14	
	110206	5/8" lock washer	B27.1		36	0.7	
RSL9	SLLE17	V 3 x 3 x 1/4"	350W	9'-11 11/16"	1	51.2	241
	SLLE18	V 3 x 3 x 1/4"	350W	9'-11 11/16"	2	102.5	
	SLDG09	1 1/4" OD Tubing x 16GA	Gr. 50	4' - 3 1/8"	15	53.6	
	110090	Assy. 3/8" Bolt & Hex Nut	Gr. 5	1 1/2"	15	1.2	
	110197	3/8" lock washer			15	0.2	
	SLSC02	V 3 x 3 x 1/4"	350W	1'- 2 1/8"	3	18.0	
	110010	Assy. 5/8" Bolt & Heavy Hex Nut	A325	1 3/4"	36	14	
	110206	5/8" lock washer	B27.1		36	0.7	
RSL10	SLLE19	V 3 x 3 x 1/4"	350W	9'-11 11/16"	1	51.2	245
	SLLE20	V 3 x 3 x 1/4"	350W	9'-11 11/16"	2	102.5	
	SLDG10	1 1/4" OD Tubing x 16GA	Gr. 50	4'-5 15/16"	15	57.8	
	110090	Assy. 3/8" Bolt & Hex Nut	Gr. 5	1 1/2"	15	1.2	
	110197	3/8" lock washer			15	0.2	
	SLSC02	V 3 x 3 x 1/4"	350W	1'- 2 1/8"	3	18.0	
	110010	Assy. 5/8" Bolt & Heavy Hex Nut	A325	1 3/4"	36	14	
	110206	5/8" lock washer	B27.1		36	0.7	

 RADIAN www.radiancorp.com PEORIA, IL, USA +1 800 727 ROHN  ROHN Products OAKVILLE, ON, CANADA +1 866 4RADIAN					RSL TOWER ASSEMBLY DETAILS		
REV	DESCRIPTION	DWN	CHK	APP	DWN:	CHK'D:	
					CG	JW	
					ENG'R:	DATE:	
					CG	6/28/05	
					DRAWING No: ES-RSL-E01 4 OF 5		
					REV: 0		
0		CG	CG	JW			



 RADIAN www.radiancorp.com PEORIA, IL, USA OAKVILLE, ON, CANADA +1 800 727 ROHN +1 866 4RADIAN					RSL TOWER ASSEMBLY DETAILS	
					JOB No: STANDARD	
REV	DESCRIPTION	DWN	CHK	APP	DWN: CG	CHK'D: JW
					ENG'R: CG	DATE: 6/28/05
					DRAWING No: ES-RSL-E01 5 OF 5	REV: 0
0		CG	CG	TW		