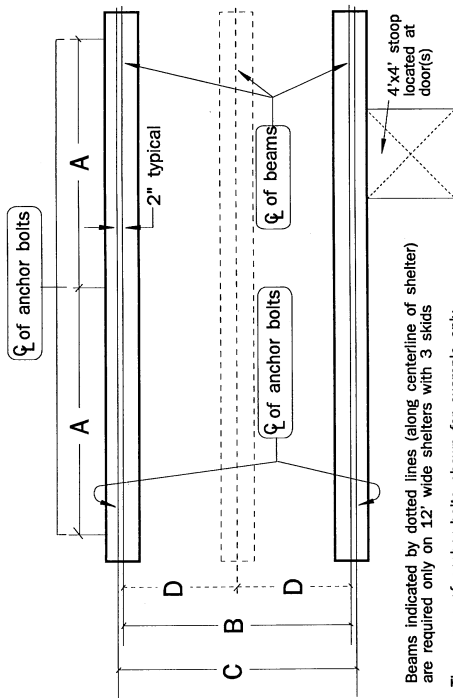


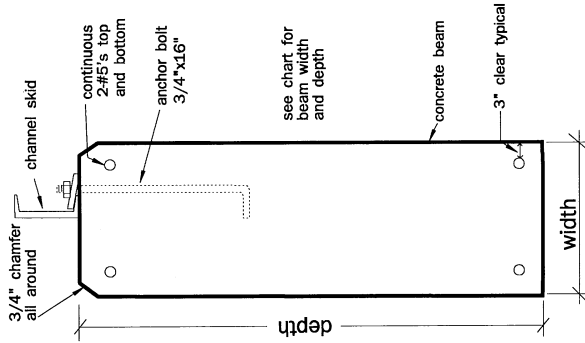


BEAM FOUNDATION PLAN



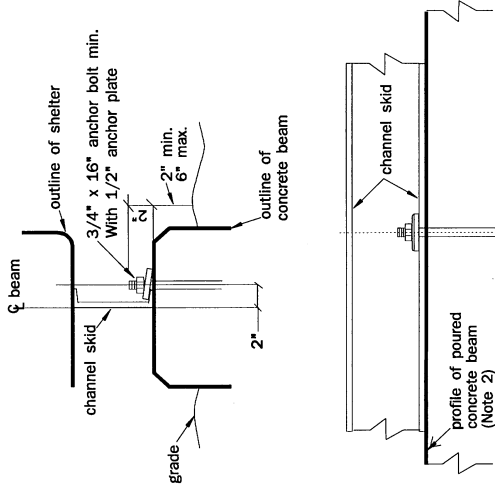
Beams indicated by dotted lines (along centerline of shelter) are required only on 12' wide shelters with 3 skids
 Three rows of anchor bolts shown for example only. Actual number of rows varies from two to eight depending on length of shelter. See Foundation Schedule to determine correct number of anchor bolts.

FOOTING



see chart for beam width and depth

BOLTED CONNECTION TO SKIDS



Foundation Schedule for shelters 8' or 10' wide				
Rows of bolts	Dimensions			
	A	B	C	D
8' (2)	6'-0"	7'-2"	7'-6"	7'-6"
10' (2)	8'-0"	7'-2"	7'-6"	7'-6"
12' (2)	10'-0"	7'-2"	7'-6"	7'-6"
14' (3)	6'-0"	7'-2"	7'-6"	7'-6"
16' (4)	4'-8"	7'-2"	7'-6"	7'-6"
18' (4)	5'-4"	7'-2"	7'-6"	7'-6"
20' (4)	6'-0"	7'-2"	7'-6"	7'-6"
22' (5)	5'-0"	7'-2"	7'-6"	7'-6"
24' (5)	5'-6"	7'-2"	7'-6"	7'-6"
26' (5)	6'-0"	7'-2"	7'-6"	7'-6"
28' (6)	5'-2-3/8"	7'-2"	7'-6"	7'-6"
30' (6)	5'-7-1/4"	7'-2"	7'-6"	7'-6"
32' (6)	6'-0"	7'-2"	7'-6"	7'-6"
34' (7)	5'-4"	7'-2"	7'-6"	7'-6"
36' (7)	5'-8"	7'-2"	7'-6"	7'-6"
38' (7)	6'-0"	7'-2"	7'-6"	7'-6"
40' (8)	5'-5-1/8"	7'-2"	7'-6"	7'-6"

Foundation Schedule for shelters 12' wide				
Rows of bolts	Dimensions			
	A	B	C	D
12' (2)	10'-0"	11'-0"	11'-4"	5'-6"
14' (3)	6'-0"	11'-0"	11'-4"	5'-6"
16' (4)	4'-8"	11'-0"	11'-4"	5'-6"
18' (4)	5'-4"	11'-0"	11'-4"	5'-6"
20' (4)	6'-0"	11'-0"	11'-4"	5'-6"
22' (5)	5'-0"	11'-0"	11'-4"	5'-6"
24' (5)	5'-6"	11'-0"	11'-4"	5'-6"
26' (5)	6'-0"	11'-0"	11'-4"	5'-6"
28' (6)	5'-2-3/8"	11'-0"	11'-4"	5'-6"
30' (6)	5'-7-1/4"	11'-0"	11'-4"	5'-6"
32' (6)	6'-0"	11'-0"	11'-4"	5'-6"
34' (7)	5'-4"	11'-0"	11'-4"	5'-6"
36' (7)	5'-8"	11'-0"	11'-4"	5'-6"
38' (7)	6'-0"	11'-0"	11'-4"	5'-6"
40' (8)	5'-5-1/8"	11'-0"	11'-4"	5'-6"

**Beam Foundation
Allowable snow and wind loads**

Beam Width	1'-0"	1'-0"	1'-0"	1'-6"	1'-6"	2'-0"
Beam Depth	2'-6"	3'-6"	4'-6"	4'-6"	5'-6"	5'-6"
Ve (MPH)	75	95	110	135	150	170

Ve = effective wind speed, mph.

Notes

- Center beam, without anchor bolts, required for 12'-0" wide shelter.
- Top of foundation must be level to within 1/8".
- Soil conditions must be verified by a local soils consultant prior to installation.
- Beams must extend below frost line.
- Foundation designs are based on maximum 25PSF floor live load occurring simultaneously with either maximum wind or snow loads.
- Foundations shown are based on net allowable soil bearing pressure of 2000 PLF.

ROHN

Standard ROHN Fiberglass Equipment Shelter foundation plan and details

Scale For reference only Date 9-1-93

Drawn by JHW

Checked By CLP

91-2604SR1

Copyright 1993 ROHN

This drawing is the property of ROHN. It may not be reproduced, copied or traced in whole or in any part without our written permission.

Specifications subject to change without notice.