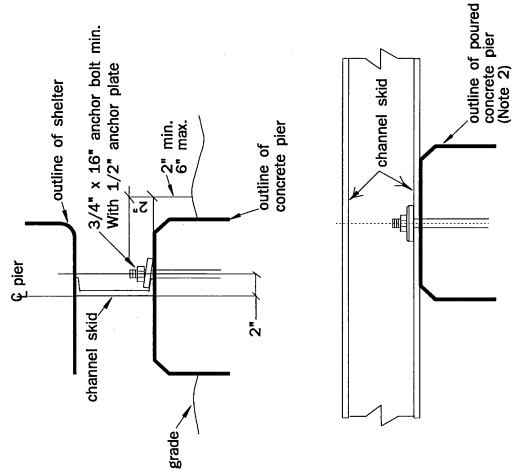
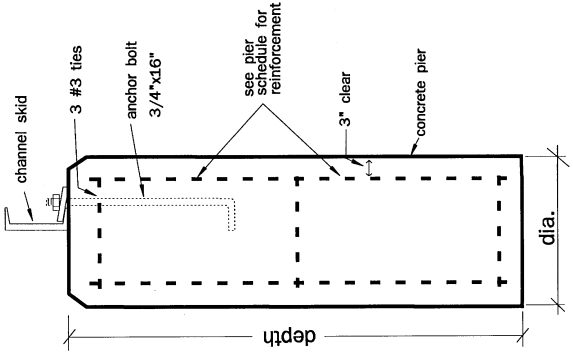




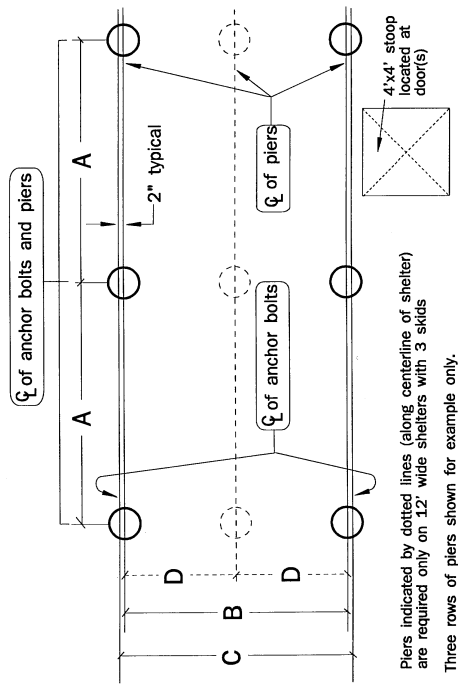
BOLTED CONNECTION TO SKIDS



FOOTING



PIER FOUNDATION PLAN



Piers indicated by dotted lines (along centerline of shelter) are required only on 12' wide shelters with 3 skids
 Three rows of piers shown for example only. Actual number of rows varies from two to eight depending on length of shelter. See Foundation Schedule to determine correct number of piers.

Foundation Schedule
for shelters 8' or 10' wide

Shelter length	Dimensions			
	A	B	C	D
8' (2)	6'-0"	7'-2"	7'-6"	7'-6"
10' (2)	8'-0"	7'-2"	7'-6"	7'-6"
12' (2)	10'-0"	7'-2"	7'-6"	7'-6"
14' (3)	6'-0"	7'-2"	7'-6"	7'-6"
16' (4)	4'-8"	7'-2"	7'-6"	7'-6"
18' (4)	5'-4"	7'-2"	7'-6"	7'-6"
20' (4)	6'-0"	7'-2"	7'-6"	7'-6"
22' (5)	5'-0"	7'-2"	7'-6"	7'-6"
24' (5)	5'-6"	7'-2"	7'-6"	7'-6"
26' (5)	6'-0"	7'-2"	7'-6"	7'-6"
28' (6)	5'-2-3/8"	7'-2"	7'-6"	7'-6"
30' (6)	5'-7-1/4"	7'-2"	7'-6"	7'-6"
32' (6)	6'-0"	7'-2"	7'-6"	7'-6"
34' (7)	5'-4"	7'-2"	7'-6"	7'-6"
36' (7)	5'-8"	7'-2"	7'-6"	7'-6"
38' (7)	6'-0"	7'-2"	7'-6"	7'-6"
40' (8)	5'-5-1/8"	7'-2"	7'-6"	7'-6"

Foundation Schedule
for shelters 12' wide

Shelter length	Dimensions			
	A	B	C	D
12' (2)	10'-0"	11'-0"	11'-4"	5'-6"
14' (3)	6'-0"	11'-0"	11'-4"	5'-6"
16' (4)	4'-8"	11'-0"	11'-4"	5'-6"
18' (4)	5'-4"	11'-0"	11'-4"	5'-6"
20' (4)	6'-0"	11'-0"	11'-4"	5'-6"
22' (5)	5'-0"	11'-0"	11'-4"	5'-6"
24' (5)	5'-6"	11'-0"	11'-4"	5'-6"
26' (5)	6'-0"	11'-0"	11'-4"	5'-6"
28' (6)	5'-2-3/8"	11'-0"	11'-4"	5'-6"
30' (6)	5'-7-1/4"	11'-0"	11'-4"	5'-6"
32' (6)	6'-0"	11'-0"	11'-4"	5'-6"
34' (7)	5'-4"	11'-0"	11'-4"	5'-6"
36' (7)	5'-8"	11'-0"	11'-4"	5'-6"
38' (7)	6'-0"	11'-0"	11'-4"	5'-6"
40' (8)	5'-5-1/8"	11'-0"	11'-4"	5'-6"

Foundation Pier Schedule

Dia.	Allowable snow and wind loads													
	12"	18"	24"	30"	36"	48"	Pf		Ve		Pf		Ve	
2000	4#5	3'-6"	4#5	3'-6"	6#6	4'-0"	6#6	4'-6"	8#7	12#8	100	100	100	100
3000	10	60	90	75	100	85	100	105	100	130	100	100	100	170
4000	30	60	100	75	100	85	100	105	100	130	100	100	100	170
5000	55	60	100	75	100	85	100	105	100	130	100	100	100	170
6000	75	60	100	75	100	85	100	105	100	130	100	100	100	170
7000	95	60	100	75	100	85	100	105	100	130	100	100	100	170

Pf = effective roof snow load, psf.
 Ve = effective wind speed, mph.
 Qall = allowable soil bearing capacity, psf.

- Reduce Pf by 4PSF for roof ice shield option.
- Minimum 24" diameter piers required for ballistic protection option.

This drawing is the property of ROHN. It may not be reproduced, copied or traced in whole or in any part without our written permission.
 Specifications subject to change without notice.

Notes

- Center pier, without anchor bolts, required for 12'-0" wide shelter.
- Tops of foundation piers must be level to within 1/8" of each other.
- Soil conditions must be verified by a local soils consultant prior to installation.
- Piers must extend below frost line.
- Foundation designs are based on maximum 25PSF floor live load occurring simultaneously with either maximum wind or snow loads.

ROHN

Standard ROHN Fiberglass Equipment
 Shelter foundation plan and details

Scale For reference only Date

Drawn by JHW

Checked By CLP

91-2607SR2

Copyright 1993 ROHN