

TOP POST P/N	SECTION DESCRIPTION	FLANGE BOLT ASS'Y
KH4317	ALL SSV & MW SECTIONS W/ 5 X 5 X 3/4 FLANGE	4-5/8 X 2-3/4 P/N 210034GA
KH4318	ALL SSV, MW & 90 SECTIONS W/ 6 X 6 X 3/4 FLANGE	4-3/4 X 2-3/4 P/N 210050GA
KH4319	ALL SSV, MW & 90 SECTIONS W/ 7 X 7 X 1 FLANGE	4-7/8 X 3-1/2 P/N 210063GA
KH4325	ALL SSV, MW & 90 SECTIONS W/ 9-1/2 X 9-1/2 X 1-1/4 FLANGE	4-1 X 4-1/4 P/N 210069GA
KH4327	ALL 5N & 5NST SECTIONS	4-5/8 X 2-1/4 P/N 210032GA
KH4321	ALL 6N & 65GS SECTIONS	4-5/8 X 2-1/4 P/N 210032GA
KH4322	ALL 80 W/6" FLANGE PLATES	4-3/4 X 2-3/4 P/N 210050GAW
KH4323	ALL 85 W/7" FLANGE PLATES	4-7/8 X 3-1/2 P/N 210063GA
KH4326	SSVSR SECTIONS W/ 6 X 6 X 1 FLANGE (W/5" BOLT CIRCLE)	4-3/4 X 3-1/4 P/N 210053GA

NO.	REVISION DESCRIPTION	DATE	BY	CHK'D BY	APP'D BY
R7	ADDED PART NUMBERS	6/25/94	JHD		
R6	ADDED SPRING & SLEEVE AT TOP & REDRAWN	4/22/91	WBU		
R5	DELETED INST REF. & ADDED KH3691	8/17/88	JHD		
R4	ADD P/N KH327 & 12" LEG BOTTOM BRACKET	4/27/87	WV		
R3	ADDED P/N KH2277	1/25/83	WV		
R2	ADDED REFERENCE TO #6555 STEPBOLT SECTIONS	3/8/81	JHD		
R1	ADDED BRACKET NO. NH-20	3/15/78	CH		

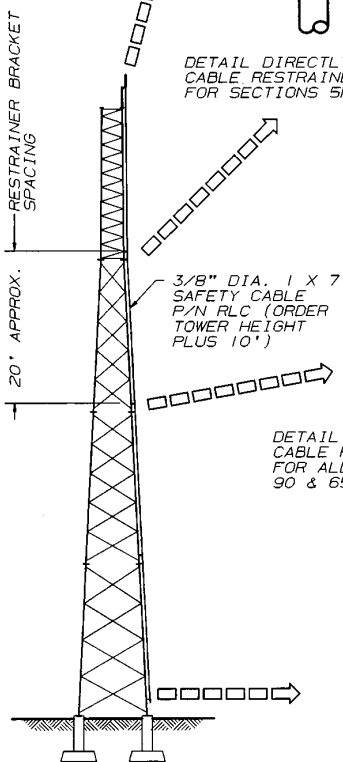
THIS DRAWING IS THE PROPERTY OF ROHN. IT IS NOT TO BE REPRODUCED OR TRANSMITTED IN ANY FORM OR BY ANY MEANS WITHOUT OUR WRITTEN CONSENT.

ROHN

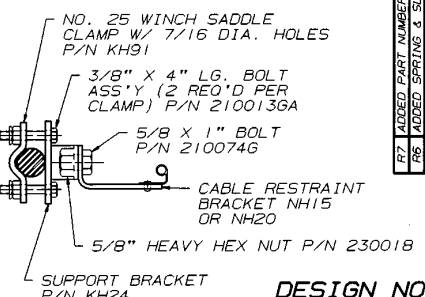
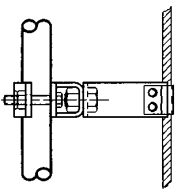
LEG MTD. SAFETY DEVICE WITH OPTIONAL POST FOR SSV, SSVSR, MW, 80, 80SR, 90 & 65GS TOWERS.

Scale: NONE
By: WBU 12/16/74
Drawn: WBU 12/20/74
Checked: CW 12/27/74
App. Eng.: CAW
App. Svr.: CAW 1/8/75

DRAWING NO.: C741234R7



DETAIL DIRECTLY ABOVE DEPICTS CABLE RESTRAINER INSTALLATION FOR SECTIONS 5N THRU 5NST



DESIGN NOTES:

1. ROHN-LOC CLAMP MUST BE USED WITH A 3/8" DIA. 1 X 7 STEEL SAFETY CABLE.
2. IN THE EVENT OF A FALL, INSPECT COMPLETE SAFETY CLIMB SYSTEM AND REPLACE ANY DAMAGED PARTS BEFORE REUSING.
3. ROHN-LOC SYSTEM MEETS OSHA 1910.27 AND ANSI A14.3-1984.

BOTTOM SAFETY BRACKET

P/N KH18 FOR LEGS 15/16" DIA. THRU 2-1/2" PIPE, 2 SADDLE CLAMPS (P/N KH323) W/ 4-3/8" X 4" BOLTS REQ'D (P/N 210013GA)
* P/N KH19 FOR LEGS 3" THRU 4" PIPE U-BOLTS REQ'D JR88AW FOR 3" PIPE, JR89AW FOR 3-1/2" PIPE & JR85AW FOR 4" PIPE
* P/N KH20 FOR LEGS 5" & 6" PIPE U-BOLTS REQ'D JR86AW FOR 5" PIPE & JR87AW FOR 6" PIPE
P/N KH21 FOR 8" PIPE LEGS ONLY JR90SA U-BOLTS REQ'D
P/N KH22 FOR 10" PIPE LEGS ONLY JR110A U-BOLTS REQ'D
P/N KH2616 FOR 12" PIPE LEGS ONLY JR120A U-BOLTS REQ'D

*NOTE: 4-FLAT WASHERS (P/N 2500116) FOR 1/2" U-BOLT REQ'D FOR SLOTTED HOLES

FABRICATION DRAWINGS
(FOR SHOP USE ONLY)

FOR BOTTOM SAFETY BRACKET SEE DRAWING C741229
FOR NH20 RESTRAINER BRACKET SEE DRAWING B760216
FOR NH15 RESTRAINER BRACKET SEE DRAWING B740714
FOR TOP SUPPORT POST SEE DRAWING C911048
FOR KH24 RESTRAINER SUPPORT BRACKET SEE DRAWING C741229
FOR TOP SUPPORT POST (5N & 5NST) SEE DRAWING B911120

