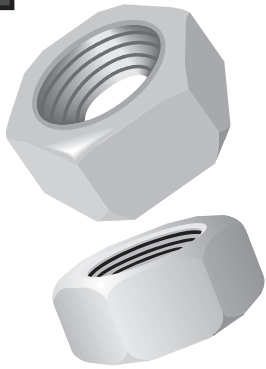


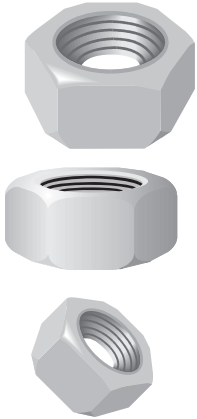


## Nuts, Heavy Hex - Hot Dip Galvanized



Description	Part Number	Weight
3/8"-16	230005	4/100
1/2"-13	230013	8/100
5/8"-11	230018	12/100
3/4"-10	230020	19/100
7/8"-9	230026	29/100
1"-8	230030	41/100

## Nuts, Finished Hex - Zinc Plated

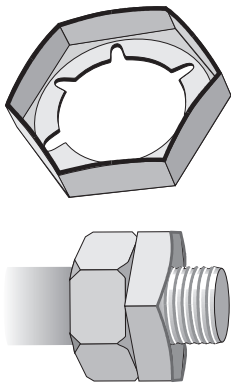


Description	Part Number	Weight
1/4"-20	240005	1/100
1/4"-28	240009	1/100
5/16"-18	240014	1/100
5/16"-24	240016	1/100
3/8"-16	240021	2/100

## Nuts, Finished Hex - Hot Dip Galvanized

Description	Part Number	Weight
5/16"-18	230002	84/100
7/16"-14	230009	3/100

## Locking Pal Nuts - Hot Dip Galvanized



Description	Part Number	Weight
5/16"-18	230001	1/100
3/8"-16	230007	1/100
1/2"-13	230011	1/100
5/8"-11	230017	1/100
3/4"-10	230021	2/100
7/8"-9	230025	3/100
1"-8	230029	5/100

Palnuts thread down bolt, tightening against the nut to prevent the nut from loosening. Open side of Palnut faces out.

## Nuts, Anco Lock - Hot Dip Galvanized



Description	Part Number	Weight
3/8"-16	230008	2/100
1/2"-13	230015	7/100
5/8"-11	230019	12/100
3/4"-10	230022	19/100
7/8"-9	230027	30/100
1"-8	230028	43/100