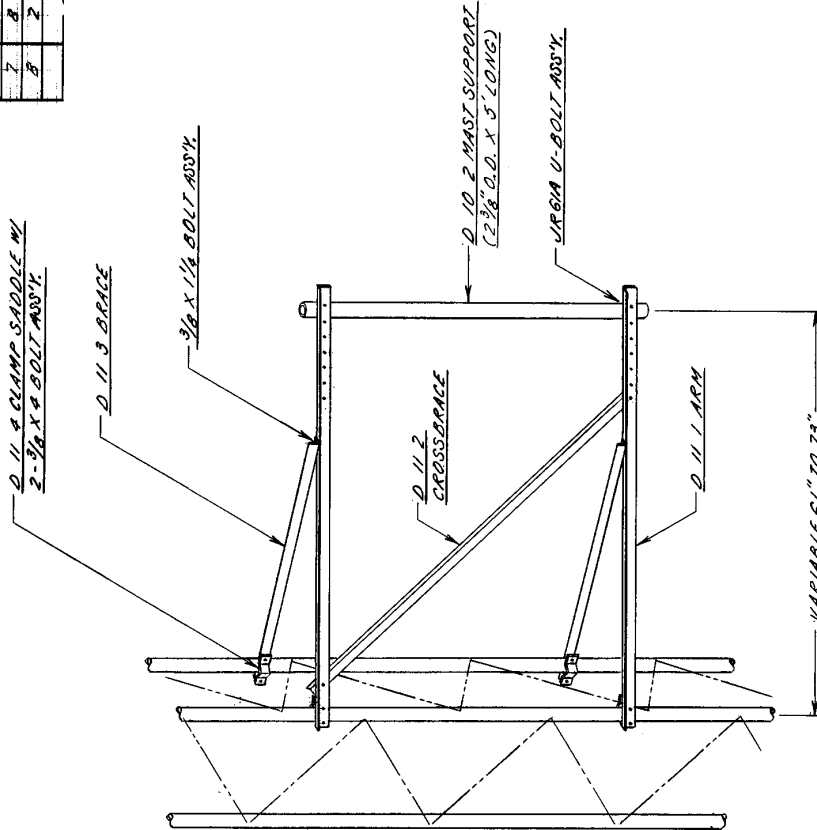




**BILL OF MATERIAL**

| ITEM | QTY | PART NO. | DESCRIPTION                      | ENG. NO. |
|------|-----|----------|----------------------------------|----------|
| 1    | 2   | D 11.1   | ARM                              | C 760106 |
| 2    | 1   | D 11.2   | CROSSBRACE                       | C 760106 |
| 3    | 2   | D 11.3   | BRACE                            | C 760106 |
| 4    | 4   | D 11.4   | CLAMP SADDLE                     | B710214  |
| 5    | 1   | D 10.2   | MAST SUPPORT PIPE 2.570 X 5' LG. |          |
| 6    | 4   | 21000569 | 3/8 X 1/2 BOLT ASSY.             |          |
| 7    | 8   | 21001368 | 3/8 X 3/4 BOLT ASSY.             |          |
| 8    | 2   | VR 61A   | U-BOLT ASSY.                     | B 651029 |



**NOTE:**  
SIDE ARM DESIGNED TO SUPPORT A  
MAXIMUM LATERAL THRUST OF 150 LB.  
APPLIED 5 FT. ABOVE TOP OF MAST  
SUPPORT PIPE.

| No. | Revision | Description                                    | A Date  | By  |
|-----|----------|--|---------|-----|
| R4  |          | ADDED SIDE ARM NOTE                            | 6/11/90 | WES |
| R3  |          | DELETED WIND LOAD                              | 3/18/88 | WES |
| R2  |          | REV. ASSY. PAK.                                | 1/12/88 | WES |
| R1  |          | REV. PAKE ADDED DESIGN WIND LOAD 10-2-78 (MID) | 1/12/88 | WES |

**ROHN®**

**D1130 SIDE ARM ASSEMBLY**

|                         |             |            |   |
|-------------------------|-------------|------------|---|
| Scale                   | NONE        | Tolerances | Unless otherwise specified, dimensions are given in inches. |
| Drawn by                | GCS         | Dimensions |   |
| Checked by              | WPL         | Material   |   |
| Approved by Engineering | JW          | Finish     |   |
| Approved by Production  |             | Weight     |   |
| Drawn by                |             | Angle      |   |
| Date                    | 11-3-76     |            |   |
| File Number             |             |            |   |
| Drawing Number          | C 760571 R4 |            |   |

**NOTE: SIDE ARM AND BRACE ANGLE MUST BE LOCATED AS CLOSE AS POSSIBLE TO LEG-BRACE INTERSECTION.**

**D1130 SIDE ARM**