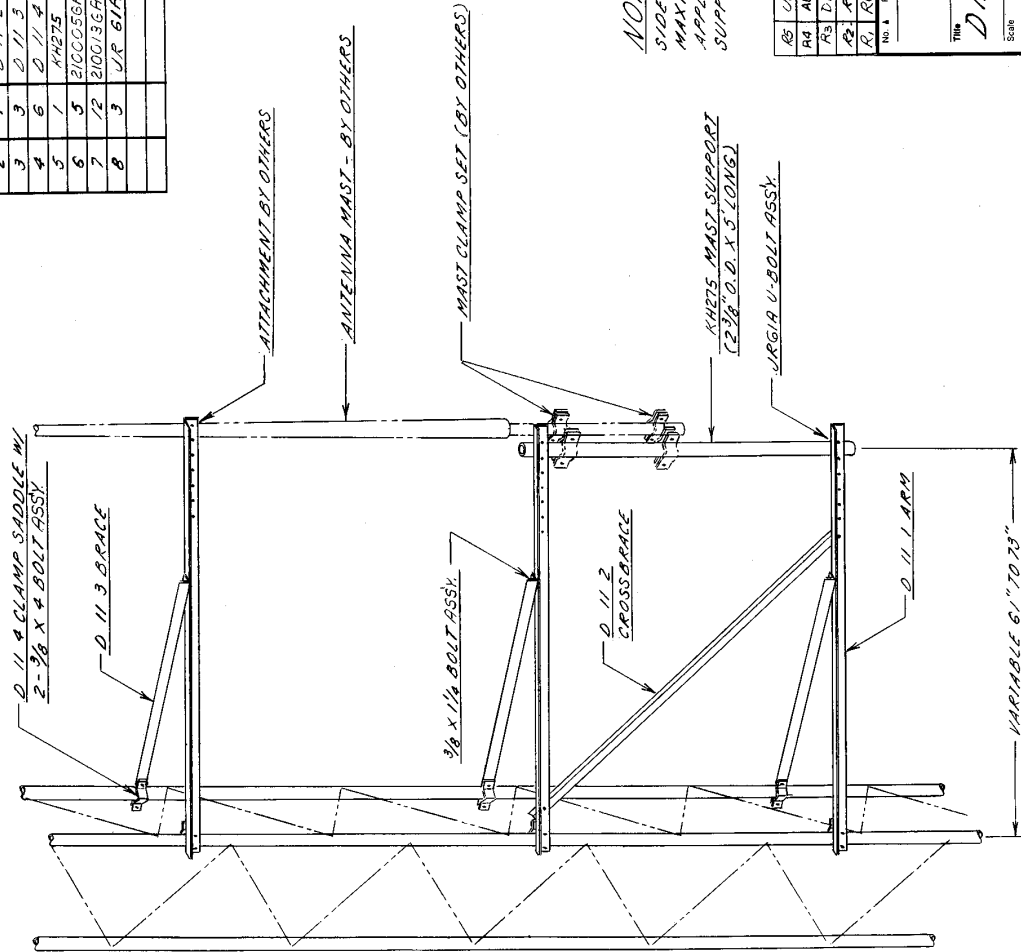




BILL OF MATERIAL			
ITEM	QTY.	PART NO.	DESCRIPTION
1	3	D 11 1	ARM
2	1	D 11 2	CROSSBRACE
3	3	D 11 3	BRACE
4	6	D 11 4	CLAMP SADDLE
5	1	KH215	MAST SUPPORT PIPE 2 STD. X 5' L.G.
6	3	B10006A	MAST SUPPORT PIPE 2 STD. X 5' L.G.
7	12	B10013GA	3/8 X 1/8 BOLT ASSY.
8	3	UR 61A	U-BOLT ASSY.



NOTE:
SIDE ARM DESIGNED TO SUPPORT A MAXIMUM LATERAL THRUST OF 100 LB. APPLIED 5 FT. ABOVE TOP OF MAST SUPPORT PIPE.

NOTE: SIDE ARM AND BRACE ANGLE MUST BE LOCATED AS CLOSE AS POSSIBLE TO LEG - BRACE INTERSECTION.

R5	UPDATED DIMS.	3-9-91	1/273
R4	ADDED SIDE ARM NOTE	6/1/80	WES
R3	DELETE WIND LOAD	5/18/79	WES
R2	REV. ASSY. PAN.	1/12/79	GLS
R1	REV. PAN. ADDED DESIGN WIND LOAD	10-2-78	MID

ROHN®

THE **D 1230 SIDEARM ASSEMBLY**

Scale	NONE	Unless otherwise specified, dimensions are given in inches.	
Drawn By	GLS	Tolerances	
Checked By	WES	Decimals	
Approved by Engineering	WJ	Fractions	
Approved by Production	WJ	Angles	
Approved by Sales	HR	Material	
Date	11-3-76	Finish	
File Number		Weight	
Draining Number	C 760579 R3	This drawing is the property of Union Rohn. It is not to be reproduced, copied or traced in whole or in part without our permission.	