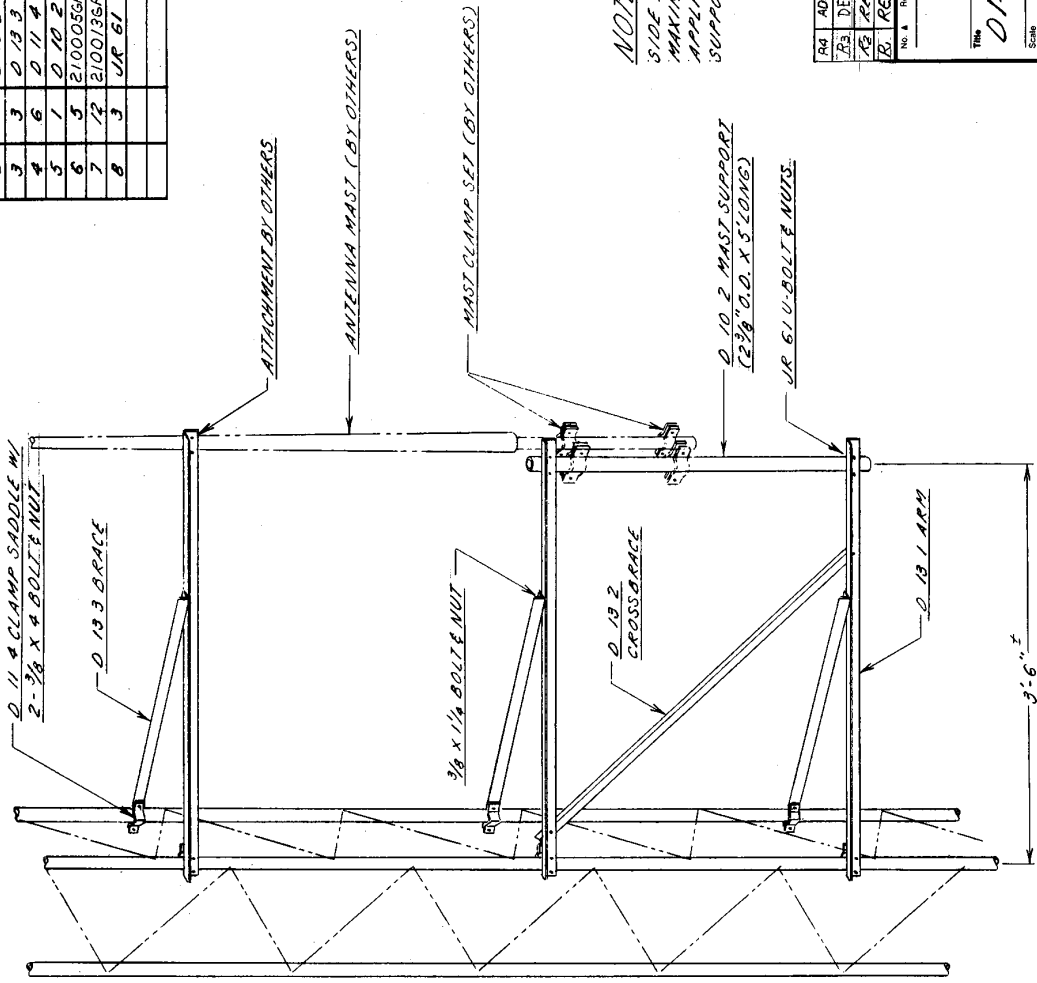




**BILL OF MATERIAL**

ITEM	QUAN.	PART NO.	DESCRIPTION	ENG. NO.
1	3	D 13 1	ARM	C 760575
2	1	D 13 2	CROSSBRACE	C 760575
3	3	D 13 3	BRACE	C 760575
4	6	D 11 4	CLAMP SADDLE	
5	1	D 10 2	MAST SUPPORT - PIPE 2 STD X 5 LG	
6	5	2100056A	3/8 X 1/4 BOLT ASS'Y.	
7	12	2100135A	3/8 X 4 BOLT ASS'Y.	
8	3	JR 61	U-BOLT NUTS	J CSRN



**NOTE:**  
SIDE ARM DESIGNED TO SUPPORT A MAXIMUM LATERAL THRUST OF 150 LB. APPLIED 5 FT. ABOVE TOP OF MAST SUPPORT PIPE.

No.	Revision	Description	Date	By
RA		ADDED SIDE ARM NOTE	6/11/90	WEB/T
RA		DELETED WIND LOAD	3/28/88	CHP
RA		REV. ASSY. DSK	7/27/79	GLS
RB		REV. DSK ADDED DESIGN WIND LOAD	10-2-73	MDI

**ROHN®**

**The D1430 SIDE ARM ASSEMBLY**

Scale	NONE	Date	7/23/76
Drawn by	GLS	Checked by	GLS
Checked by	GLS	Date	7-20
Approved by Engineering	GLS	Date	11-3-76
Approved by Production		Date	
Approved by Sales	JR	Date	11-5-76
Drawing Number	C 760580 R <sub>4</sub>		

**D1430 SIDE ARM**

**NOTE:** SIDE ARM AND BRACE ANGLE MUST BE LOCATED AS CLOSE AS POSSIBLE TO LEG-BRACE INTERSECTION.