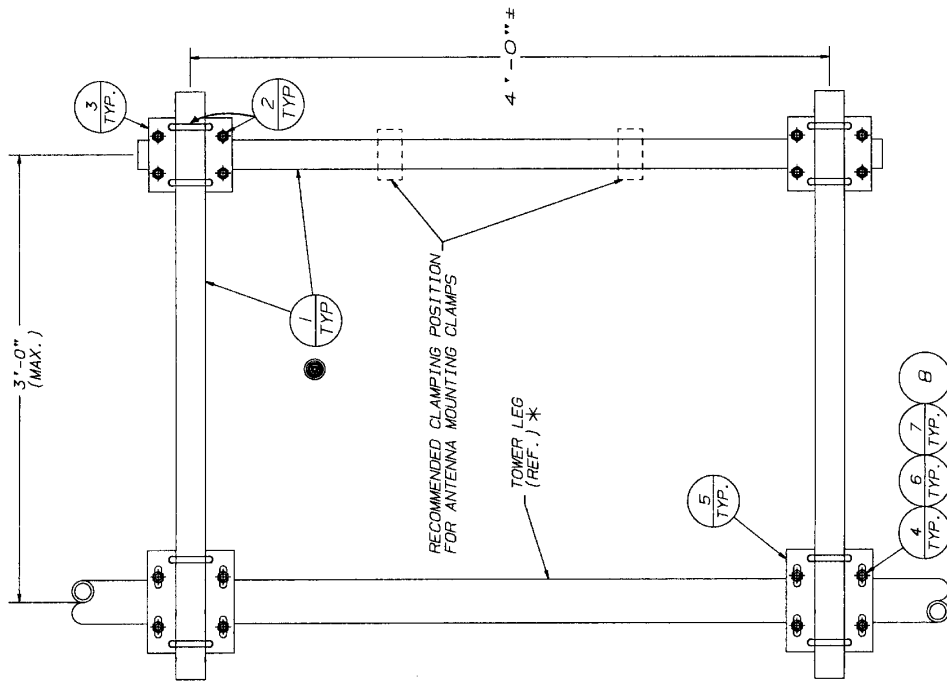




BILL OF MATERIAL

ITEM	QUAN.	PART NO.	DESCRIPTION	DWG. NO.
1	3	KH275	MOUNTING PIPE 2STD X 5' LG.	B770160
2	12	JRB3A	U-BOLT ASSY	B651028
3	2	KY14	CONNECTION PLATE	C740106
4	4	SEE CHART	U-BOLT	B651028
5	2	SEE CHART	MOUNTING PLATE	B810694
6	8	2500116	9/16" WASHER FOR U-BOLT	N/A
7	8	230013	1/2" NUT FOR U-BOLT	N/A
8	8	230011	1/2" PAL NUTS	N/A

ASSY P/N	PIPE LEG (O.D.)	MTG PLATE (QTY-2)	U-BOLT (QTY-4 EA.)
SA324A	2.375-4.5	KH1614	JR83 JR84 JR89 JR85 JR88
SA356A	5.56-6.63	KH1615	JR86 JR87
SA38A	8.75	KH1716	JR90S
SA310A	10.75	KH1960	JR110
SA312A	12.75	KH1961	JR120



NOTES

1. WASHERS ARE PROVIDED FOR ALL SLOTTED HOLES.
2. THIS SIDE ARM IS DESIGNED FOR AN ALLOWABLE ANTENNA LOADING OF 300# THRUST.
3. SIDE ARM MOUNTING PLATES MUST BE LOCATED AS CLOSE AS POSSIBLE TO LEG-BRACE INTERSECTION.
4. SIDE ARM ORIENTATION MAY VARY FROM TOWER AXIS.
- \* 5. CHECK TOWER ASSY DWG. FOR LEG SIZE TO DETERMINE ASSY NO. REQUIRED.
6. IF B\* (P/N:KH2229) MOUNTING PIPE IS NEEDED INSTEAD OF 5" (P/N:KH275) MOUNTING PIPE IN ITEM #1, ADD AN B TO THE END OF THE PART NUMBER. (EXAMPLE: SA324AB)
7. NUMBERS SHOWN IN BALLOONS DENOTES ITEM NUMBER IN BILL OF MATERIAL.

No. Revision Description Date Rev. By Chd. By App. By

THIS DRAWING IS THE PROPERTY OF ROHN, IT IS NOT TO BE REPRODUCED, COPIED OR TRACED IN WHOLE OR IN PART WITHOUT OUR WRITTEN CONSENT.

Scale: NONE By: Date: Title: **ROHN**

Drawn: JDM 3-19-99  
Checked: *[Signature]* 3/20/99  
App. Eng.: *[Signature]* 3/20/99

3' SIDE ARM ASSEMBLY FOR STRAIGHT OR TAPERED TOWER SECTIONS

DRAWING NO.: C990849