



20' W/G LADDER SECTION BILL OF MATERIAL (M.20FBKND)

ITEM	QTY	PART NO.	DESCRIPTION	DWG NO.
1	2	WY3429	20' W/G LADDER RAIL	CB40372
2	5	WY7460	LADDER RUNG (8 HOLE)	C901B27
3	2	WY3499	SPLICE PLATE	BB20888
4	4	2500068	3/8" WASHER	C770404
5	14	2100056A	3/8x1-1/4 BOLT ASSEMBLY	C770404
6	REF	SEE CHART	MOUNTING CLIP ASSY	SEE CHART

10' W/G LADDER SECTION BILL OF MATERIAL (M.10FBKND)

ITEM	QTY	PART NO.	DESCRIPTION	DWG NO.
1	2	WY3426	10' W/G LADDER RAIL	CB40372
2	3	WY7460	LADDER RUNG (8 HOLE)	C901B27
3	2	WY3499	SPLICE PLATE	BB20888
4	4	2500068	3/8" WASHER	C770404
5	10	2100056A	3/8x1-1/4 BOLT ASSEMBLY	C770404
6	REF	SEE CHART	MOUNTING CLIP ASSY	SEE CHART

GENERAL NOTES

1. SPACE LADDER CLIPS AS SHOWN.
2. THE W/G LADDER MAY REQUIRE FIELD CUTTING TO THE LENGTH OF THE FIELD ASSEMBLY.
3. THE W/G LADDER MAY BE MOVED HORIZONTALLY FOR PROPER ALIGNMENT.
4. WASHERS ARE PROVIDED FOR ALL SLOTTED HOLES.
5. TOWER BRACE REQUIRED. MOUNTED INSIDE OR OUTSIDE OF THE W/G LADDER MUST BE OFFSET FROM THE CENTER OF THE W/G LADDER WHEN USED WITH A FACE MOUNTED CLIMBING LADDER FOR REQUIRED CLEARANCES.

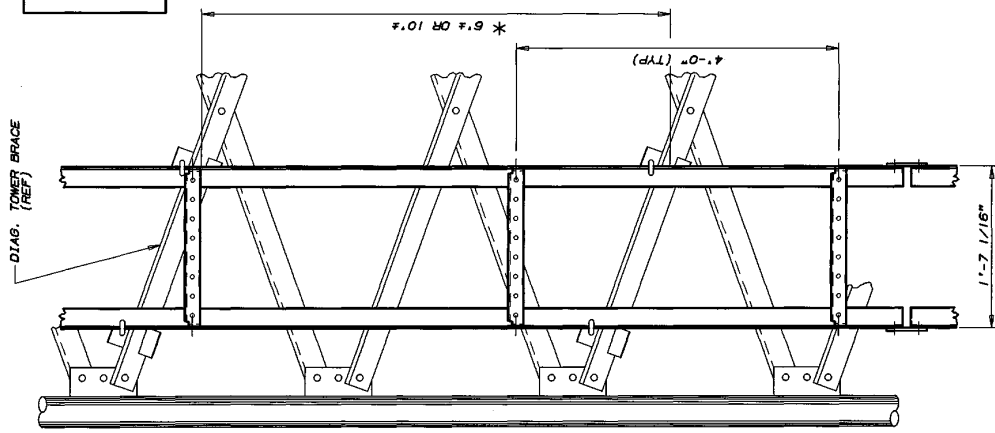
W/G LADDER MOUNTING CLIP ASSEMBLIES

CLIP ASSEMBLY P/N	TOWER BRACE SIZE (L)	LADDER CLIP		J-BOLT			
		P/N	DWG. NO.	QTY	P/N	DWG. NO.	QTY
KY683	1-1/2"	H173	BB20883	2	J444A	B2942A	2
KY685	1-3/4"-2-1/2"	H173	BB20883	2	J51A	B2947	2
KY687	3"	H174	BB20883	2	J51A	B2947	2
KY1287A	3-1/2"-4"	H174	BB20883	2	J107A	B2910B	2

*** CLIP ASSEMBLY ORDERING INFO**

ALL SECTIONS EXCEPT 12N THRU 15N, ORDER 3 CLIP ASSYS (SEE BRACE SIZE) WITH EACH 20' TOWER SECTION OR 2 CLIP ASSYS FOR EACH 10' TOWER SECTION

12N, 13N, 14N, 15N & 16N: ORDER 2 CLIP ASSYS (SEE BRACE SIZE) WITH EACH 20' OR 10' TOWER SECTION



NOTE: IF CIRCULAR W/G IS USED, THREADED ADAPTERS, PROVIDED BY OTHERS, MAY BE REQUIRED TO PERFECTLY ALIGN W/G'S ON LADDER.

No. Revision Description

THIS DRAWING IS THE PROPERTY OF ROHN, IT IS NOT TO BE REPRODUCED OR TRANSMITTED IN ANY FORM OR BY ANY MEANS, WITHOUT OUR WRITTEN CONSENT.

ROHN

LADDER ASSY W/G FACE MTD FOR SSV TOWERS 8 HOLE 4" KD 2.25" O.C. 3/4" & 7/16" DIA.

Rev.	By	Date	Title
1	WEB	10/26/90	
2	WJL	10/26/90	
3	WJL	10/26/90	

App. Engineer: WJL

App. Drafter: WJL

App. Checker: WJL

App. Designer: WJL

App. Checker: WJL

App. Designer: WJL

DRAWING NO.: C901B28