



20" W/6 LADDER SECTION BILL OF MATERIAL (ML20FBKMD)				
ITEM	QTY	PART NO.	DESCRIPTION	DWG NO.
1	2	WY3425	20" W/6 LADDER RAIL	CB40372
2	5	WY7460	LADDER RUNG (8 HOLE)	C901B27
3	2	WY3498	SPlice PLATE	B620688
4	4	2500086	3/8" WASHER	C770404
5	14	2100056A	3/8x1-1/4 BOLT ASSEMBLY	C770404
6	REF	SEE CHART	MOUNTING CLAMP ASSY	SEE CHART

10" W/6 LADDER SECTION BILL OF MATERIAL (ML10FBKMD)				
ITEM	QTY	PART NO.	DESCRIPTION	DWG NO.
1	2	WY3426	10" W/6 LADDER RAIL	CB40372
2	3	WY7460	LADDER RUNG (8 HOLE)	C901B27
3	2	WY3498	SPlice PLATE	B620688
4	4	2500086	3/8" WASHER	C770404
5	10	2100056A	3/8x1-1/4 BOLT ASSEMBLY	C770404
6	REF	SEE CHART	MOUNTING CLAMP ASSY	SEE CHART

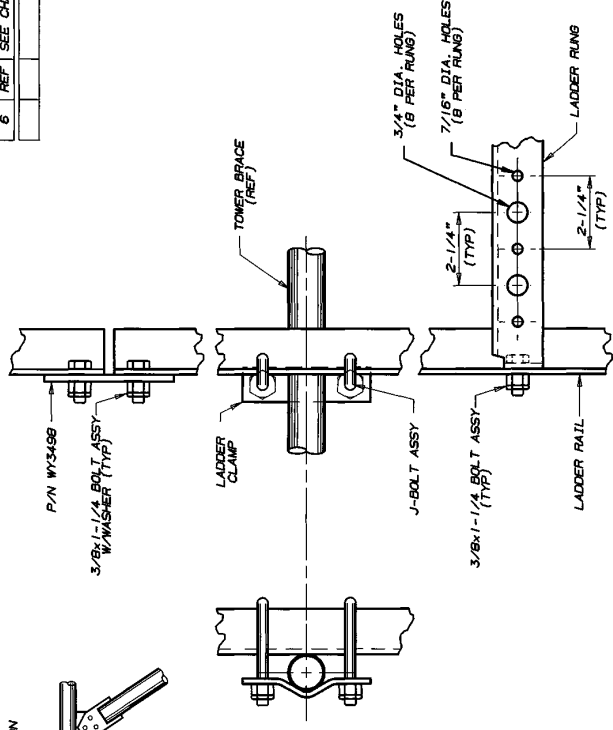
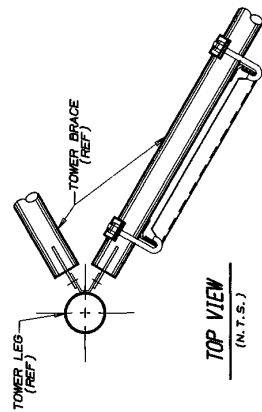
GENERAL NOTES

1. SPACE LADDER CLAMPS AS SHOWN.
2. THE W/6 LADDER MAY REQUIRE FIELD CUTTING TO FIT.
3. W/6 LADDER MAY BE MOVED HORIZONTALY FOR PROPER ALIGNMENT.
4. WASHERS ARE PROVIDED FOR ALL SLOTTED HOLES.
5. TOWER AS REQUIRED, MOUNTED INSIDE OR OUTSIDE OF TOWER.

W/6 LADDER MOUNTING CLAMP ASSEMBLIES

CLAMP ASSEMBLY P/N	TOWER BRACE SIZE (O.D.)	LADDER CLAMP P/N	DWG. NO.	QTY	J-BOLT P/N	DWG. NO.	QTY
WY3060A	1-1/2" x 3-3/8"	WY23	SK730352B	2	J444A	B2942A	4
WY3061A	2-7/8" x 1-1/2"	WY23	SK730352B	2	J51A	B2947	4
WY3062A	4" x 4-1/2"	WY24	SK730352B	2	J51A	B2947	4
WY3063A	5-9/16" x 4-1/2"	WY25	SK730356B	2	J51A	B2947	4
WY4569A	6-5/8" x 4-1/2"	WY4569	B631316	2	J51A	B2947	4

CLAMP ASSEMBLY ORDERING INFO
 ORDER 1 CLAMP ASSEMBLY (SEE BRACE SIZE) FOR EACH HORIZONTAL BRACE THAT THE W/6 LADDER CROSSES.



NOTE: IF CIRCULAR W/6 IS USED, THREADED ADAPTERS, PROVIDED BY OTHERS, MAY BE REQUIRED TO PERFECTLY ALIGN W/6'S ON LADDER.

No. Revision	Description	Date	Rev. By	Chd. By	App'd. By
1					

Drawn:	None	By:	WEB	Date:	10/26/90
Checked:		By:	WJ	Date:	12/26/90
App.:	Exp.:	By:		Date:	12/26/90
App.:	Series:	By:		Date:	12/26/90

R O H N

LADDER ASSY W/6 FACE MTD FOR SSMW TOWERS 8 HOLE 4" KD 2.25" O.C. 3/4" & 7/16" DIA.

DRAWING NO.: C901B29