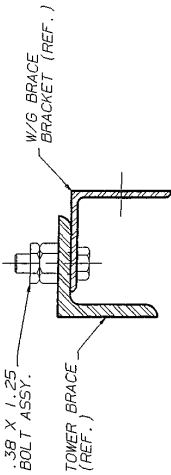




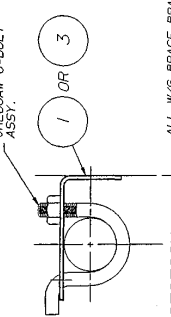
**ORDERING AND MOUNTING INFORMATION**

ORDER (1) ASSEMBLY FOR EACH TOP HORIZONTAL BRACE THAT W/G'S CROSS IN A SECTION.  
 ORDER (1) ASSEMBLY FOR EACH W/G BRACKET (1) DIAGONAL ASS'Y. FOR A 30° SECTION.  
 ORDER (1) W/G BRACKET (1) DIAGONAL ASS'Y. FOR A 45° SECTION.  
 ORDER (1) W/G BRACKET (1) DIAGONAL ASS'Y. FOR A 60° SECTION.  
 ORDER (1) W/G BRACKET (1) DIAGONAL ASS'Y. FOR A 75° SECTION.  
 ORDER (1) W/G BRACKET (1) DIAGONAL ASS'Y. FOR A 90° SECTION.  
 (1) W/G BRACKET (1) DIAGONAL ASS'Y. FOR A 30° SECTION.  
 (1) W/G BRACKET (1) DIAGONAL ASS'Y. FOR A 45° SECTION.  
 (1) W/G BRACKET (1) DIAGONAL ASS'Y. FOR A 60° SECTION.  
 (1) W/G BRACKET (1) DIAGONAL ASS'Y. FOR A 75° SECTION.  
 (1) W/G BRACKET (1) DIAGONAL ASS'Y. FOR A 90° SECTION.  
 REFER TO SECTION ASSEMBLY DRAWINGS FOR TOWER SECTION DETAILS.

NOTE:  
 THESE ASSEMBLIES ARE TO BE MOUNTED ON OUTSIDE FACE OF TOWER AS SHOWN OR  
 INSIDE FACE OF TOWER BRACE IS TURNED TO FACE INSIDE OF TOWER.  
 INSIDE FACE W/G BRACKET (1) DIAGONAL ASS'Y. (PROVIDED BY OTHERS) MAY BE  
 REQUIRED TO PERFECTLY ALIGN W/G'S ON BRACKETS.



SECTION B-B



SECTION A-A

**ASSY. P/N: WAF801211 FOR 1.5" DIA. TUBE HORIZONTALS**

ITEM	QUAN.	PART NO.	DESCRIPTION	DWG. NO.
1	1	KY2107	HORIZONTAL W/G BRACE BRACKET	B961874
2	2	JRL604W	U-BOLT ASSY. W/WASHER	AS10958

**ASSY. P/N: WAF801212 FOR 1.5" DIA. TUBE DIAGONALS**

ITEM	QUAN.	PART NO.	DESCRIPTION	DWG. NO.
3	1	KY2108	DIAGONAL W/G BRACE BRACKET	B961875
2	2	JRL604W	U-BOLT ASSY. W/WASHER	AS10958

**ASSY. P/N: WAF801213 FOR ANGLE HORIZONTALS**

ITEM	QUAN.	PART NO.	DESCRIPTION	DWG. NO.
5	1	KY2105	HORIZONTAL W/G BRACE BRACKET	B961870
6	2	2100056A	.38 X 1.25 BOLT ASSY.	C770404

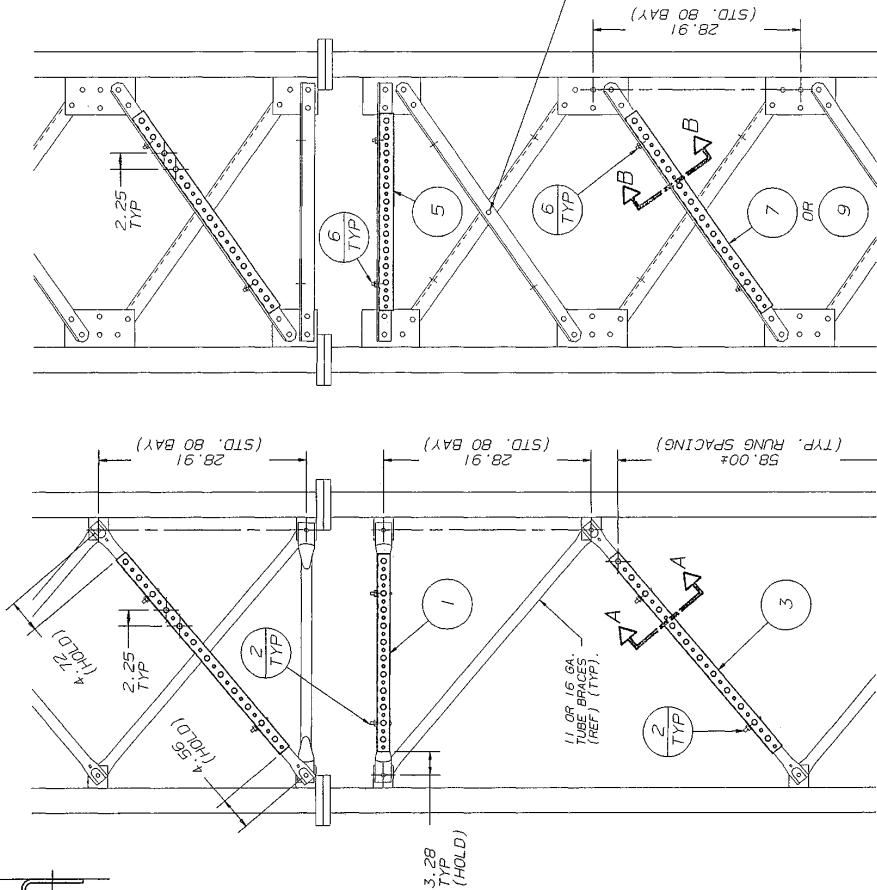
**ASSY. P/N: WAF801214 FOR (2) BOLT 2 X .25 DIAGONALS**

ITEM	QUAN.	PART NO.	DESCRIPTION	DWG. NO.
7	1	KY2104	DIAGONAL W/G BRACE BRACKET	B961869
6	2	2100056A	.38 X 1.25 BOLT ASSY.	C770404

**ASSY. P/N: WAF801215 FOR (1) BOLT 1.75 X .19 DIAG'S.**

ITEM	QUAN.	PART NO.	DESCRIPTION	DWG. NO.
9	1	KY2106	DIAGONAL W/G BRACE BRACKET	B961871
6	2	2100056A	.38 X 1.25 BOLT ASSY.	C770404

NOTE:  
 CENTER BOLT MUST BE INSTALLED  
 WITH NUT TOWARDS TOWER AXIS  
 ON X-BRACED SECTIONS.



TOWER SECTION

TOWER SECTION

No. Revision Description		Date		Title	
THIS DRAWING IS THE PROPERTY OF ROHN. IT IS NOT TO BE REPRODUCED, COPIED OR TRACED IN WHOLE OR IN PART WITHOUT OUR WRITTEN CONSENT.					
Scale:	None	By:	WAN	Date:	6/4/98
Drawn:	U	Checked:	U	App. Eng.:	751 6-12-78
App. Sales:	701	Eng. File:	6-17-75	DRAWING NO.: C961161	
			ROHN		
W/G BRACE BRACKET ASSEMBLY WITH (12) .44 & .75 DIA. HOLES FOR 80 TOWER TUBE & ANGLE BRACES					