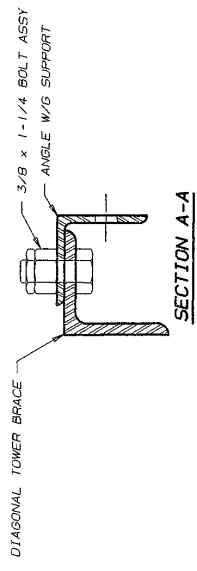


**W/G LADDER ORDERING & MOUNTING INFORMATION**

ORDER ONE (1) ASSEMBLY P/N WAF901521 FOR EACH DIAGONAL BRACE BAY THAT W/G'S CROSS IN A SECTION (I.E. S-WAF901521 FOR A 20' TOWER SECTION, S-WAF901521 FOR A 12' TOWER SECTION, ETC.) THIS ASSEMBLY MAY BE MOUNTED ON OUTSIDE OF TOWER AS SHOWN OR ON INSIDE AS REQUIRED

**NOTE: THIS ASSEMBLY IS NOT RECOMMENDED FOR USE WITH CIRCULAR W/G**

ASSEMBLY P/N WAF901521 BILL OF MATERIAL		
ITEM	QTY	PART NO. DESCRIPTION DWG NO.
1	1	NM490 ANGLE W/G SUPPORT B900955
2	2	Z100056A 3/8 x 1-1/4 BOLT ASSY C770404



R2	REPLACED NM495 WITH NM490	8/2/93	WKN	477	KS
R1	REVERSED TOWER BRACING	8/2/90	CSR	WOU	TS
No. <b>A</b> Revision Description					
		<b>A</b> Date	<b>A</b> Rev. By	<b>A</b> Crd. By	<b>A</b> App. By
THIS DRAWING IS THE PROPERTY OF ROHM. IT IS NOT TO BE REPRODUCED, COPIED OR TRACED IN WHOLE OR IN PART WITHOUT OUR WRITTEN CONSENT.					
Scale: NONE		By: CSR	Date: 2/15/90	Title: <b>R O H M</b>	
Drawn: WOU		Checked: TS	Date: 2/19/90	BRACE MOUNTED W/G SUPPORT ASSEMBLY FOR MODEL 90 TOWER (15 HOLES - 2-1/4\" O.C.)	
App. Eng.: JC		Site: JC	Date: 2/19/90	DRAWING NO.: C900802R2	