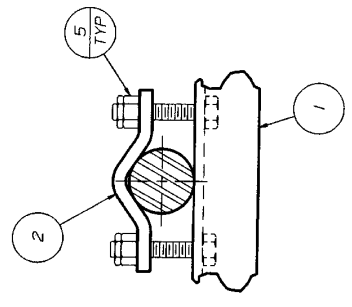
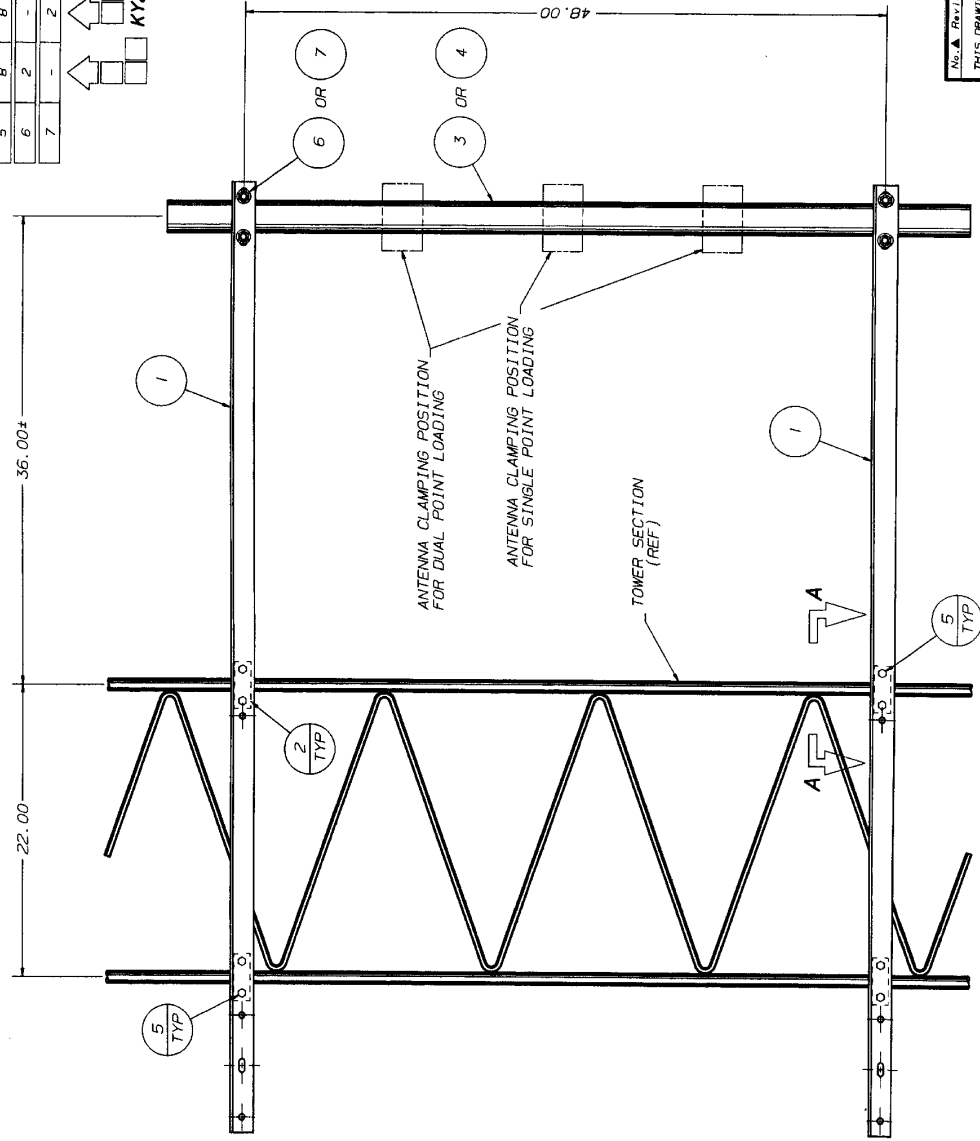
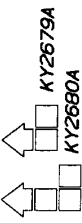




BILL OF MATERIAL				
ITEM	QUAN.	PART NO.	DESCRIPTION	DWG. NO.
1	2	KH275	MOUNTING ANGLE (L 1 1/2" X 1 1/2" X 1/2")	C991136
2	4	KH91	SADDLE CLAMP	B770214
3	1	KH275	MOUNTING PIPE (STD X 5'-0" LG)	B770160
4	-	KH275	MOUNTING PIPE (STD X 5'-0" LG)	B770160
5	8	2101768A	1/2" X 2 1/2" BOLT ASSY	C770404
6	2	JR83AW	3/4" U-BOLT ASSY W/WASHER	B651028
7	-	JR84AW	3/4" U-BOLT ASSY W/WASHER	B651028



SECTION A-A

NOTE: SIDE ARM MOUNTING ANGLE MUST BE LOCATED AS CLOSE AS POSSIBLE TO LEG/BRACE INTERSECTION

NOTE: THIS SIDE ARM IS DESIGNED FOR AN ALLOWABLE ANTENNA LOADING OF 200 LBS LATERAL THRUST

NOTE: OUTSTANDING LEG OF TOWER HAS BEEN OMITTED FOR CLARITY

No. Revision Description		Date		Rev. By		App. By	
THIS DRAWING IS THE PROPERTY OF ROHN. IT IS NOT TO BE REPRODUCED, COPIED OR TRACED IN WHOLE OR IN PART WITHOUT OUR WRITTEN CONSENT.							
Scale:	NAME	BY	DATE	ROHN			
Drawn:	WRF	6/26/99	3° SIDE ARM ASSY W/2" OR 2 1/2" MTG PIPE FOR 3WAST SECTIONS				
Checked:	HZ	7/8/99	ENG. NO.: C991134				
App. Eng.:	JZ	12/28/97	SHEET 1 OF 1				
Percent File:							