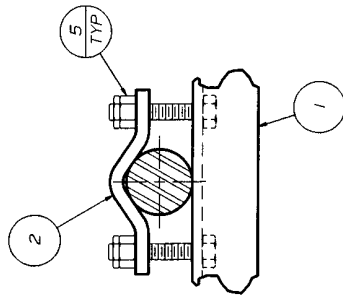
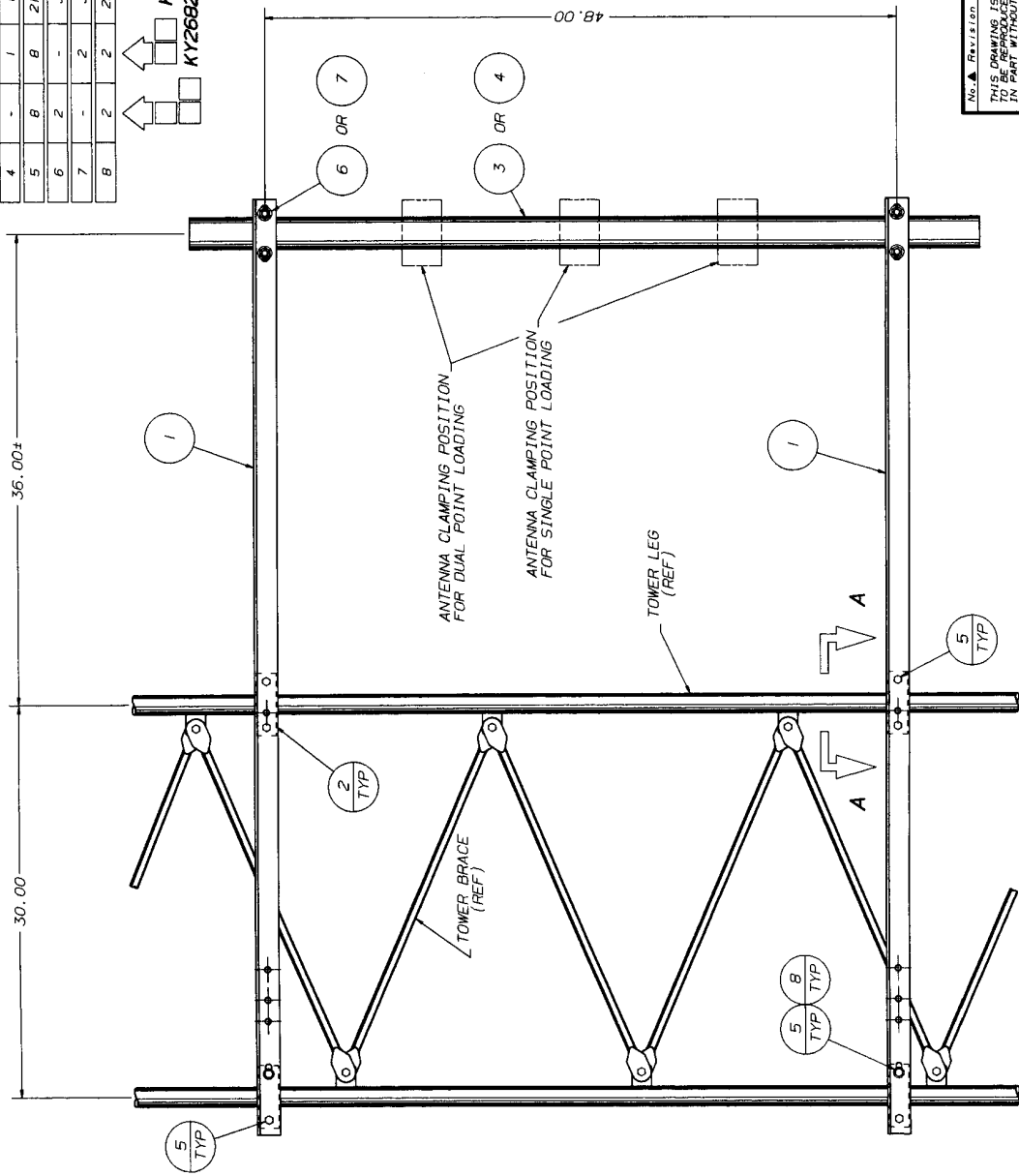
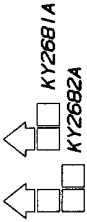




BILL OF MATERIAL				
ITEM	QUAN.	PART NO.	DESCRIPTION	DWG. NO.
1	2	KHSB7B	MOUNTING ANGLE (L 1 1/4" X 1 1/4" X 7/8")	C991135
2	4	D114	SADDLE CLAMP	B770214
3	1	KH275	MOUNTING PIPE (25TD X 5'-0" LG)	B770160
4	-	KH276	MOUNTING PIPE (25STD X 5'-0" LG)	B770160
5	8	2101766A	3/8" X 2 1/2" BOLT ASSY	C770404
6	2	JRB3AW	1/2" U-BOLT ASSY W/WASHER	B651028
7	2	JRB4AW	1/2" U-BOLT ASSY W/WASHER	B651028
8	2	2500086	WASHER FOR 3/8" BOLT	N/A



NOTE: SIDE ARM MOUNTING ANGLE MUST BE LOCATED AS CLOSE AS POSSIBLE TO LEG/BRACE INTERSECTION

NOTE: THIS SIDE ARM IS DESIGNED FOR AN ALLOWABLE ANTENNA LOADING OF 200 LBS LATERAL THRUST

NOTE: OUTSTANDING LEG OF TOWER HAS BEEN OMITTED FOR CLARITY

No. **▲** Revision Description **▲** Date **▲** Rev. By **▲** Crt By **▲** Appr By

THIS DRAWING IS THE PROPERTY OF ROHN. IT IS NOT TO BE REPRODUCED OR TRANSMITTED IN ANY FORM OR BY ANY MEANS, WITHOUT OUR WRITTEN CONSENT.

Scale:	NONE	By:	WF	Date:	6/29/99
Drawn:	WF	Checked:	JR	7/2/99	
App. Eng.:	JR	Parent File:	71	7/18/01	

ROHN

3" SIDE ARM ASSY W/2" OR 2 1/2" MTG PIPE FOR 5/8" SECTIONS

ENG. NO.: C991135

SHEET 1 OF 1

REV.