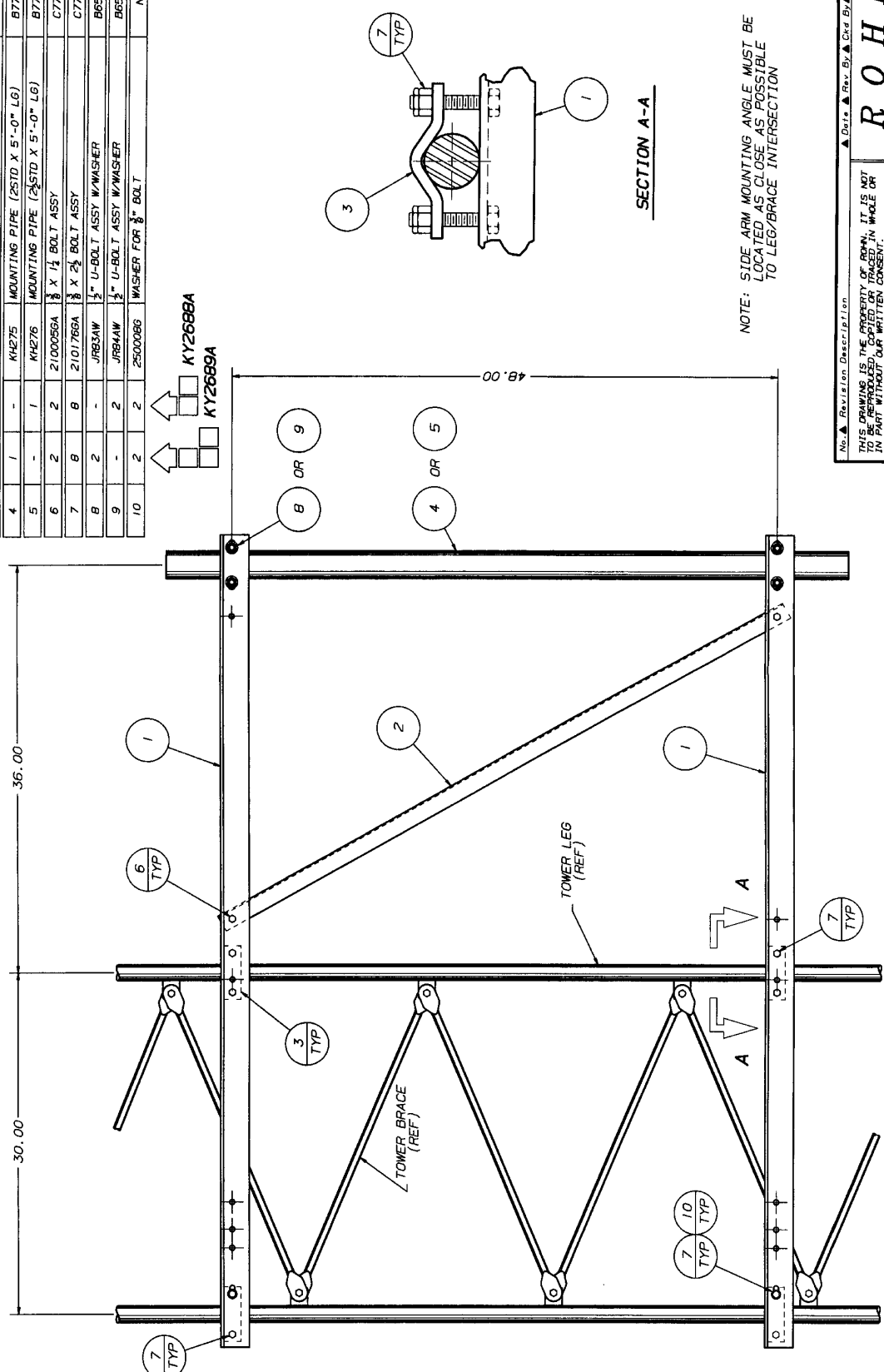




BILL OF MATERIAL				
ITEM	QTY	PART NO.	DESCRIPTION	DWG. NO.
1	2	KHEB14	MOUNTING ANGLE (L 2 1/2" X 2 1/2" X 1/2")	C971982
2	1	KHS723	SUPPORT ANGLE (L 1 1/2" X 1 1/2" X 1/2")	C971982
3	4	D114	SADDLE CLAMP	B770214
4	1	KH275	MOUNTING PIPE (STD X 5'-0" LG)	B770160
5	1	KH276	MOUNTING PIPE (STD X 5'-0" LG)	B770160
6	2	2100056A	1/2" X 1 1/4" BOLT ASSY	C770404
7	8	2101766A	1/2" X 2 1/2" BOLT ASSY	C770404
8	2	JRB3AW	1/2" U-BOLT ASSY W/WASHER	B651028
9	2	JRB4AW	1/2" U-BOLT ASSY W/WASHER	B651028
10	2	2500086	WASHER FOR 1/2" BOLT	N/A



NOTE: THIS SIDE ARM IS DESIGNED FOR AN ALLOWABLE ANTENNA LOADING OF 300 LBS LATERAL THRUST

NOTE: OUTSTANDING LEG OF TOWER HAS BEEN OMITTED FOR CLARITY

Revision Description: **ROHN**

THIS DRAWING IS THE PROPERTY OF ROHN. IT IS NOT TO BE REPRODUCED, COPIED OR TRACED IN WHOLE OR IN PART WITHOUT OUR WRITTEN CONSENT.

No.	Revision Description	Date	By	Appr. By
1				
2				
3				
4				
5				
6				
7				
8				
9				
10				

3" SIDE ARM ASSY W/2" OR 2 1/2" MTG PIPE FOR 5N5T SECTIONS

Eng. No.: C990773

Parent File: **HA** 3/11/99

Sheet: MOE By: WRF Date: 3/1/99

Drawn: WRF Date: 3/1/99

Checked: **JA** 3/10/99

App. Eng.: **JA** 3/11/99

Parent File: **HA** 3/11/99

SHEET 1 OF 1