



20' W/G LADDER SECTION BILL OF MATERIAL (M.10F93K0)

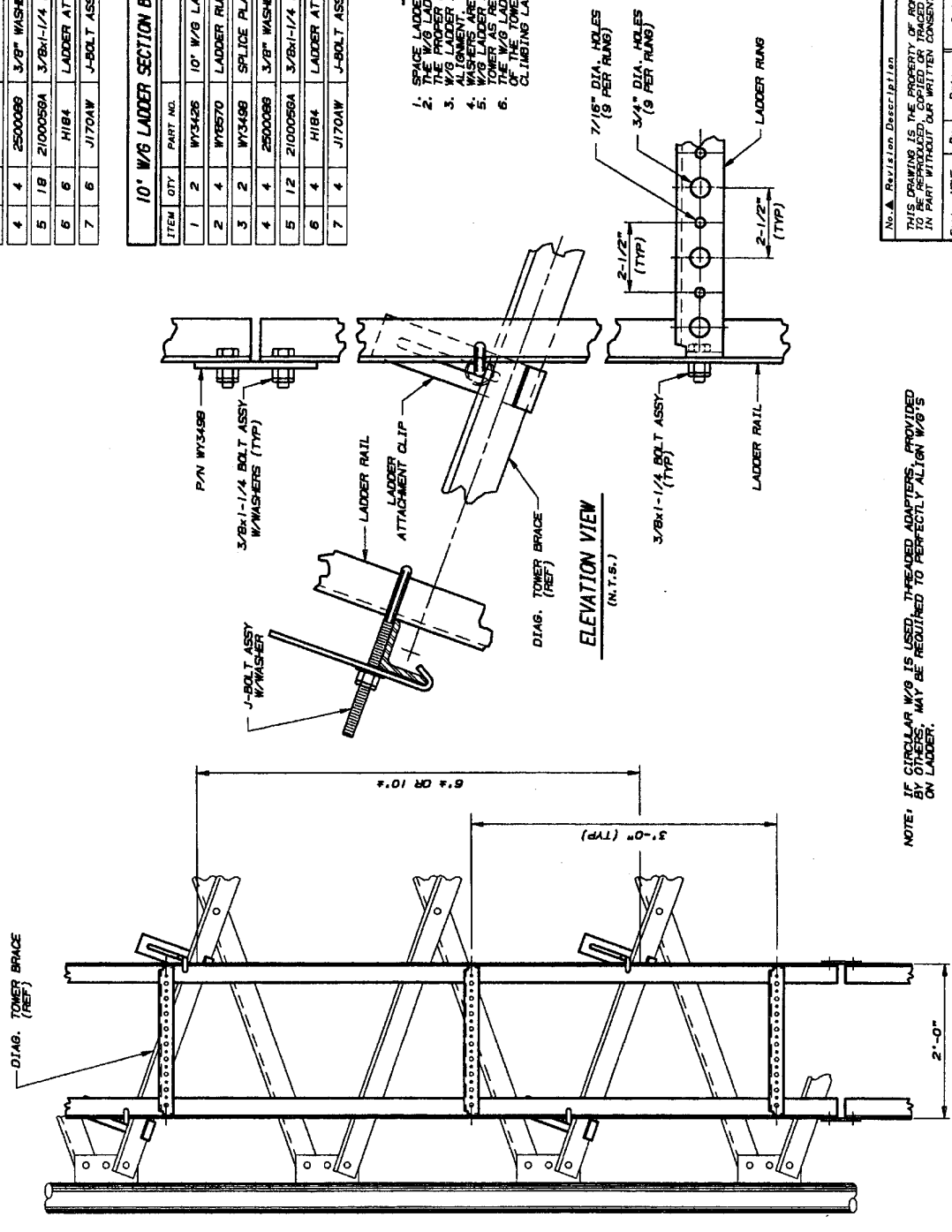
ITEM	QTY	PART NO.	DESCRIPTION	DWG NO.
1	2	WY3425	20' W/G LADDER RAIL	C940372
2	7	WY6570	LADDER RUNG (9 HOLE)	C991003
3	2	WY3498	SPLICE PLATE	B820888
4	4	2500088	3/8" WASHER	C770404
5	18	2100058A	3/8x1-1/4 BOLT ASSEMBLY	C770404
6	6	H184	LADDER ATTACHMENT CLIP	B991808
7	6	J170AW	J-BOLT ASSY W/WASHER	A991694

10' W/G LADDER SECTION BILL OF MATERIAL (M.10F93K0)

ITEM	QTY	PART NO.	DESCRIPTION	DWG NO.
1	2	WY3425	10' W/G LADDER RAIL	C940372
2	4	WY6570	LADDER RUNG (9 HOLE)	C991003
3	2	WY3498	SPLICE PLATE	B820888
4	4	2500088	3/8" WASHER	C770404
5	12	2100058A	3/8x1-1/4 BOLT ASSEMBLY	C770404
6	4	H184	LADDER ATTACHMENT CLIP	B991808
7	4	J170AW	J-BOLT ASSY W/WASHER	A991694

GENERAL NOTES

- 1: SPACE LADDER CLIPS AS SHOWN.
- 2: THE W/G LADDER MAY REQUIRE FIELD CUTTING TO THE PROPER LENGTH AFTER ASSEMBLY.
- 3: ALL CLIMBER MAY BE MOVED HORIZONTALLY FOR PROPER CLEARANCE.
- 4: WASHERS ARE PROVIDED FOR ALL SLOTTED HOLES.
- 5: W/G LADDER MAY BE MOUNTED INSIDE OR OUTSIDE OF THE W/G TOWER.
- 6: THE W/G LADDER MUST BE OFFSET FROM THE CENTER OF THE TOWER WHEN USED WITH A FACE MOUNTED CLIMBING LADDER FOR REQUIRED CLEARANCES.



No. **A** Revision Description
 Date: **A** Rev. By: **A** Crk. By: **A** App. By: **D**

THIS DRAWING IS THE PROPERTY OF ROHN. IT IS NOT TO BE REPRODUCED, COPIED OR TRACED IN WHOLE OR IN PART WITHOUT OUR WRITTEN CONSENT.

ROHN

LADDER ASSY W/G FACE MTD FOR SSV TOWERS 9' HOLE 3' RD 2.50" O.C. 3/4" & 7/16" DIA.

Scale: NONE	By: Data
Drawn: SRH 05/10/99	Checked: JOM 4-16-99
App. Eng.: JT 6-16-99	Eng. File: C991017
Parent File:	SHEET 1 OF 1

NOTE: IF CIRCULAR W/G IS USED, THREADED ADAPTERS, PROVIDED BY OTHERS, MAY BE REQUIRED TO PERFECTLY ALIGN W/G'S ON LADDER.