



20' W/6 LADDER SECTION BILL OF MATERIAL (ML20F123K0)

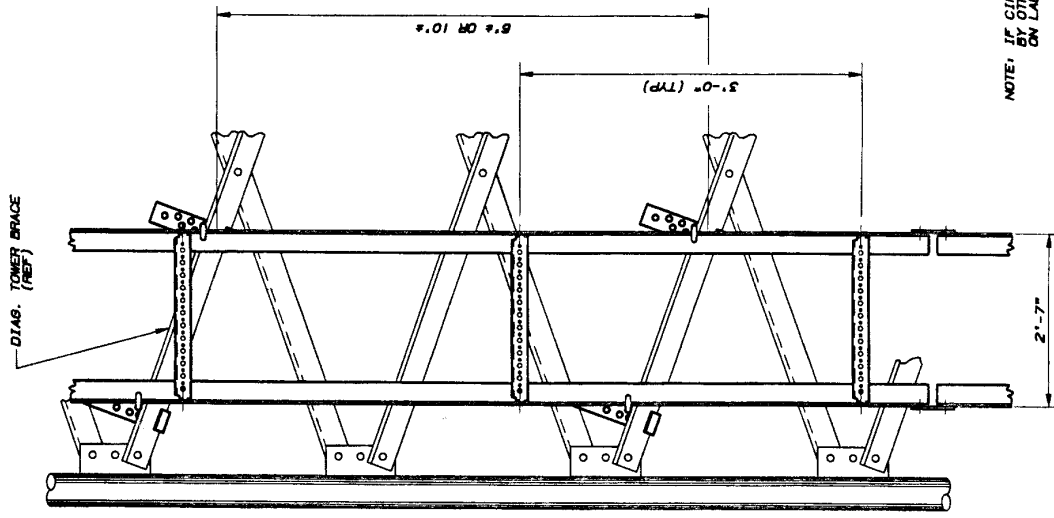
ITEM	QTY	PART NO.	DESCRIPTION	DWG NO.
1	2	WY3425	20' W/6 LADDER RAIL	CB40372
2	7	WY8571	LADDER RUNG (12 HOLE)	C991005
3	2	WY3498	SPLICE PLATE	B620989
4	4	2500069	3/8" WASHER	C770404
5	18	2100059A	3/8x1-1/4 BOLT ASSEMBLY	C770404
6	6	H1B4	LADDER ATTACHMENT CLIP	B991808
7	6	J170AW	J-BOLT ASSY W/WASHER	A991694

10' W/6 LADDER SECTION BILL OF MATERIAL (ML10F123K0)

ITEM	QTY	PART NO.	DESCRIPTION	DWG NO.
1	2	WY3426	10' W/6 LADDER RAIL	CB40372
2	4	WY8571	LADDER RUNG (12 HOLE)	C991005
3	2	WY3498	SPLICE PLATE	B620989
4	4	2500069	3/8" WASHER	C770404
5	12	2100059A	3/8x1-1/4 BOLT ASSEMBLY	C770404
6	4	H1B4	LADDER ATTACHMENT CLIP	B991808
7	4	J170AW	J-BOLT ASSY W/WASHER	A991694

GENERAL NOTES

1. SPACE LADDER CLIPS AS SHOWN. FIELD CUTTING TO THE PROPER LENGTH AFTER ASSEMBLY.
2. THE W/6 LADDER MAY REQUIRE FIELD CUTTING TO THE PROPER LENGTH AFTER ASSEMBLY.
3. ALL PARTS MUST BE MOVED HORIZONTALLY FOR PROPER ALIGNMENT.
4. WASHERS ARE PROVIDED FOR ALL SLOTTED HOLES.
5. W/6 LADDER MAY BE MOUNTED INSIDE OR OUTSIDE OF THE TOWER.
6. THE W/6 LADDER MUST BE OFFSET FROM THE CENTER OF THE TOWER WHEN USED WITH A FACE MOUNTED CLIMBING LADDER FOR REQUIRED CLEARANCES.



ELEVATION VIEW
(N.T.S.)

<p>REVISION</p> <p>No. Description</p> <p>1. CHGD GEOMETRY OF H1B4</p> <p>2. CHGD</p> <p>3. CHGD</p> <p>4. CHGD</p> <p>5. CHGD</p> <p>6. CHGD</p> <p>7. CHGD</p>	<p>DATE</p> <p>11M</p> <p>11M</p> <p>11M</p> <p>11M</p> <p>11M</p> <p>11M</p> <p>11M</p>	<p>BY</p> <p>BY</p> <p>BY</p> <p>BY</p> <p>BY</p> <p>BY</p> <p>BY</p>	<p>DATE</p> <p>DATE</p> <p>DATE</p> <p>DATE</p> <p>DATE</p> <p>DATE</p> <p>DATE</p>
<p>THIS DRAWING IS THE PROPERTY OF ROHN. IT IS NOT TO BE REPRODUCED, COPIED, OR TRANSMITTED IN ANY FORM OR BY ANY MEANS, WITHOUT OUR WRITTEN CONSENT.</p>			
<p>Scale: NONE</p> <p>Drawn: SRH 05/10/99</p> <p>Checked: JCM 6/16/99</p> <p>App. Eng.: TS 6/16/99</p> <p>Percent Filed:</p>		<p>ROHN</p> <p>LADDER ASSY W/G FACE MTD FOR SSV TOWERS 12 HOLE 3' KD 2.50" O.C. 3/4" & 7/16" DIA.</p> <p>ENG. FILE: C991007</p> <p>101</p> <p>SHEET 1 OF 1</p> <p>REV</p>	

NOTE: IF CIRCULAR W/6 IS USED, THREADED ADAPTERS PROVIDED BY OTHERS, MAY BE REQUIRED TO PERFECTLY ALIGN W/6'S ON LADDER.