

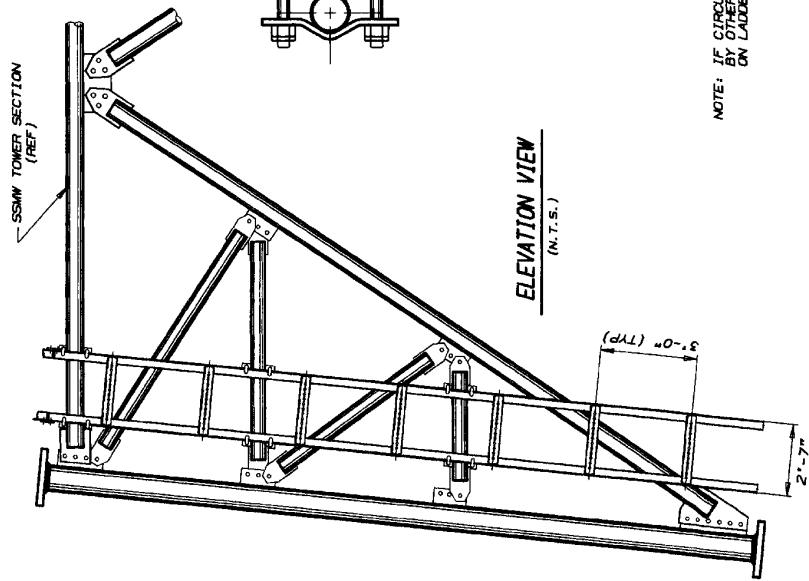
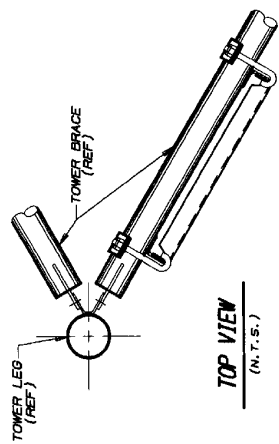


W/6 LADDER MOUNTING CLAMP ASSEMBLIES

CLAMP ASSEMBLY P/N	TOWER BRACE SIZE (O.D.)	LADDER CLAMP		J-BOLT			
		P/N	DWG. NO.	P/N	DWG. NO.		
WY3080A	1-1/2" x 2-3/8"	WY23	SK7303528	2	J444A	B2942A	4
WY3081A	2-7/8" x 3-1/2"	WY23	SK7303528	2	J51A	B2947	4
WY3082A	4" x 4-1/2"	WY24	SK7303528	2	J51A	B2947	4
WY3083A	5-9/16"	WY25	SK7303568	2	J51A	B2947	4
WY4569A	6-5/8"	WY456B	BB31316	2	J51A	B2947	4

CLAMP ASSEMBLY ORDERING INFO

ORDER 1 CLAMP ASSEMBLY (SEE BRACE SIZE) FOR EACH HORIZONTAL BRACE THAT THE W/6 LADDER CROSSES.



20' W/6 LADDER SECTION BILL OF MATERIAL (W/20F123K01)

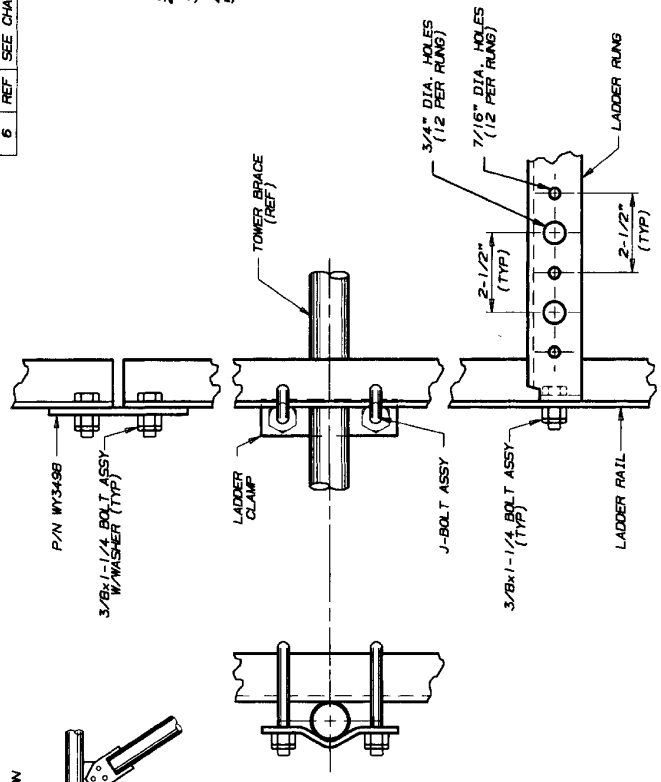
ITEM	QTY	PART NO.	DESCRIPTION	DWG. NO.
1	2	WY3426	20' W/6 LADDER RAIL	CB40372
2	7	WY8571	LADDER RUNG (12 HOLE)	C991005
3	2	WY3498	SPLICE PLATE	BB20868
4	4	2500086	3/8" WASHER	C770404
5	18	2100056A	3/8"x1-1/4" BOLT ASSEMBLY	C770404
6	REF	SEE CHART	MOUNTING CLAMP ASSY	SEE CHART

10' W/6 LADDER SECTION BILL OF MATERIAL (W/10F123K01)

ITEM	QTY	PART NO.	DESCRIPTION	DWG. NO.
1	2	WY3426	10' W/6 LADDER RAIL	CB40372
2	4	WY8571	LADDER RUNG (12 HOLE)	C991005
3	2	WY3498	SPLICE PLATE	BB20868
4	4	2500086	3/8" WASHER	C770404
5	12	2100056A	3/8"x1-1/4" BOLT ASSEMBLY	C770404
6	REF	SEE CHART	MOUNTING CLAMP ASSY	SEE CHART

GENERAL NOTES

1. SPACE LADDER CLAMPS AS SHOWN.
2. THE W/6 LADDER MAY REQUIRE FIELD CUTTING TO FIT.
3. W/6 LADDER MUST BE MOUNTED HORIZONTALLY FOR PROPER ALIGNMENT.
4. WASHERS ARE PROVIDED FOR ALL SLOTTED HOLES.
5. TOWER BRACE MUST BE MOUNTED INSIDE OR OUTSIDE OF TOWER AS REQUIRED.



NOTE: IF CIRCULAR W/6 IS USED, THREADED ADAPTERS, PROVIDED BY OTHERS, MAY BE REQUIRED TO PERFECTLY ALIGN W/6'S ON LADDER.

RI	REVISED PART NUMBER	7-28-99	JDM	1/12	TS
No. ▲ Revision Description					
Date ▲ Rev. By ▲ Chg. By ▲ App. By					
THIS DRAWING IS THE PROPERTY OF ROHN. IT IS NOT TO BE REPRODUCED OR TRANSMITTED IN ANY FORM OR BY ANY MEANS, WITHOUT OUR WRITTEN CONSENT.					
Scale:	NONE	By	Date	R O H N	
Drawn:	SRH	JDM	05/10/99	LADDER ASSY W/6 FACE MTD FOR SSWW TOWERS 1/2 HOLE 3" KD 2.50" O.C. 3/4" & 7/16" DIA.	
Checked:	JDM	JDM	5-17-99	DWG. NO.: C991019	
App. Eng.:	TS	TS	6-15-99	ENG. FILE:	
Parent File:	SHEET 1 OF 1				