



20' W/G LADDER SECTION BILL OF MATERIAL (M.20'124KD1)

ITEM	QTY	PART NO.	DESCRIPTION	DWG NO.
1	2	WY3425	20' W/G LADDER RAIL	C840372
2	5	WY8571	LADDER RUNG (12 HOLE)	C991005
3	2	WY3498	SPLICE PLATE	B820868
4	4	2500086	3/8" WASHER	C770404
5	14	2100056A	3/8x1-1/4 BOLT ASSEMBLY	C770404
6	REF	SEE CHART	MOUNTING CLAMP ASSY	SEE CHART

10' W/G LADDER SECTION BILL OF MATERIAL (M.10'124KD1)

ITEM	QTY	PART NO.	DESCRIPTION	DWG NO.
1	2	WY3425	10' W/G LADDER RAIL	C840372
2	3	WY8571	LADDER RUNG (12 HOLE)	C991005
3	2	WY3498	SPLICE PLATE	B820868
4	4	2500086	3/8" WASHER	C770404
5	10	2100056A	3/8x1-1/4 BOLT ASSEMBLY	C770404
6	REF	SEE CHART	MOUNTING CLAMP ASSY	SEE CHART

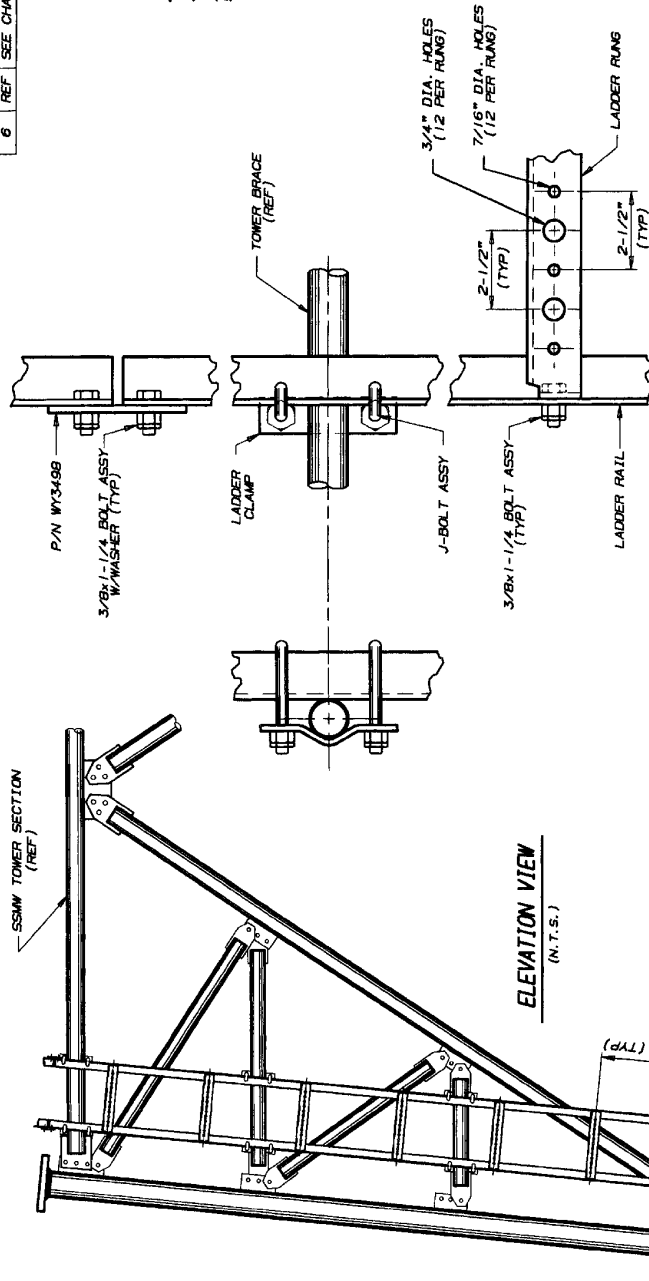
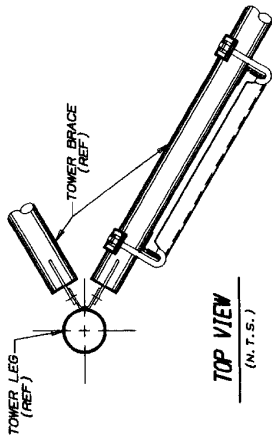
GENERAL NOTES

1. SPACE LADDER CLAMPS AS SHOWN.
2. THE W/G LADDER MAY REQUIRE FIELD CUTTING TO PROPER LENGTH AFTER ASSEMBLY.
3. W/G PROPER LENGTH AFTER ASSEMBLY.
4. WASHERS ARE PROVIDED FOR ALL SLOTTED HOLES.
5. W/G LADDER MAY BE MOUNTED INSIDE OR OUTSIDE OF TOWER AS REQUIRED.

W/G LADDER MOUNTING CLAMP ASSEMBLIES

CLAMP ASSEMBLY P/N	TOWER BRACE SIZE (O.D.)	LADDER CLAMP		J-BOLT			
		P/N	QTY	P/N	QTY		
WY3080A	1-1/2"-3-3/8"	WY23	SK730352B	2	J44AA	B2942A	4
WY3081A	2-7/8"-3-1/2"	WY23	SK730352B	2	J51A	B2947	4
WY3082A	4"-4-1/2"	WY24	SK730352B	2	J51A	B2947	4
WY3083A	5-9/16"	WY25	SK730352B	2	J51A	B2947	4
WY4558A	6-5/8"	WY4558	B631316	2	J51A	B2947	4

CLAMP ASSEMBLY ORDERING INFO
 ORDER / CLAMP ASSEMBLY (SEE BRACE SIZE) FOR EACH HORIZONTAL BRACE THAT THE W/G LADDER CROSSES.



NOTE: IF CIRCULAR W/G IS USED, THREADED ADAPTERS PROVIDED BY OTHERS, MAY BE REQUIRED TO PERFECTLY ALIGN W/G'S ON LADDER.

RI REVISED PART NUMBER 7-28-99 JDM AR TS
 No. Revision Description
 ▲ Date ▲ Rev. By ▲ Chg. By ▲ App. By

THIS DRAWING IS THE PROPERTY OF ROHN. IT IS NOT TO BE REPRODUCED, COPIED OR TRACED IN WHOLE OR IN PART WITHOUT OUR WRITTEN CONSENT.

Scale: NONE By Date
 Drawn: SRH 05/11/99
 Checked: JDM 5-12-99
 App. Eng.: TS 6-15-99

Parent File: DWG. NO.: C991020
 SHEET 1 OF 1 REV.

ROHN
 LADDER ASSY W/G FACE MTD FOR
 SSMW TOWERS 1/2 HOLE 4" KD
 2.50" O.C. 3/4" & 7/16" DIA.