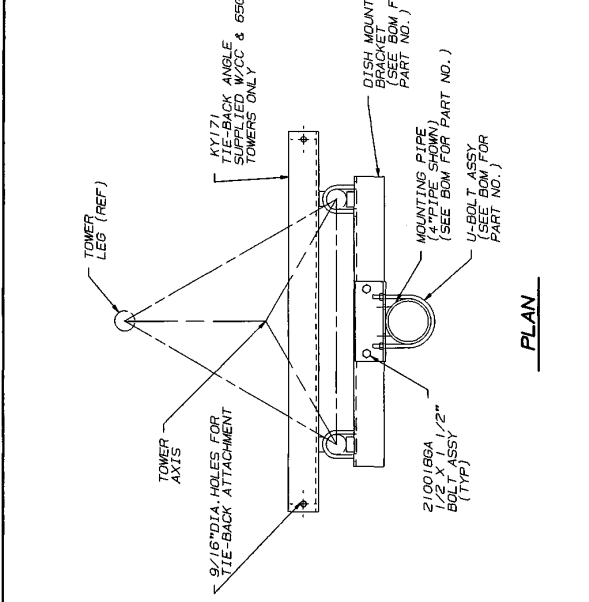


ELEVATION



PLAN

BILL OF MATERIALS				
ASSY NO.	PART NO. QTY	DESCRIPTION	DWG NO.	
DM2562	KY1550	2	DISH MOUNT BRACKET	B881437
	KH275	1	MOUNTING PIPE 2"STDx5'	B770160
	KY1549	2	MOUNTING CLIP ANGLE	B881436
	2100186A	4	BOLT ASSY 1/2 X 1 1/2"	C770404
	JR65A	8	U-BOLT ASSY 3/8"	B651028
	JR61A	4	U-BOLT ASSY 3/8"	B651028
	KY1550	2	DISH MOUNT BRACKET	B881437
	KH279	1	MOUNTING PIPE 4"STDx5'	B770160
	KY1549	2	MOUNTING CLIP ANGLE	B881436
	2100186A	4	BOLT ASSY 1/2 X 1 1/2"	C770404
JR65A	8	U-BOLT ASSY 3/8"	B651028	
JR63A	4	U-BOLT ASSY 3/8"	B651028	
DM254	KY1550	2	DISH MOUNT BRACKET	B881437
	KH275	1	MOUNTING PIPE 2"STDx5'	B770160
	KY1549	2	MOUNTING CLIP ANGLE	B881436
	2100186A	4	BOLT ASSY 1/2 X 1 1/2"	C770404
	JR65A	8	U-BOLT ASSY 3/8"	B651028
	JR61A	4	U-BOLT ASSY 3/8"	B651028
	KY1550	2	DISH MOUNT BRACKET	B881437
	KH279	1	MOUNTING PIPE 4"STDx5'	B770160
	KY1549	2	MOUNTING CLIP ANGLE	B881436
	2100186A	4	BOLT ASSY 1/2 X 1 1/2"	C770404
JR65A	8	U-BOLT ASSY 3/8"	B651028	
JR63A	4	U-BOLT ASSY 3/8"	B651028	
DM4562	KY1550	2	DISH MOUNT BRACKET	B881437
	KH275	1	MOUNTING PIPE 2"STDx5'	B770160
	KY1549	2	MOUNTING CLIP ANGLE	B881436
	2100186A	4	BOLT ASSY 1/2 X 1 1/2"	C770404
	JR65A	8	U-BOLT ASSY 3/8"	B651028
	JR61A	4	U-BOLT ASSY 3/8"	B651028
	KY1550	2	DISH MOUNT BRACKET	B881437
	KH279	1	MOUNTING PIPE 4"STDx5'	B770160
	KY1549	2	MOUNTING CLIP ANGLE	B881436
	2100186A	4	BOLT ASSY 1/2 X 1 1/2"	C770404
JR65A	8	U-BOLT ASSY 3/8"	B651028	
JR63A	4	U-BOLT ASSY 3/8"	B651028	
DM454	KY1550	2	DISH MOUNT BRACKET	B881437
	KH275	1	MOUNTING PIPE 2"STDx5'	B770160
	KY1549	2	MOUNTING CLIP ANGLE	B881436
	2100186A	4	BOLT ASSY 1/2 X 1 1/2"	C770404
	JR65A	8	U-BOLT ASSY 3/8"	B651028
	JR61A	4	U-BOLT ASSY 3/8"	B651028
	KY1550	2	DISH MOUNT BRACKET	B881437
	KH279	1	MOUNTING PIPE 4"STDx5'	B770160
	KY1549	2	MOUNTING CLIP ANGLE	B881436
	2100186A	4	BOLT ASSY 1/2 X 1 1/2"	C770404
JR65A	8	U-BOLT ASSY 3/8"	B651028	
JR63A	4	U-BOLT ASSY 3/8"	B651028	
DM5562	KY1550	2	DISH MOUNT BRACKET	B881437
	KH275	1	MOUNTING PIPE 2"STDx5'	B770160
	KY1549	2	MOUNTING CLIP ANGLE	B881436
	2100186A	4	BOLT ASSY 1/2 X 1 1/2"	C770404
	JR65A	8	U-BOLT ASSY 3/8"	B651028
	JR61A	4	U-BOLT ASSY 3/8"	B651028
	KY1550	2	DISH MOUNT BRACKET	B881437
	KH279	1	MOUNTING PIPE 4"STDx5'	B770160
	KY1549	2	MOUNTING CLIP ANGLE	B881436
	2100186A	4	BOLT ASSY 1/2 X 1 1/2"	C770404
JR65A	8	U-BOLT ASSY 3/8"	B651028	
JR63A	4	U-BOLT ASSY 3/8"	B651028	
DM554	KY1550	2	DISH MOUNT BRACKET	B881437
	KH275	1	MOUNTING PIPE 2"STDx5'	B770160
	KY1549	2	MOUNTING CLIP ANGLE	B881436
	2100186A	4	BOLT ASSY 1/2 X 1 1/2"	C770404
	JR65A	8	U-BOLT ASSY 3/8"	B651028
	JR61A	4	U-BOLT ASSY 3/8"	B651028
	KY1550	2	DISH MOUNT BRACKET	B881437
	KH279	1	MOUNTING PIPE 4"STDx5'	B770160
	KY1549	2	MOUNTING CLIP ANGLE	B881436
	2100186A	4	BOLT ASSY 1/2 X 1 1/2"	C770404
JR65A	8	U-BOLT ASSY 3/8"	B651028	
JR63A	4	U-BOLT ASSY 3/8"	B651028	
DMJ2	KY1552	2	DISH MOUNT BRACKET	B881440
	KH275	1	MOUNTING PIPE 2"STDx5'	B770160
	KY1549	2	MOUNTING CLIP ANGLE	B881436
	2100186A	4	BOLT ASSY 1/2 X 1 1/2"	C770404
	JR65A	8	U-BOLT ASSY 3/8"	B651028
	JR61A	4	U-BOLT ASSY 3/8"	B651028
	KY1552	2	DISH MOUNT BRACKET	B881440
	KH279	1	MOUNTING PIPE 4"STDx5'	B770160
	KY1549	2	MOUNTING CLIP ANGLE	B881436
	2100186A	4	BOLT ASSY 1/2 X 1 1/2"	C770404
JR65A	8	U-BOLT ASSY 3/8"	B651028	
JR63A	4	U-BOLT ASSY 3/8"	B651028	
DMJ4	KY1552	2	DISH MOUNT BRACKET	B881440
	KH275	1	MOUNTING PIPE 2"STDx5'	B770160
	KY1549	2	MOUNTING CLIP ANGLE	B881436
	2100186A	4	BOLT ASSY 1/2 X 1 1/2"	C770404
	JR65A	8	U-BOLT ASSY 3/8"	B651028
	JR61A	4	U-BOLT ASSY 3/8"	B651028
	KY1552	2	DISH MOUNT BRACKET	B881440
	KH279	1	MOUNTING PIPE 4"STDx5'	B770160
	KY1549	2	MOUNTING CLIP ANGLE	B881436
	2100186A	4	BOLT ASSY 1/2 X 1 1/2"	C770404
JR65A	8	U-BOLT ASSY 3/8"	B651028	
JR63A	4	U-BOLT ASSY 3/8"	B651028	

ASSY NO.	PART NO.	QTY	DESCRIPTION	DWG NO.
DM654	KY1555	2	DISH MOUNT BRACKET	B881440
	KH279	1	MOUNTING PIPE 4"STDx5'	B770160
	KY1549	2	MOUNTING CLIP ANGLE	B881436
	2100186A	4	BOLT ASSY 1/2 X 1 1/2"	C770404
	JR60A	8	U-BOLT ASSY 3/8"	B651028
	JR63A	4	U-BOLT ASSY 3/8"	B651028
	2500086	16	FLAT WASHERS 3/8"	N/A
	KY171	1	TIE-BACK ANGLE	B881440
	KH279	1	MOUNTING PIPE 4"STDx5'	B770160
	KY1549	2	MOUNTING CLIP ANGLE	B881436
DM654TB	2100186A	4	BOLT ASSY 1/2 X 1 1/2"	C770404
	JR60A	12	U-BOLT ASSY 3/8"	B651028
	JR63A	4	U-BOLT ASSY 3/8"	B651028
	2500086	24	FLAT WASHERS 3/8"	N/A
	KY1555	2	DISH MOUNT BRACKET	B881440
	KH279	1	MOUNTING PIPE 4"STDx5'	B770160
	KY1549	2	MOUNTING CLIP ANGLE	B881436
	2100186A	4	BOLT ASSY 1/2 X 1 1/2"	C770404
	JR60A	8	U-BOLT ASSY 3/8"	B651028
	JR63A	4	U-BOLT ASSY 3/8"	B651028
DMCC4	KY1555	2	DISH MOUNT BRACKET	B881440
	KH279	1	MOUNTING PIPE 4"STDx5'	B770160
	KY1549	2	MOUNTING CLIP ANGLE	B881436
	2100186A	4	BOLT ASSY 1/2 X 1 1/2"	C770404
	JR60A	8	U-BOLT ASSY 3/8"	B651028
	JR63A	4	U-BOLT ASSY 3/8"	B651028
	2500086	16	FLAT WASHERS 3/8"	N/A
	KY1555	2	DISH MOUNT BRACKET	B881440
	KY171	1	TIE-BACK ANGLE	B760806
	KH279	1	MOUNTING PIPE 4"STDx5'	B770160
DMCC4TB	2100186A	4	BOLT ASSY 1/2 X 1 1/2"	C770404
	JR60A	12	U-BOLT ASSY 3/8"	B651028
	JR63A	4	U-BOLT ASSY 3/8"	B651028
	2500086	24	FLAT WASHERS 3/8"	N/A
	KY1555	2	DISH MOUNT BRACKET	B881440
	KY171	1	TIE-BACK ANGLE	B760806
	KH279	1	MOUNTING PIPE 4"STDx5'	B770160
	2100186A	4	BOLT ASSY 1/2 X 1 1/2"	C770404
	JR60A	12	U-BOLT ASSY 3/8"	B651028
	JR63A	4	U-BOLT ASSY 3/8"	B651028

GENERAL NOTES

- DISH MOUNT SUPPLIED WITH 4"STD (4 1/2"O.D.) OR 2"STD (2 3/8"O.D.) MOUNTING PIPE. (CC & 656 TOWER SUPPLIED WITH 4"STD MOUNTING PIPE ONLY.)
- DISH MOUNT BRACKETS AND TIE-BACK ANGLE MAY BE MOUNTED ON FACES OTHER THAN SHOWN PER ORIENTATION REQUIREMENTS.
- DISH TIE-BACK STOUT (BY OTHERS) MUST BE AS CLOSE TO PERPENDICULAR AS POSSIBLE TO DISH FACE.
- FLAT WASHERS ARE PROVIDED FOR ALL SLOTTED HOLES.
- FABRICATION DRAWINGS, IF REFERENCED, ARE FOR SHOP USE ONLY.
- PAL NUTS ARE PROVIDED FOR ALL U-BOLTS /AND BOLTS (SEE DWS NOT 4750.351)
- MOUNTING BRACKETS MUST BE LOCATED AS CLOSE AS POSSIBLE TO LEG-BRACE INTERSECTION.

REV. TO: NO. 10	REV. TO: NO. 10	REV. TO: NO. 10	REV. TO: NO. 10	REV. TO: NO. 10	REV. TO: NO. 10	REV. TO: NO. 10	REV. TO: NO. 10	REV. TO: NO. 10	REV. TO: NO. 10
REV. TO: NO. 10	REV. TO: NO. 10	REV. TO: NO. 10	REV. TO: NO. 10	REV. TO: NO. 10	REV. TO: NO. 10	REV. TO: NO. 10	REV. TO: NO. 10	REV. TO: NO. 10	REV. TO: NO. 10
REV. TO: NO. 10	REV. TO: NO. 10	REV. TO: NO. 10	REV. TO: NO. 10	REV. TO: NO. 10	REV. TO: NO. 10	REV. TO: NO. 10	REV. TO: NO. 10	REV. TO: NO. 10	REV. TO: NO. 10
REV. TO: NO. 10	REV. TO: NO. 10	REV. TO: NO. 10	REV. TO: NO. 10	REV. TO: NO. 10	REV. TO: NO. 10	REV. TO: NO. 10	REV. TO: NO. 10	REV. TO: NO. 10	REV. TO: NO. 10
REV. TO: NO. 10	REV. TO: NO. 10	REV. TO: NO. 10	REV. TO: NO. 10	REV. TO: NO. 10	REV. TO: NO. 10	REV. TO: NO. 10	REV. TO: NO. 10	REV. TO: NO. 10	REV. TO: NO. 10
REV. TO: NO. 10	REV. TO: NO. 10	REV. TO: NO. 10	REV. TO: NO. 10	REV. TO: NO. 10	REV. TO: NO. 10	REV. TO: NO. 10	REV. TO: NO. 10	REV. TO: NO. 10	REV. TO: NO. 10
REV. TO: NO. 10	REV. TO: NO. 10	REV. TO: NO. 10	REV. TO: NO. 10	REV. TO: NO. 10	REV. TO: NO. 10	REV. TO: NO. 10	REV. TO: NO. 10	REV. TO: NO. 10	REV. TO: NO. 10
REV. TO: NO. 10	REV. TO: NO. 10	REV. TO: NO. 10	REV. TO: NO. 10	REV. TO: NO. 10	REV. TO: NO. 10	REV. TO: NO. 10	REV. TO: NO. 10	REV. TO: NO. 10	REV. TO: NO. 10
REV. TO: NO. 10	REV. TO: NO. 10	REV. TO: NO. 10	REV. TO: NO. 10	REV. TO: NO. 10	REV. TO: NO. 10	REV. TO: NO. 10	REV. TO: NO. 10	REV. TO: NO. 10	REV. TO: NO. 10
REV. TO: NO. 10	REV. TO: NO. 10	REV. TO: NO. 10	REV. TO: NO. 10	REV. TO: NO. 10	REV. TO: NO. 10	REV. TO: NO. 10	REV. TO: NO. 10	REV. TO: NO. 10	REV. TO: NO. 10

R O H N

DISH MOUNT ASSEMBLY FOR MODEL NO S 25, 45, 55, J, 65 & C TOWERS

DRAWING NO. C760796 R5