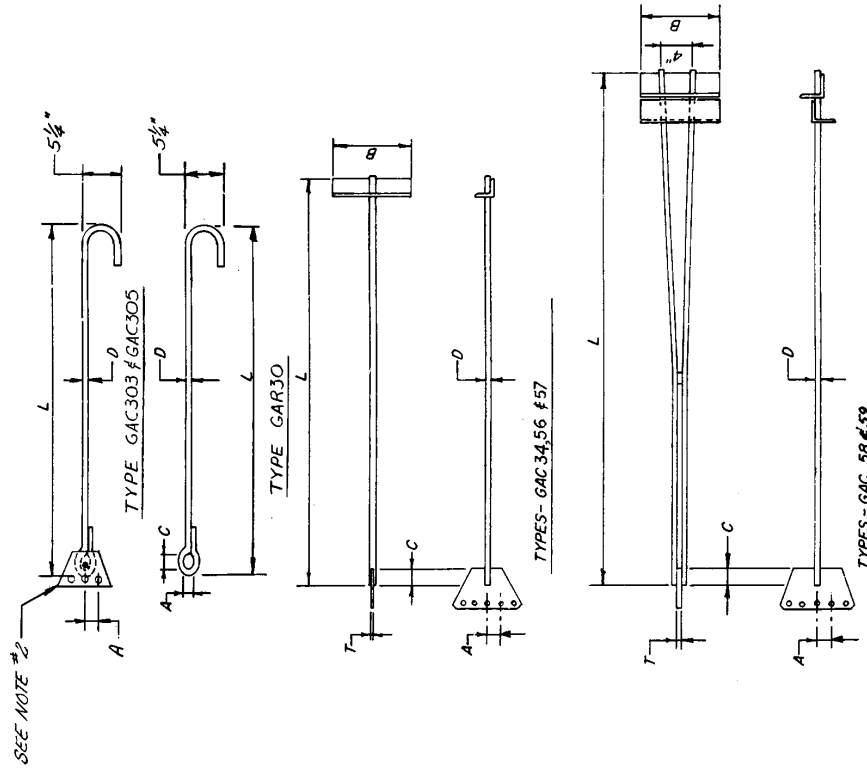




**ANCHOR ROD DATA**

PART NUMBER	EQUALIZER PLATE TYPE	DIMENSIONS IN INCHES							WEIGHT-LBS.	ALLOWABLE LOAD LBS. *
		L	A	B	C	D	T			
GAC 30	EYE	84	1		2	5/8			9	7,330
GAC 303	EE	84	2			5/8	3/16		13	7,330
GAC 305	EE	84	2			5/8	3/16		14	7,330
GAC 34 55 TOP	EJ	84	2	12	2 1/2	3/4		3/8	25	17,670
GAC 56 55 TOP	EJ	120	2 1/2	12	3	1 1/4		1/2	65	49,060
GAC 57 55 TOP	EJ	168	3	12	4	1 1/4		3/4	125	64,000
GAC 58 55 TOP	EJ	192	4	12	6	1 1/4		1	220	98,100
GAC 59 55 TOP	EJ	240	4	18	6	1 1/4		1	310	129,700



**ANCHOR ROD DETAILS**

\* INCLUDES 33 1/3% INCREASE IN ALLOWABLE STRESSES

- 4) TYPE - EJ EQUALIZER PLATES ARE USED WITH EYE & JAW TURNBUCKLES
- 3) TYPE - EE EQUALIZER PLATES ARE SUPPLIED IN PAIRS FOR EYE & EYE TURNBUCKLES
- 2) PART NO. SUFFIXES - 1, 3, 5 DENOTES - 1, 3 OR 5 HOLES IN PLATES
- 1) TYPE GAC303 RODS ARE SUPPLIED WITH TYPE EP25343 EQUALIZER PLATES (AS IS TYPE GAC30 ROD)

NO.	DESCRIPTION	REVISIONS	DATE	BY
1/10	ROD "TOP" TO PART NO.		11-23-95	ROD
R9	REMOVED GAR25, GAC233, GAC255 ANC RODS		1-17-94	RHB
R8	REV. EA FROM 3 HOLE TO 5 HOLE		7-31-91	CS
R7	REMOVED 5/16 DIA. HOLE		2-12-90	FM
R6	DEL. A-RODS & REV. CAPACITIES		3-17-88	FM
R5	ADD PIN GAR 30, GAC303 & GAC305		5-22-77	FM
R4	ALLOWABLE LOAD WAS LOAD CAPACITY #1000		12-30-60	FS
R3	REV. GAR 25 & GAC 25		2-16-53	FM
R2	A DIMENSION WAS 2"		9-16-52	GS
R1	REVISED 57 ROD D. DIM. & CAPACITY		6-11-71	FS
D	DELETE 58 ROD, REVISE GAR 25 ROD		1-15-75	FM

**ROHN MANUFACTURING**

ANCHOR ROD SCHEDULE

THIS DRAWING IS THE PROPERTY OF ROHN. IT IS NOT TO BE REPRODUCED, COPIED, OR TRACED IN WHOLE OR IN PART WITHOUT THE WRITTEN PERMISSION OF ROHN.

DATE: 3-22-73  
 DRAWN BY: RHB  
 CHECKED BY: RHB  
 PART NO.: C 660415  
 REV. NO.: R10