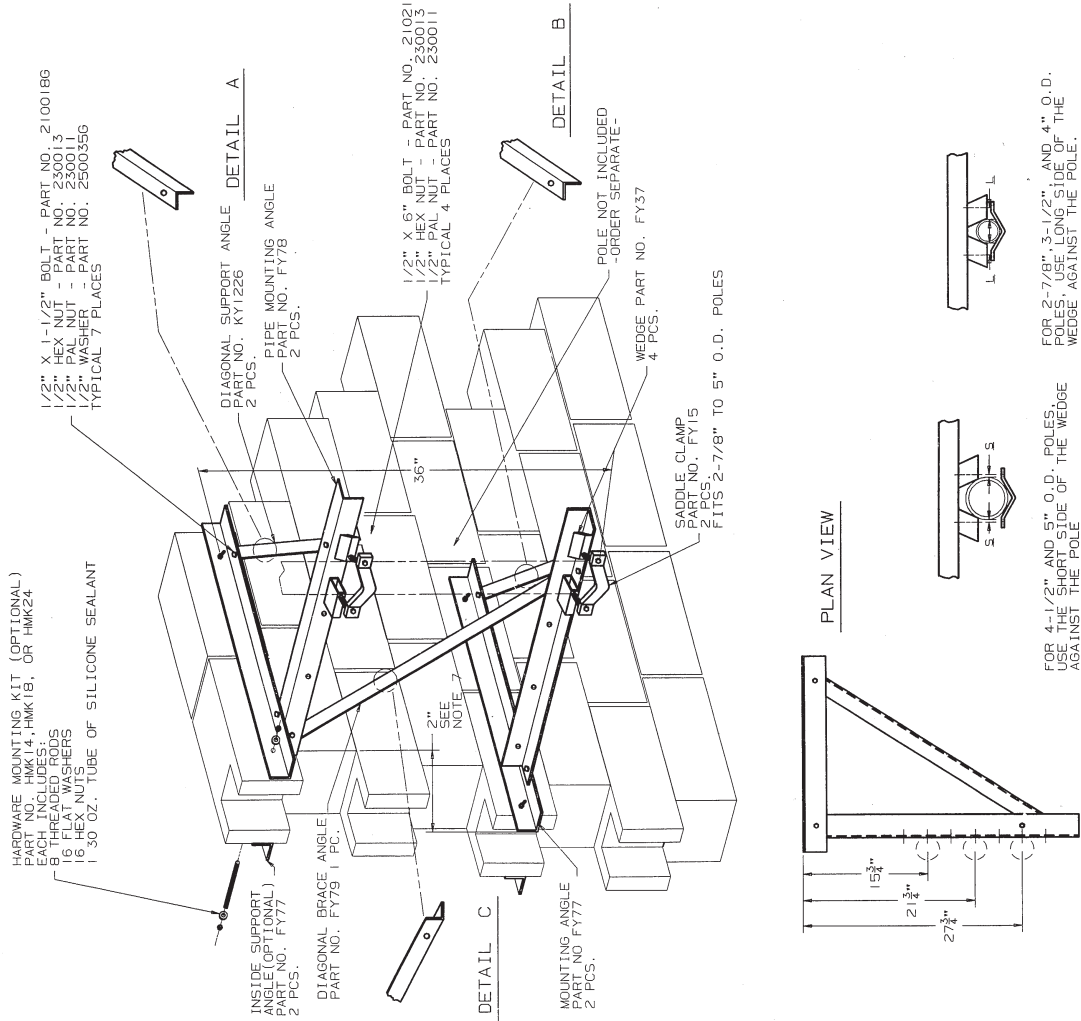




NOTE

1. IT IS THE PURCHASER'S RESPONSIBILITY TO VERIFY THAT HIS INSTALLATION AND BUILDING STRUCTURE ARE ABLE TO WITHSTAND ALL LOADS IMPOSED BY HIS ANTENNA ANTENNA INSTALLATIONS SHOULD BE GROUNDED BY THE INSTALLER TO MEET ALL APPLICABLE CODES.
2. INSPECT THE MOUNT AND ANTENNA EVERY 6 MONTHS.
3. OPTIONAL INSIDE MOUNTING ANGLES MAY BE PURCHASED SEPARATELY FROM ROHN, (PART NOS. : F177)
4. ASSEMBLY SHOWN DOES NOT INCLUDE THE POLE, WHICH MAY BE PURCHASED SEPARATELY FROM ROHN, (PART NO. : F177)
5. IF THE POLE IS TO BE INSTALLED PLUMB, THE LOWER MOUNTING ANGLE SHOULD BE MOVED 2" MORE TO THE LEFT, THAN THE TOP MOUNTING ANGLE, PRIOR TO ATTACHING THE MOUNT TO THE BUILDING.
6. IF THE POLE IS MOUNTED 15-3/4" FROM THE BUILDING, USE THE EXTRA 1/2" X 1-1/2" BOLT ASSEMBLY TO FASTEN THE DIAGONAL BRACE TO THE LOWER MOUNTING ANGLE.
7. BOLTS ARE INCLUDED WITH THE BOLT ASSEMBLIES AND ARE TO BE INSTALLED WITH THE CONCAVE SURFACE AGAINST THE STANDARD NUT.
8. TO OBTAIN MAXIMUM CAPACITY OF THE PWM, BOLTS SHOULD BE TIGHTENED IN ACCORDANCE WITH AISC RECOMMENDATIONS.
9. PARTS SHOULD BE ORDERED AFTER FABRICATION.
10. REFER TO ENGINEERING REPORT 87-02 FOR PWM ENGINEERING DATA.
11. ANGLES MUST BE POSITIONED AS SHOWN IN DETAILS A, B, AND C FOR INSTALLATION.



BILL OF MATERIAL	
QTY	PART NO. DESCRIPTION
2	FY77 MOUNTING ANGLE
2	FY78 PIPE MOUNTING ANGLE
2	KY1226 DIAGONAL SUPPORT ANGLE
1	FY79 DIAGONAL BRACE ANGLE
4	FY37 SADDLE CLAMP
4	FY37 WEDGE CLAMP
1	FY845 HARDWARE KIT

HARDWARE KIT CONTENTS	
QTY	PART NO. DESCRIPTION
8	2100186 1/2" X 1-1/2" BOLT
4	2102136 1/2" X 5/8" BOLT
12	230013 1/2" PAL NUT
12	2500356 1/2" FLAT WASHER

UNR - ROHN
Division of UNR, Inc.

TITLE POLE WALL MOUNT - PWM

DATE 1-18-54

DRAWING NUMBER D850065R8

DESIGNED BY UNR

CHECKED BY UNR

APPROVED BY UNR

DATE 1-18-54

SCALE UNR

PROJECT UNR

FILE NUMBER UNR

UNR - ROHN
DIVISION OF UNR, INC.
1000 W. 10TH ST., SUITE 100
MINNEAPOLIS, MN 55401